



THERE'S A GREAT DAY COMING

TO MR. and MRS. ANCHORAGE and ALASKA
YOU ARE INVITED TO ATTEND THE CEREMONIES
THE OFFICIAL DEDICATION OF ANCHORAGE'S
NEW SEAPORT and CARGO TERMINAL
SATURDAY and SUNDAY, JULY 8th and 9th

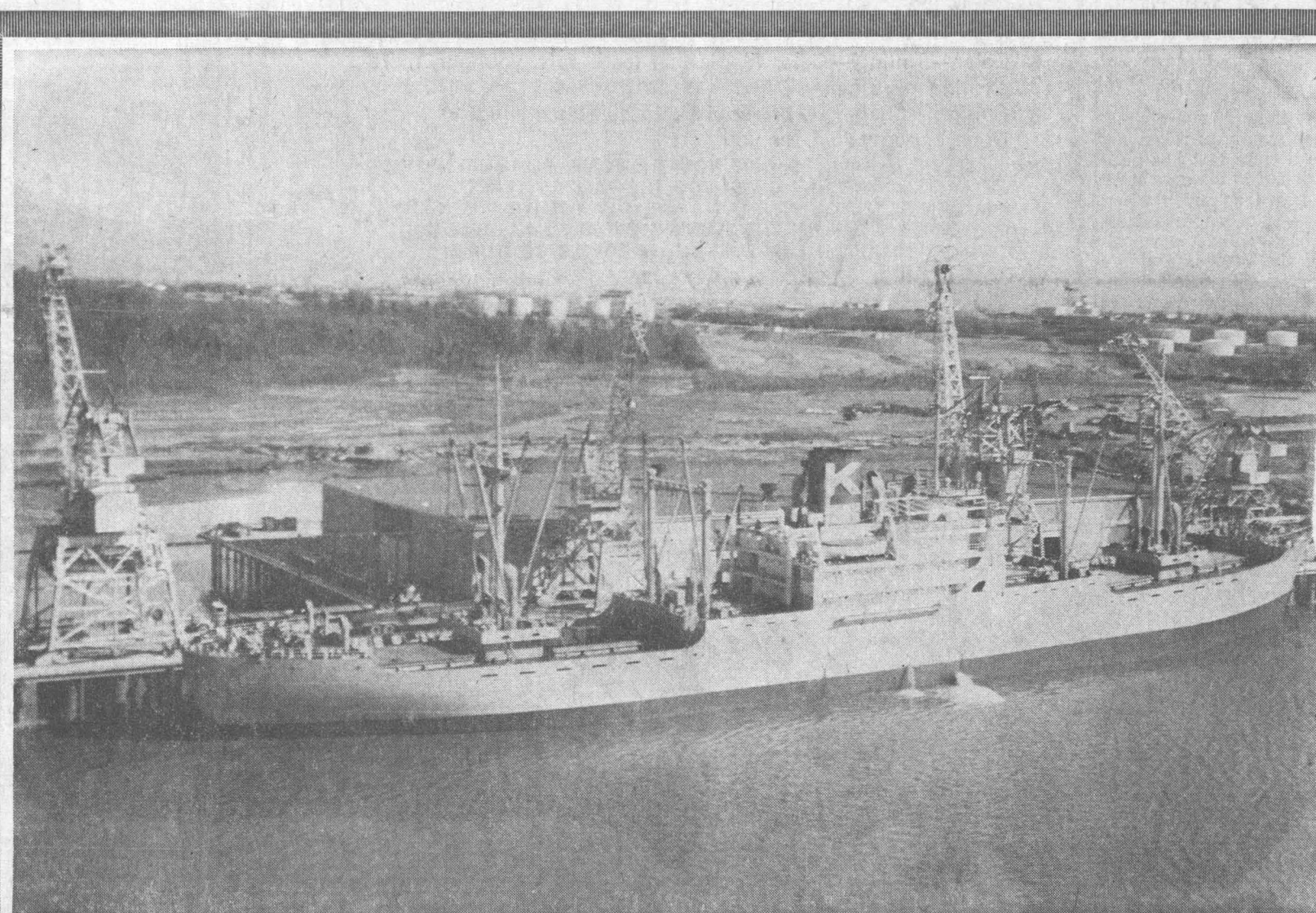
FORMAL DEDICATION CEREMONIES — 11 A.M. SATURDAY
PORT OPEN 10 A.M. BOTH DAYS, SATURDAY AND SUNDAY
OPEN HOUSE BOTH DAYS ABOARD THE COAST GUARD CUTTER SEDGE . . . PORT DOCK

INITIAL PHASES for the port of Anchorage began 7-years ago when the voters of Anchorage authorized \$2,000,000 in general obligation bonds in 1947. During the following year, private engineering and consulting firms were retained to conduct feasibility studies and engineering estimates for the planned port improvement.

IN 1953, \$6,500,000 revenue bonds were authorized and issued for the construction of the new port of Anchorage terminal. Initial construction was started in the fall of 1953, and now, almost 3-years later a new sea port will be dedicated to the Anchorage community.

THE NEW TERMINAL, recognized to be one of the most modern cargo installations on the Pacific coast, has already handled its first cargo from barges and deep water vessels. Scheduled for arrival July 11th, is the USS Mann, a large troop ship. This will mark the first time in the history of Anchorage, that a vessel of this size has been docked along the shores of Kik Arm.

THE NEW TERMINAL is capable of handling almost every ship operating on the commercial sea lanes today. The formal dedication tomorrow will, as the dedication plaque indicates, "commemorate a new era for the citizens of Anchorage upon the opening of the port to international trade via the seas of the world."



THE NEW \$8,200,000 PORT OF ANCHORAGE CARGO TERMINAL

SCHEDULE OF EVENTS

Saturday, July 8th

10:30 A.M.—BAND CONCERT
(5040th AF Band)
USARAL Band

11:00 A.M.—FLAG RAISING
Benediction
Introduction of
Visitors
Guest Speakers
Port Dedication &
Flag Presentation

1 to 4 P.M.—Open House aboard
U.S.C.G. Cutter
Sedge

Sunday, July 9th

1 to 4 P.M.—Open House aboard
U.S.C.G. Cutter
Sedge



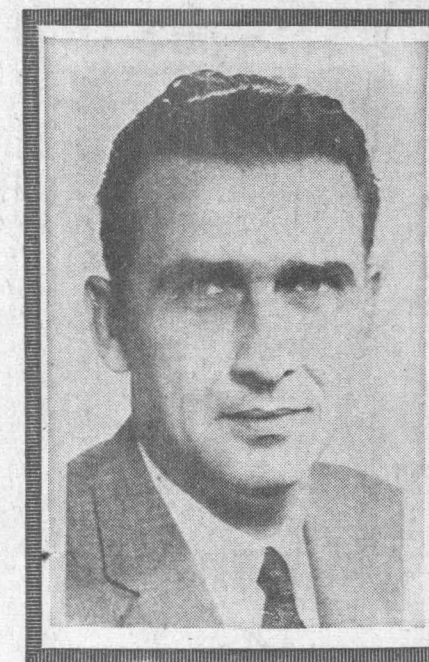
THE MAYOR OF ANCHORAGE
GEORGE BYER



ANCHORAGE CITY MANAGER
CHET HOSTETLER



CHAIRMAN PORT COMMISSION
HAROLD A. STRANDBERG



PORT DIRECTOR
H. HENRY ROLOFF

MEMBERS OF THE ANCHORAGE CITY COUNCIL
W. A. BESSER ROY NIGH GEORGE SHARROCK RON RETTIG
BENNIE LEONARD HARRY PURSELL JOE YESENSKI DR. ROBERT LIVIE



MEMBERS OF THE ANCHORAGE PORT COMMISSION
LYLE ANDERSON JACK FERGUSON
ROD JOHNSTON C. R. FOSS