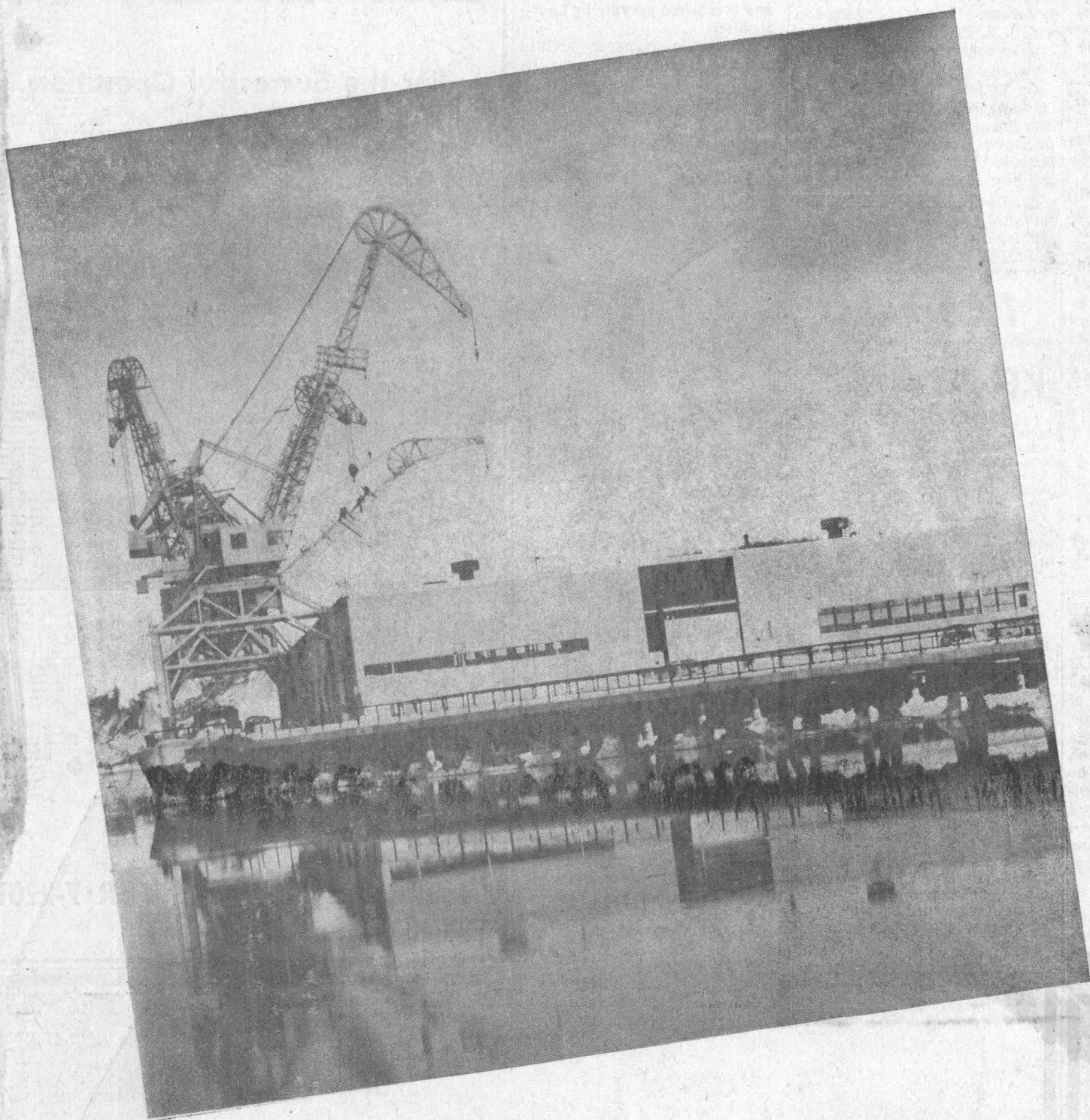


Setting a New Era in the Economy of Greater Anchorage



By the dedication today of its Dock facilities, Anchorage takes its place among World Ports, rightfully and at long last, stimulating the flow of commerce so vital to the economy of not only the Greater Anchorage Area but the state at large.

We who had a part in finalizing this major project, salute the many citizens who, over the past 15 years, have assisted in its planning and have given impetus to its completion.



GEORGE H. BYER
MAYOR



C. A. HOSTETLER
CITY MANAGER

COUNCILMEN



ROY V. NIGH



W. A. BESSER



BENNIE LEONARD



JOS. A. YESENSKI



GEORGE SHARROCK



HARRY PURSELL



ROBT. D. LIVIE



RON L. RETTIG

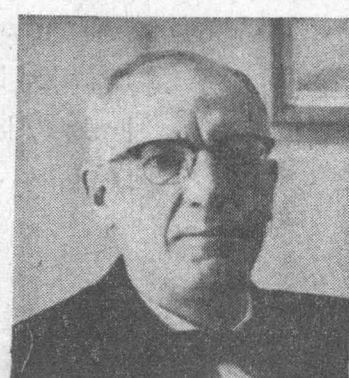
PORT COMMISSION



HENRY ROLOFF
PORT DIRECTOR



HAROLD STRANDBERG
CHAIRMAN



ROD JOHNSTON



C. R. FOSS



JACK FERGUSON



LYLE ANDERSON

CITY and PORT ADMINISTRATORS
OF THE
CITY of ANCHORAGE