

CURIOUS SOLDIERS, SAILORS CROWD RAIL

As the "USS Mann" berthed at the new municipal port yesterday, soldiers and crewmen lined the rail of the main deck to get a better look at Anchorage

and the crowd of several hundred people who showed up to greet the troop-carrying vessel.

'Surprise Party' Greets Transport On Arrival At Port Of Anchorage

A reception party of several hundred people was at the city dock yesterday to greet the 621 passengers arriving on the "USS Mann," the first huge military transport to use Anchorage's new port facilities.

Guided smoothly into port, the ship was being tied up at the dock before many of the

on-lookers realized that the "ship was in." Just as surprised were the ship's passengers who admitted they were "flabbergasted" by the huge reception. Caught with her hair up, the first person off the ship, Mrs. James E. Godsey, commented, "I would be the first one. And I'm dressed like this."

MRS. GODSEY, her husband, a captain who will be stationed with the U.S. Army Engineer District, Alaska, and their two children, Crawford, 11, and Ellen, 7, were the first passengers to leave the ship.

Col. Robert H. Safford, chief of staff, U.S. Army, Alaska, representing commanding general, Maj. Gen. J. T. Michaelis, greeted all passengers as they came down the gangplank. Senior officer on board was Col. Allen Baker, the new USARAL engineer, who arrived with his wife and three children.

As one member of the welcoming party noted, "The only people making noise were the band (the 214th U.S. Army band) and the small kids."

Some of the 217 cabin passengers eating dinner as the ship docked continued to dine leisurely before debarking.

WITHIN A half hour of the ship's 5 p.m. docking, the baggage of all 317 troops was cleared easily because of the large amount of covered space at the dock. Some rain fell as the ship arrived.

Military families, all Army with the exception of one Air Force, were met by their sponsors who helped them gather up their baggage, provided transportation and either took them out to dinner or arranged for their dinners. Quarters for the new arrivals, who will be in Alaska from two to three years, were also arranged by the sponsors.

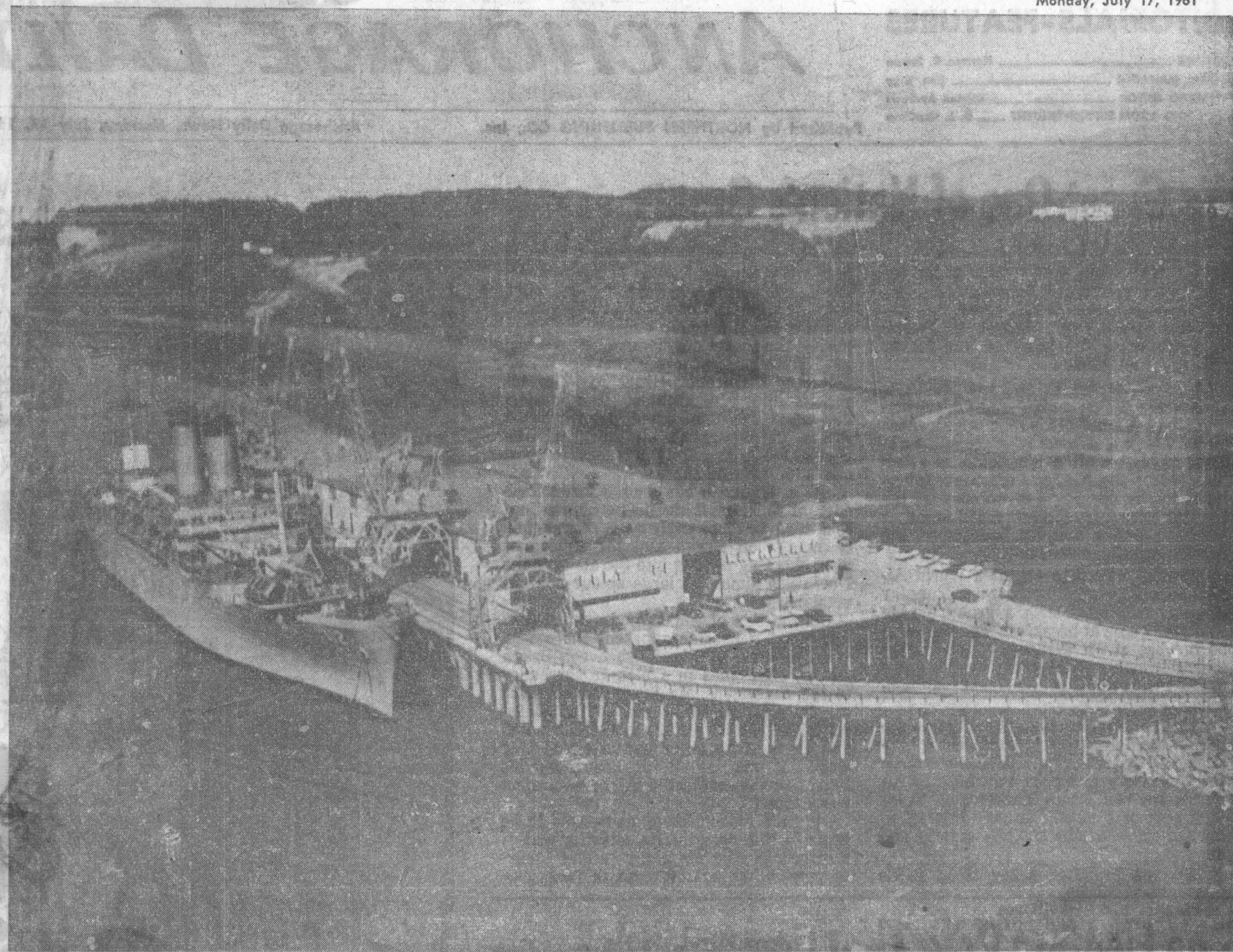
Three Air Force buses were at the port to take in hand 75 Sea Cadets and their 10 counselors who arrived on the ship. The youths, who were dressed in civilian clothes, are from the 8th, 9th, 11th, 12th, and 13th Navy Districts.

THE CADETS were taken on a tour of the city last night and this morning visited Portage Glacier and Alyeska ski resort. They will depart with the ship again today.

The "Mann," the only transport scheduled to arrive here this year, was released early this afternoon with 450 military personnel and their dependents leaving Alaska. Departure time was to be about 4 p.m.

Senior Army officers on the ship's journey south will be Col. Nathan S. Mathewson, former post commander of Ft. Greely, and USARAL assistant dental surgeon, Col. Walter J. Powers.

The "Mann" is to dock in San Francisco, July 17.



PORT OF ANCHORAGE is shown above as viewed from the air when the USS Mann was docked last week. The Mann brought 500 passengers and took away just as many and brought about the busiest days yet experienced at

the new port, which was dedicated only a week ago. The photograph was taken by Arctic studio, and the photo was brought to the Daily News courtesy of International Helicopters.

Transport Leaves City

Military Personnel, Families On Board

No problems were encountered by the "USS Mann" as it sailed out of the port of Anchorage at 5:45 p.m. yesterday on its five-day trip south to San Francisco.

The huge military transport ship which arrived here Tuesday afternoon was the first of its type to use Anchorage's new port facilities.

Going south on the ship are 329 cabin-class passengers, military families and senior officers traveling alone, and 428 troop-class passengers. The ship brought 621 passengers north.

Three senior officers are among the passengers. They are Col. Willard Pearson, G-3, operations and training officer, U. S. Army, Alaska, chief of staff; Col. Nathan S. Mathewson, former post commander of Ft. Greely, and Col. Walter J. Powers, USARAL assignment dental surgeon.

The "Mann" will dock in San Francisco Monday.

Port Loses City Pipe Shipment

Direct loss of \$4,357.62 by the City of Anchorage on a recent shipment of cast iron pipe is estimated by Port Director Henry Roloff in a memo to the city council. Total loss, Roloff says, was closer to \$10,000.

ROLOFF'S statement is the result of a question at last week's city council meeting concerning the pipe. Mayor George Byer asked the city manager why the several carloads of cast iron pipe had not been routed through the city's port facilities instead of through Seward.

City policy, according to City Manager C. A. Hostetter, has called for the lowest bid on items as delivered at Anchorage. He said that since no direct shipments are yet scheduled to the port from California, origin of this particular shipment, the San Francisco-Seward route had been used by the shipper.

FOLLOWING THE discussion, the city council asked for a recommendation from port officials and the city manager on a solution to the problem.

Roloff reports that private citizens also brought the matter to his attention. "Briefly," it is suggested, Roloff's report reads, "that on all purchases weighing in excess of five (5) tons per shipment, the buying agency be required to incorporate, as part of its bid prices, the following figures."

THOSE FIGURES are for (1) price of product FOB factory; (2) price of product FOB Seattle; and (3) price of product FOB Anchorage.

It will then be the task of the traffic division of the Port of Anchorage, Roloff suggests, to analyze the various prices involved "and if a cheaper method of transport from point of origin to Anchorage can be determined, the City of Anchorage can then avail itself of either of the two alternatives, i.e., FOB factory or FOB Seattle."

"In addition thereto, the division can recommend the method of transport from Seattle to the City of Anchorage," Roloff says.

THE ACTUAL cost was \$3.58 per hundred pounds for a total of \$29,500.06. Port of Anchorage cost would have been \$2.99½ per hundred or \$24,642.44, Roloff says.

ARMY SHIP TO DEBARK 400 HERE ON TUESDAY

A U.S. Army band will greet the "USS Mann" when the huge transport ship docks at Anchorage's new port tomorrow afternoon to debark military men and families for two and three years of service at Ft. Richardson.

This is the first passenger ship to use the new multi-million dollar port facilities which were dedicated Saturday.

THE TRANSPORT ship will arrive here on a high tide at about 5 p.m. with more than 400 military personnel, 220 of them single men. It will depart from here Wednesday afternoon with rotating Ft. Richardson men and dependents.

The band will begin playing at 4:30 p.m. to greet the "Mann," reported to be the largest ship to ever dock in Anchorage. It is 75 feet wide and 622 feet long, or the length of two football fields laid end to end.

The ship is from San Francisco and will return to that city when it leaves here. This is only the second time that military families have been brought to Anchorage by ship.

In 1956 military men were brought here to join the second division at Fort Richardson. The ship which carried them did not dock and smaller boats "lightered" the personnel to land.

The "Mann," which is equipped to carry 2,000 troops, is loaded with the baggage and automobiles owned by the rotating families. Buses and Ft. Richardson personnel will greet the families and will shuttle them to Fort Richardson.

The "Mann" was built in 1943 and during World War II carried troops in both the At-

Huge Barge Slated Here

New Zealand, Japan Ships To Dock Too

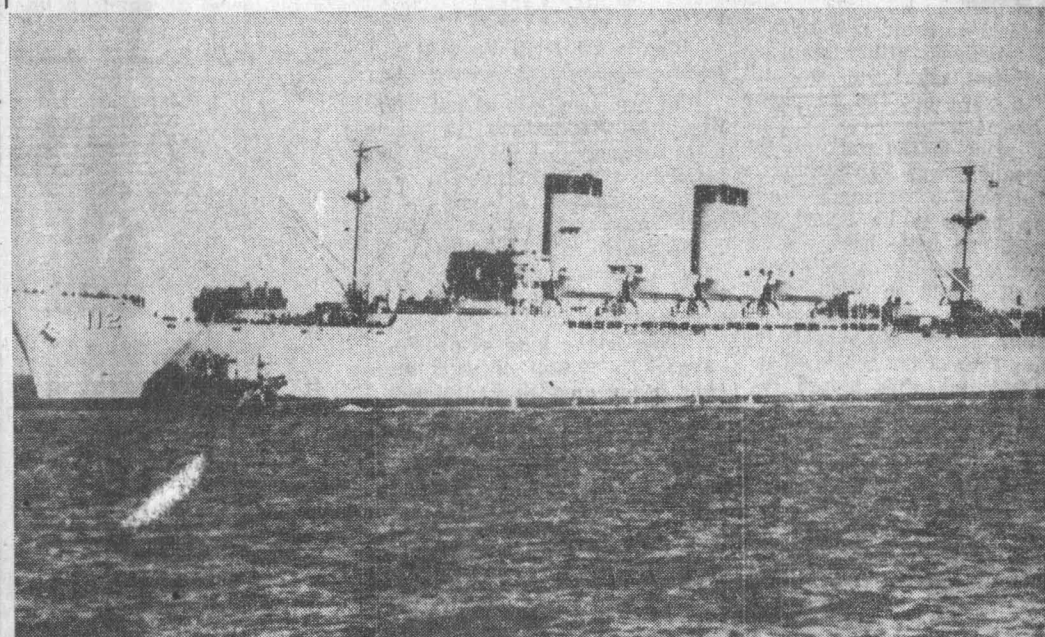
A barge believed to be the largest in the world and ships from New Zealand and Japan are scheduled to unload cargos at the port of Anchorage next week, the port said. Alaska Barge and Transport Co., will unload 500 tons of military construction equipment from Dutch Harbor Tuesday, it was reported. The barge is said to be more than 300 feet long, of wide beam and to be equipped with three stationary cranes. It services Dew-Line points on the Alaskan Coast.

The refrigerated ship "Argentinian Reefer," from Auckland, New Zealand, will unload 200 tons of cargo. Reports are that it is refrigerated meat but the port refused to confirm this.

The Japanese ship, "Kazukawa Maru," out of Yokohama, also is expected to dock Tuesday with 200 tons of general cargo. It will load about 250 tons here.

Also, tonight, two Northland Freight Lines barges will unload about 1,000 tons of general cargo, the port said.

Dependents Arrive Today



FIRST TROOP TRANSPORT—The USS Mann, first troop transport of the Military Sea Transportation Service to dock at the new Port of Anchorage facility, is scheduled to arrive today at 5 p.m., with approximately 550 military personnel and dependents on board. The Mann is scheduled to depart

Anchorage for San Francisco, Calif., at 5 p.m., Wednesday, July 12, with more than 850 Alaskan command Army, Navy, Air Force personnel and dependents from various military installations in Alaska. Captain of the MSTs vessel is Capt. M. J. Smith, USN.

Landing Ship To Use Port

Military Vessel Has 2,100 Ton Cargo

The first landing ship to dock at the port of Anchorage is due to arrive Wednesday, the port reported.

The LST Harris County will unload 2,100 tons of personal and military vehicles, steel, tractor parts, personal baggage and general post exchange merchandise for the military installations, port officials said.

IT IS scheduled to return to its port of origin, Seattle, Aug. 6, loaded with about 200 tons of military personnel, vehicles and personal baggage.

In other Anchorage shipping news, unloading today at Anderson Dock are the Tug Charles and two barges with 1,900 tons of general cargo for Alaska Freight Lines.

The freight line said it expects the Tug Martin and a barge Sunday. Tonage and cargo are not known.

The tanker, Mormac Fuel, is unloading military fuels at the Army Dock.

Big Tractor Lands In Alaska Via Port

Premier H and K Constructors, Inc., recently shipped what it claimed is the largest tracked tractor in Alaska via the port of Anchorage for an airport construction project at King Salmon, port officials announced.

Two barges towed by Foss Launch and Tug Co. from Seattle docked at the port to take on additional construction equipment for the \$750,000 Corps of Engineers project, the port reported.

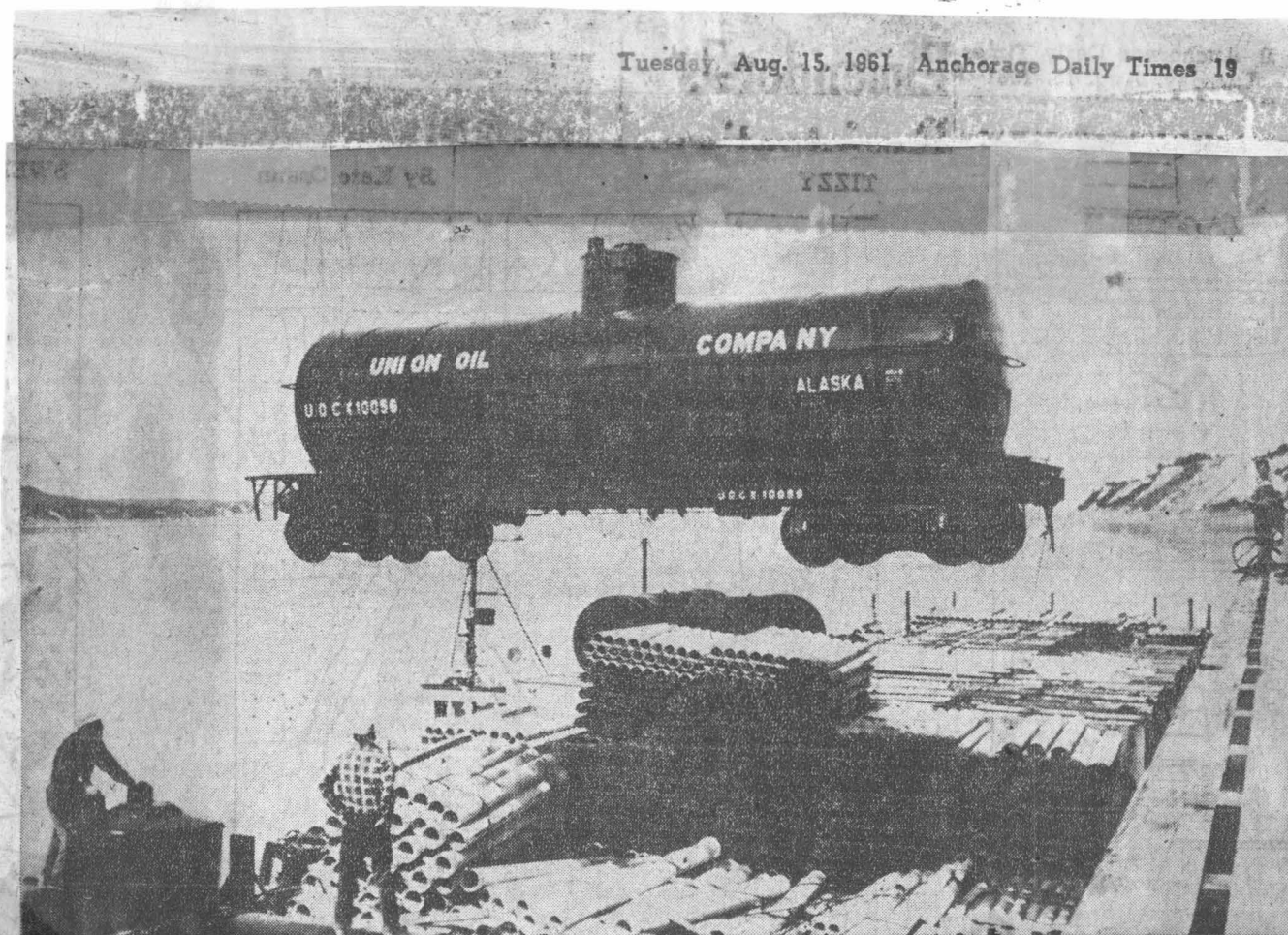
Put aboard was an Euclid TC-12 bulldozer, weighing 55 tons. Uniquely, the tractor is

made in two sections, with two engines which drive the tracks independently.

THE TRACTOR is joined by a single six-inch diameter pin, allowing the tracks to adjust to ground pitch separately. The operator rides one of the halves.

One of the port's 40-ton gantry cranes swung the monster onto the barge without strain, the port said.

The runway lengthening project for the Air Force at King Salmon is due for completion during August, 1962, the contractor said.



HIGH IRON

This 24,000-pound railroad tank car is lifted by gantry crane from a Northland Freight Lines barge onto the deck at the port of Anchorage. The car, consigned to the Union Oil Co. of Calif. for the Whittier Railbelt fuel supply operation, is one of

five unloaded yesterday. On the deck of the barge can be seen asbestos-cement sewer pipe, part of which was damaged in a Gulf of Alaska storm. The pipe is bound for the Spenard Public Utility district's sewer project.