

## Four Vessels To Dock Here

Four large vessels, two of them military, are scheduled to call at the Anchorage city dock in the next two months. One will make two calls here.

The African Reefer is scheduled to arrive here next Monday from Auckland, N.Z., and deliver a 250-ton cargo of meat.

It will be followed on May 26 by the USS Carratuck, a Navy seaplane tender. The

Navy ship will call here to give the crew a shore leave following maneuvers in the Pacific.

On Wednesday, the Kazuka Maru is scheduled to make one of two calls here this summer. It will come here from Yokohama. It will return again on July 10.

On July 11 the USS Mann will arrive to discharge and take on military personnel and their dependents.

## To Visit Anchorage June 2-3



THE NAVY'S MOST modern, large seaplane tender, the USS Currituck (AV-7), shown above, will visit Anchorage June 2-3. The 540-foot tender will be berthed at the city dock and will be open for public visiting Sunday, June 3, from 1 to 4 p.m. The San Diego-based Currituck, commanded by Capt. R. W. Windsor Jr., USN (at right), has been conducting advance-base seaplane operations in the Kodiak and Alaska peninsula area. The large tender carries a crew of 550 officers and men. It is comparable to a floating air station, capable of independently supporting aircraft squadrons operating from bays and inlets worldwide. (U.S. Navy photo)

## Roloff Says Port Has Land For Development

The Port of Anchorage has approximately 90 acres of land which could be developed for industrial purposes, Henry Roloff, port director, informed the Greater Anchorage Chamber of Commerce board this morning.

nearly 28 acres of land adjacent to, and directly east of the present port facilities.

The land was released by the Air Force then selected by the state of Alaska, under the Mental Health Act, following statehood.

The state has appraised the land at \$243,000, according to a report given at yesterday's port commission meeting.

However, in negotiation the state has offered it to the commission for 30 per cent of appraised value. The commission has held for five per cent, it was reported.

Port manager Henry Roloff says the Air Force released the land, and the state was to act only as a vehicle of transfer, under an agreement between the three agencies prior to statehood. The state appraisal of the land is high only because the land borders our new port facilities, Roloff said.

"THE PORT HAS the only block of acreage that could be devoted to industrial development in the city," he commented.

Roloff said development of the land, which is located behind the port dock, would be an ideal project for the Chamber to promote. He said industrial development is a traditional Chamber function.

The port director added the acreage will require about \$10,000 worth of improvement per acre because it is swampy and has a muskeg cover.

He did not see this as a problem and said the improvements could be made by two methods. One would be to have the lessee pay for the improvements and the other includes the use of Area Redevelopment administration funds obtained either as a grant or a long term loan. He said port development is the number one project on the area's ARA list.

ROLOFF BRIEFLY discussed Shell Oil company's tank farm, which is being constructed on another 10 acres in the port area. Shell has leased 10 acres from the port for the \$2 million project. The lease covers 40 years and Shell is presently paying \$12,000 a year for the use of the land. The company is also doing its own fill work.

A representative of the Cook Inlet and Kenai Peninsula Setnetters association requested the Chamber board to help the two groups obtain property rights to fishing locations.

ALEX SHADURA told the board that the setnetters have no right to their fishing sites at (Continued on Page 2)

## Port Fire Call



ALLEY OOP! — Lt. George Dodd of the Anchorage fire department is raised by a cargo crane onto the city dock from a fishing vessel. The fire department responded to a call aboard the "Invincible," a 70-foot craft at 11:39 a.m. yesterday. The fire started by a spark from an arc welder in the hold was put out by the boat's crew before it did any damage. (Daily News photo)

## Ship Open House Attracts 2,500

Some 2,500 persons from Anchorage visited the U.S.S. Currituck Sunday after standing in long lines to board the Navy seaplane tender at the city dock. Many turned back without going aboard, discouraged by the long lines and cold weather.

Visitors parked their cars on both sides of Ocean Dock road, almost as far away from the dock as Bluff road, making a steady stream to the ship during the open house hours from 1-4 p.m. Hundreds were still in line when the ship's officials had to call an end to the visits so that the duty crew could be fed aboard ship.

Saturday's visitor turnout was much smaller.

Members of the ship's crew enjoyed a holiday in Anchorage, and many families and service organizations entertained them at dinner. Most of them went shopping in downtown Anchorage on Saturday.



CAKE AND SAILORS go well together as members of the Elmendorf Noncommissioned Officers' Wives club discovered yesterday when they served 45 cakes at the USO club at a cake buffet the women sponsor there every other month with Mrs. Robert Gillespie as chairman. The men around the table are Robert Roberts, S.A.; John Pettigrew, S.N.; Bob Plocinski, S.N.; and Jim Clark, S.N. The first three were ashore from the U.S.S. Currituck which docked at the Port of Anchorage this weekend. Clark was here from his station in Adak. Serving, at left, is Mrs. Gene S. Fairly and right, Mrs. Herman Lackey. Also helping but not pictured was Mrs. Eddie Jones. (photo by Gaspar)

## Oil Industry Vessels Use City's Port

A total of 14 vessels working for the oil industry in Cook Inlet are currently operating from the municipal dock and others are working from a private dock.

The vessels, ranging from the 50-foot Sea Horse to the 170-foot Barge 192, are both owned by Foss Launch and Tug Co. Inc. and working for Pan American Petroleum Corp. They are supporting seismic and drilling explorations in the inlet.

At the end of April, 1,400 tons of freight had moved across the dock for the oil industry and it is estimated a total of 10,000 tons of such material will be handled before the end of the season, port officials said.

In terms of gross port revenue, this could mean as much as \$30,000.

MORE IMPORTANT, it is estimated the activity will pour several times that amount of money into the local economy in the form of subsidiary services and local purchases plus the expenditures of crews who spend their off-duty time in Anchorage.

One of the more unusual items required by the vessels supporting the drilling rigs is a vast quantity of water. The port has been supplying an average of 50,000 gallons of fresh water a day to the boats. It has been estimated that up to 160,000 gallons a day will be required as drilling increases but it is not yet known whether it will all be obtained at the dock.

Most of the fresh water is used in the drilling fluid.

## Sewer Work Is Started

Under-Port Military Line To Be Longer

Construction is scheduled to begin today on a 450-foot extension of the sewer line from Elmendorf Air Force Base now discharging under the city's dock.

The line will be extended below low water so that the discharge will be under water at all times. Cost to the city is \$60,000 and money will come from the port construction fund.

Public Works Director Robert Smith said the work has been scheduled to take advantage of low tides within the next few days.

Efforts to interest the Alaska Air Command in footing part of the bill for extending the line have failed. The sewer serves Elmendorf Air Force Base exclusively.

It discharges at present on the beach under the port of Anchorage dock. Damage to the port dock and the health hazard existing in this method of disposing of sewage are reasons for extending the line, Smith said.

Cheney Construction Co. is the contractor.

## City Port To Handle Oil Tanker

The first petroleum tanker to dock at the port of Anchorage in its two-year history is scheduled to arrive the first week in September, a port spokesman said today.

THE M. S. HOEGH SKEAN of Netherlands registry will unload 133,000 barrels of airplane jet turbine fuel for the Shell Oil Co. new tank farm in the port area, it was said.

The tanker will rack up two more firsts, the spokesman said. The shipment marks the first to be received by the 365,000 barrel Shell tank farm which is nearing completion on port land. The cargo is also the first to be shipped from South America. It comes from Venezuela, he said.

Another Shell tanker is anticipated in October and a third before the end of the year, the spokesman said.

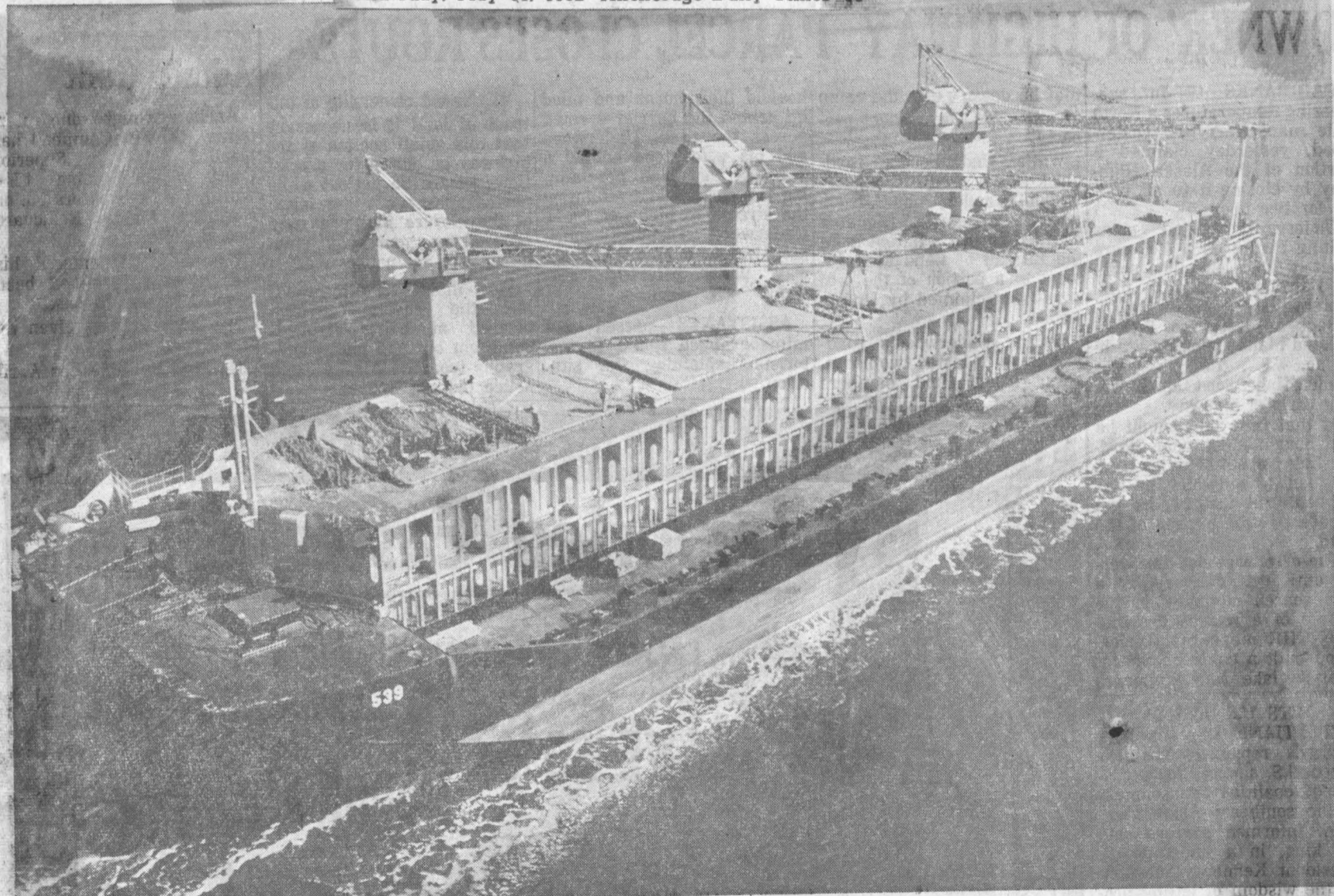
THE CITY PORT will realize about \$8,000 in revenue on the shipment, the port official said. The municipal facility realizes 6 cents a barrel plus crane fees on petroleum cargoes.

During the month of July 128 vessels berthed at the city dock and 5,114 tons was handled, the port's monthly report shows. The port's month was from June 25 to July 31.

Of the total number, 96 were oil exploration vessels; two were government; 15 were tugs and 15 barges.

Tonnage to July 31 reached 25,061 compared with 9,223 tons to the date last year.

In the port developments, an after port hours telephone is to be installed at the southwest corner of the transit shed Aug. 21. It will be a direct line to a city operator who will call emergency vehicles, taxicabs or relay messages to port personnel.



World's Largest Barge To Dock Here

## Barge 539 Will Use Port Of Anchorage

What is reputed to be the world's largest general cargo barge is scheduled to pull alongside the Port of Anchorage dock here tomorrow.

The vessel, known simply as Barge No. 539, is hauling approximately 600 tons of construction equipment owned by the Swalling Construction Co.

from Adak to Anchorage. Max Peabody, manager of the Anchorage office of Alaska Barge and Transport, Inc., said No. 539 is the "largest general cargo barge in the world."

He listed the dimensions as 299 feet long, 75 feet wide, with a combined capacity for hauling 3,075,000 gallons. The barge has 32 cargo tanks carrying 170,000 cubic feet of dry cargo. In ocean service, it can carry five million board feet of lumber. It can carry Bullock, longshoreman and riverboat operator.

Barge No. 539 visited Anchorage once before, in October of 1961.

The Alaska Barge and Transport, Inc., is an affiliate of the Pacific Northwest Navigation Co., Inc., of Seattle, Wash.

1.78