

DAYLIGHT

19 hours 15 minutes
Sunrise 2:25 a.m.
Sunset 9:40 p.m.

Anchorage Daily Times

47TH YEAR — 24 PAGES

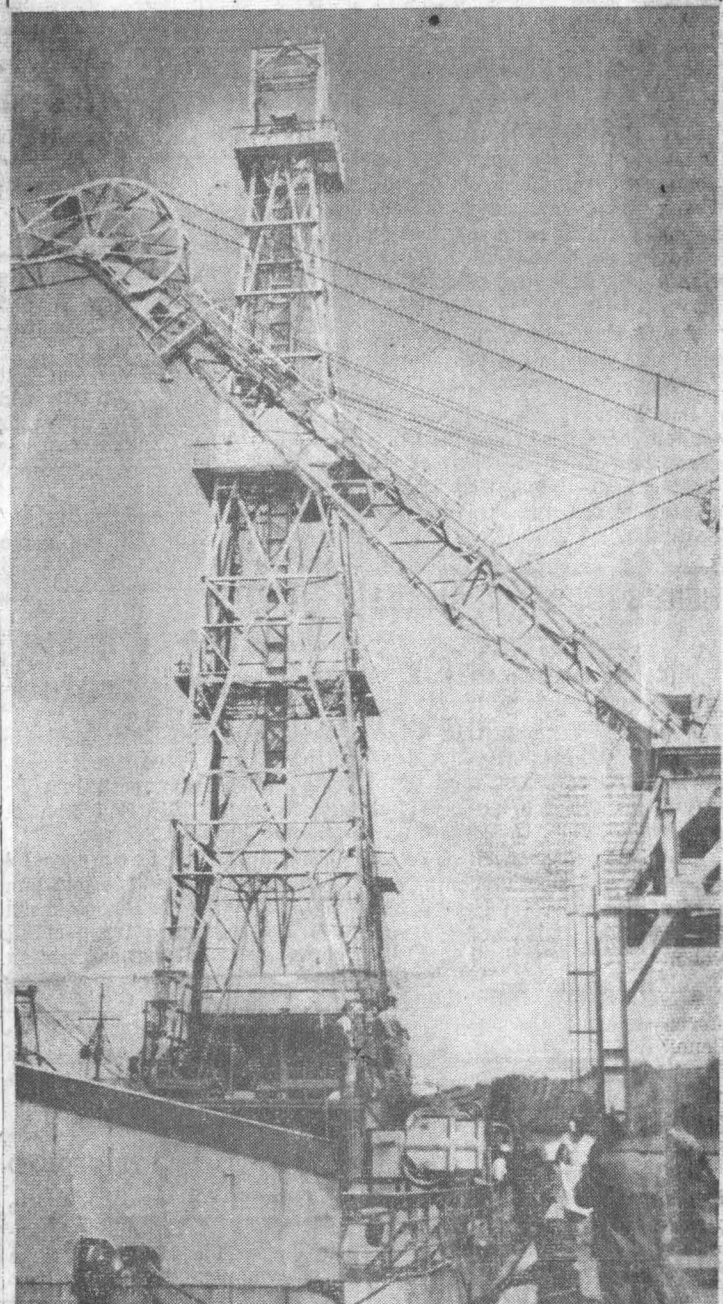
ANCHORAGE, ALASKA, FRIDAY, JUNE 29, 1962

TOMORROW'S FORECAST

Sunny.
High Temperature 70
Low tonight 46

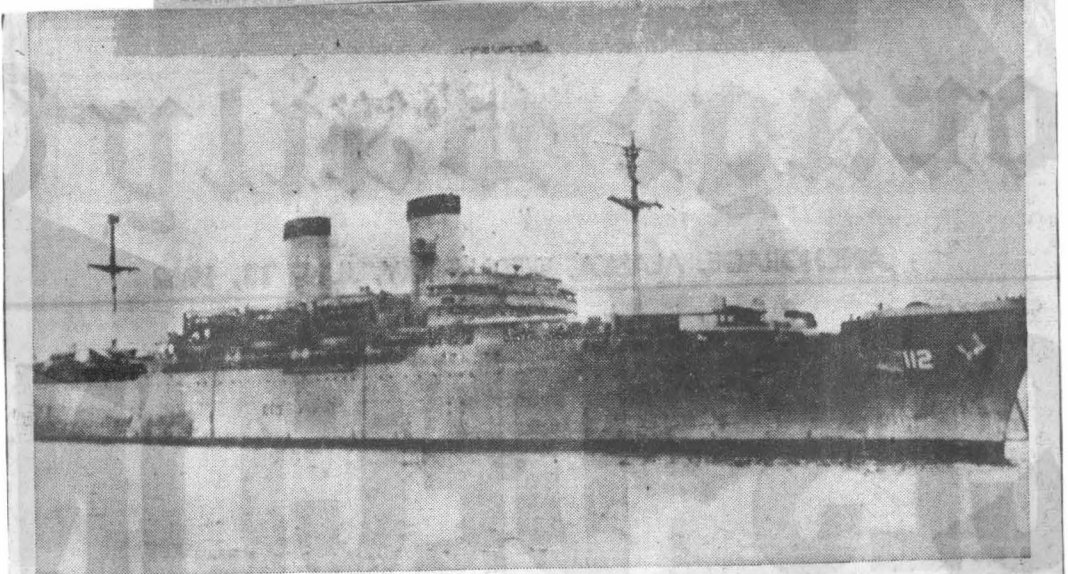
ROLOFF GIVEN TOP STATE POST

Drilling Barge Docks At Port



PAN AMERICAN PETROLEUM corporation's huge new drilling barge docked at the Port of Anchorage this morning after a brief stop at Homer. The barge was specially constructed by Western Offshore Drilling company for Pan American's use in the Cook Inlet exploratory drilling operation. It will remain here two days to unload material and then sail to the West Forelands area of the inlet to begin drilling on Pan American's lease site. The barge will be the second one brought to the inlet by the oil company. Shell Oil company is also drilling in the inlet. (Daily News photo)

Anchorage Daily Times Wednesday, June 13, 1962



U.S.S. Mann To Return

LARGEST VESSEL WILL MAKE RETURN VISIT

The U.S.S. Mann, the largest vessel ever to visit the Port of Anchorage, is scheduled for a return visit next month, it was learned here today. The 630-foot long personnel transport is scheduled to leave San Francisco on July 6 and arrive in Anchorage July 11. Aboard the vessel will be, in addition to military troops and dependents, a contingent of 40 Navy League sea cadets and five counselors. Jack Anderson, president of the Alaska chapter of the Navy League, said he was advised of the sea cadet visit by a Navy League vice president, Morgan L. Fitch Jr. Fitch said this year's visit by the cadets is the result of the "outstanding performance" by the city of Anchorage in receiving the cadets on their tour last year. The U.S.S. Mann will bring military troops and dependents to Anchorage and, on the

return trip to San Francisco, will carry troops and dependents leaving here on rotation for new assignments. The vessel last year brought in 621 servicemen and dependents, 44 automobiles and seven tons of baggage. Outbound were 757 personnel, 51 automobiles and ten tons of baggage.

Japanese Ship Personnel Given a Tour of Anchorage

By JAMES BARNER

"Your Mt. McKinley looks like our Fujiyama," said Captain Akiyama as he pointed to the mountain visible in the distance from Port of Anchorage. HE LEANED BACK in his chair in the paneled dining room of the ship, the Japanese freighter Kasukawa Maru. Sounds from the dock activity came through the open windows. The crew was playing baseball on the dock, dodging among the piles of ropes, cables, piles of boxes; tractors dodged around the ball players, hauling off the cargo of cement, steel pipe and assorted building materials the ship had carried from Kobe. "The men like baseball very much," the captain explained. "The leading team in Japan now is the Central League's Yamurai Giants. I'm a fan of the Pacific League Hawks though. They're in last place." Capt. Akiyama was talking with M/Sgt. and Mrs. Shelby



NAUTICAL NAVIGATION is explained by Captain K. Akiyama on board the Japanese freighter Kasukawa Maru. Visiting the ship while it docked at Port of Anchorage are Master Sergeant and Mrs. Shelby Loving and their son, Bill, of Fort Richardson. After the ship tour, the Lovings took Captain Akiyama and part of his crew on a tour of Anchorage and Portage Glacier. (U.S. Army photo)

First Shipment Of Fuel Slated

First shipment of fuel to Shell Oil Company's new tank farm in the Port of Anchorage area is expected late this month or early next.

Port officials said a Shell tanker, with a cargo of jet fuel estimated at between 70,000 and 100,000 gallons, is due in at the Port of Anchorage dock.

Loving, Sgt. Loving, is administrative noncommissioned officer for U.S. Army, Alaska support command's petroleum distribution division. He and his Japanese-born wife, Fu-Mei, met the Kasukawa Maru when it was in Anchorage a year ago, and again last week.

THEIR KINDNESS of a year ago had not been forgotten by the Japanese. Although this was the first trip Capt. Akiyama had made as captain of the ship, crew members had told them of the sight seeing trip the Lovings had taken them on a year ago.

Capt. Akiyama suggested taking the Lovings on a tour of the ship. "You know," he said, "I feel as though I were the godfather of the Kasukawa Maru." He paused to turn on the radar so 7-year-old Bill Loving could see how it outlined the harbor. "When the ship was built 10 years ago there was a national contest to name her. I was one of the nearly 50 who suggested 'Kasukawa Maru.' We all won a prize. I didn't dream then that I would someday be her captain."

After the ship tour, the Lovings took the captain and several of his crew to see the Anchorage area. The ship doctor started with the group but stopped at the Alaska Native Service hospital. He is engaged in research on infectious hepatitis and wanted to compare his findings with the research of Alaskan doctors.

The Japanese visitors were especially impressed with Portage Glacier, and the ruggedness of surrounding mountains. They said the land looked very empty in comparison with the crowded villages and fields of Japan.

Sgt. Loving was stationed in the Far East for seven years. His wife and their two sons, Bill, 7, and Wm., 13, were born in the Chinese section of Yokohama.

Originally from Bogalusa, La., Sgt. Loving hopes to return to Japan soon. "Once you go there," he said, "you always want to return."

The Kasukawa Maru is continuing down the Pacific coast to California ports to pick up cargo bound for Japan. It is scheduled to return to Anchorage sometime in July. The Lovings plan to be on hand again to extend their hospitality to the visitors.

"After all," explained Sgt. Loving, "after nearly two weeks at sea a sailor wants to see land, lots and lots of land. It's difficult for a stranger to see much more than the dock area. Fu-Mei and I try to help."

Port Director Heads Economic, Planning Dept.

Gov. William A. Egan announced at an airport press conference here today that he has appointed Anchorage port director Henry Roloff as commissioner of Economic Development and Planning.

Roloff's appointment to the \$17,000-a-year cabinet post becomes effective Aug. 1, a day after his resignation as port director takes effect.

As port director, Roloff has a salary of \$16,500 a year. "We're very fortunate that he has accepted the position," said Egan of Roloff, who stood with the governor at the press conference.

COMMERCE Commissioner A. H. Romick will be acting commissioner of the new department from July 1, when it will come into existence, until Roloff assumes his new post, Egan said.

The governor and Mrs. Egan flew into Anchorage in a single engine light plane from Fairbanks and departed a short time later by commercial airliner for Hershey, Pa., to attend the national governors conference.

Roloff, 43, said of the city port he has managed since its completion, "It's a matter of only a year or two before it reaches its potential. We still need common carriers out of Seattle."

HE SAID HE had submitted his resignation in writing to Anchorage Port Commission chairman Harold Strandberg and had informed city officials of his intention to leave July 31.

Roloff said no successor has yet been chosen for his post.

Roloff came to Anchorage from San Diego, Calif., to become port director in January 1960. In San Diego he had been assistant port director. Prior to joining that post's staff, he was director of industrial development and public relations for the San Diego Chamber of Commerce. He is also a former newsmen for Scripps-Howard newspapers.

The new commissioner is married and the father of six children.



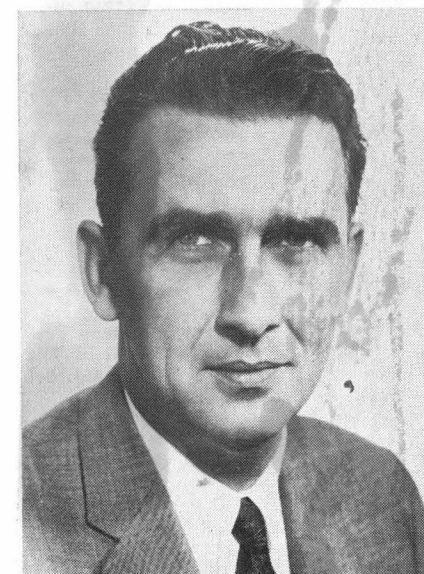
HENRY ROLOFF
New Commissioner Has 9-Point Program

Anchorage Port Director Henry Roloff, who has been appointed the new commissioner of the State Economic Development and Planning Department, today laid down a nine-point program which he hopes to implement upon taking office.

Roloff, who becomes the youngest member of Gov. William Egan's cabinet, recited these points as his main objectives:

1. Expansion of Alaska's natural industries, such as mining, fishing, logging, stock raising and agriculture.
2. Development and promotion of tourism and the expansion of tourist facilities.
3. Promotion and development of air, sea and land transportation system.
4. Development of Alaska's natural resources for hydroelectric power.
5. Attempts to research and analyze the "population aspects" of economic development. He said his efforts will be aimed toward "sufficient population to develop the vast opportunities that exist in Alaska."
6. Advancement of research and statistical data to provide "tools with which to promote and encourage the development of the base economy of Alaska."
7. The 1962 research into the economic aids available through grants, both public and private.
8. Create priorities for development projects.
9. Promotion and dispensing of informational source material in order "to begin selling the advantages and assets of Alaska throughout the world."

Roloff Appointed To New State Position



Henry Roloff

ANCHORAGE — Gov. William Egan this week announced the appointment of Henry Roloff as commissioner of economic development and planning for the state of Alaska.

For the past several years Roloff has been port director of the Port of Anchorage and previously spent nine years as a member of the administrative staff of the Port of San Diego.

In his new position Roloff will have the responsibility for industry and trade development for the state, promotion and development of air, sea, and land transportation routes and the expansion of transportation to meet the needs of an expanding economy. Also incorporated in the new state division will be the Alaska Tourist Bureau and the State Planning Division.

MARINE DIGEST

JULY 14, 1962

City To Take Up Tideland Issue

The city's legal staff will start work on the tidelands ownership problem sometime the middle of next month. Acting City Manager Richard Gantz told members of the Anchorage port commission yesterday.

The commission had urged the city take action as soon as possible.

The new city manager is due in Anchorage the first of September, Gantz told commissioners, and it is felt desirable to wait until after his arrival.

TRAFFIC WORLD July 7, 1962

Post Open for Director Of Port of Anchorage

The Anchorage Port Commission has announced that it is accepting applications for the position of port director for the Port of Anchorage.

Henry Roloff, port director since January, 1960, was resigning July 31 to accept an appointment by Governor William Egan as commissioner of economic development and planning, said the commission, adding:

"Qualified applicants are being sought in Alaska and from the Pacific coast to head up the \$8.2 million port project now in its second year of operation. Applicants interested in being considered for the position should direct their requests to the chairman, Anchorage Port Commission, P.O. Box 400, Anchorage, Alaska."

PACIFIC SHIPPER JULY 2, 1962

Anchorage Ship Traffic

Port of Anchorage established a new ship traffic record during May with 92 ships and barges using port facilities, Henry Roloff, port director, announced late last month. Extensive off-shore drilling activities by leading oil companies using the port as a supply point were primarily responsible for a 300 per cent increase in January-May ship tonnage over that of the similar 1961 period, he added.

Troopship Due In Afternoon

The troopship U.S.S. General Mann is scheduled to arrive at the Port of Anchorage at 1 p.m. today with 362 military personnel and dependents.

The Mann, on its second visit to Anchorage, will leave for San Francisco at 3 p.m. Friday with 600 military personnel and dependents rotating from Alaska duty stations.

The 623-foot vessel is manned by a U.S. Navy crew, commanded by Capt. C. S. Hart, USN.

1.175