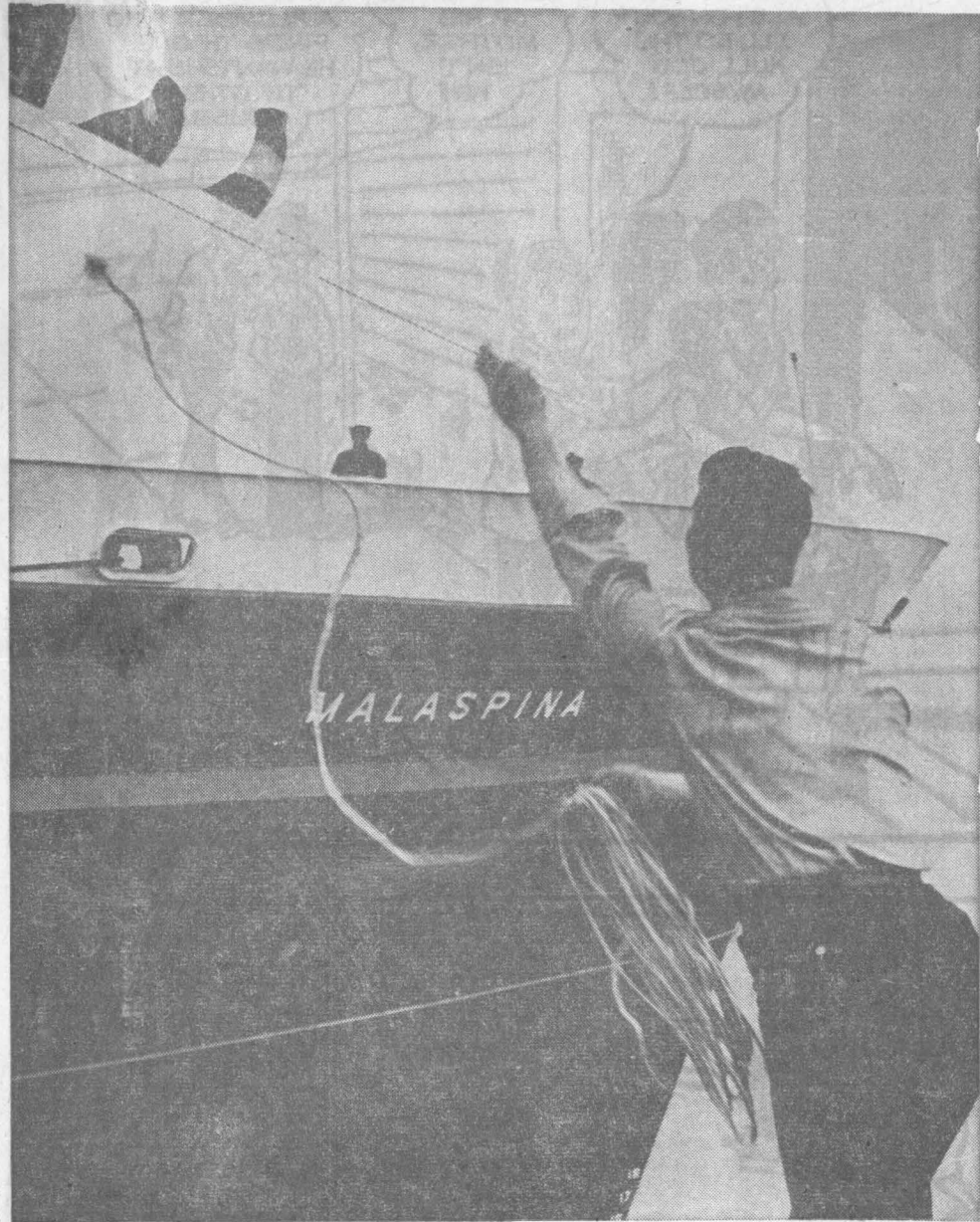


State Ferry Malaspina Makes A Visit To Anchorage



MOORING LINE IS TOSSED TO MALASPINA



COMPASS EXPLAINED

Mrs. Richard Schnerer of Anchorage gets a summary of the operation of the Malaspina's compass from Robert W. Smith, third mate.



'CAPT.' RONALD ASHCRAFT, 3, AT HELM



SEAMAN WALTER JACKINSKY VISITS WITH FAMILY IN SNACK BAR

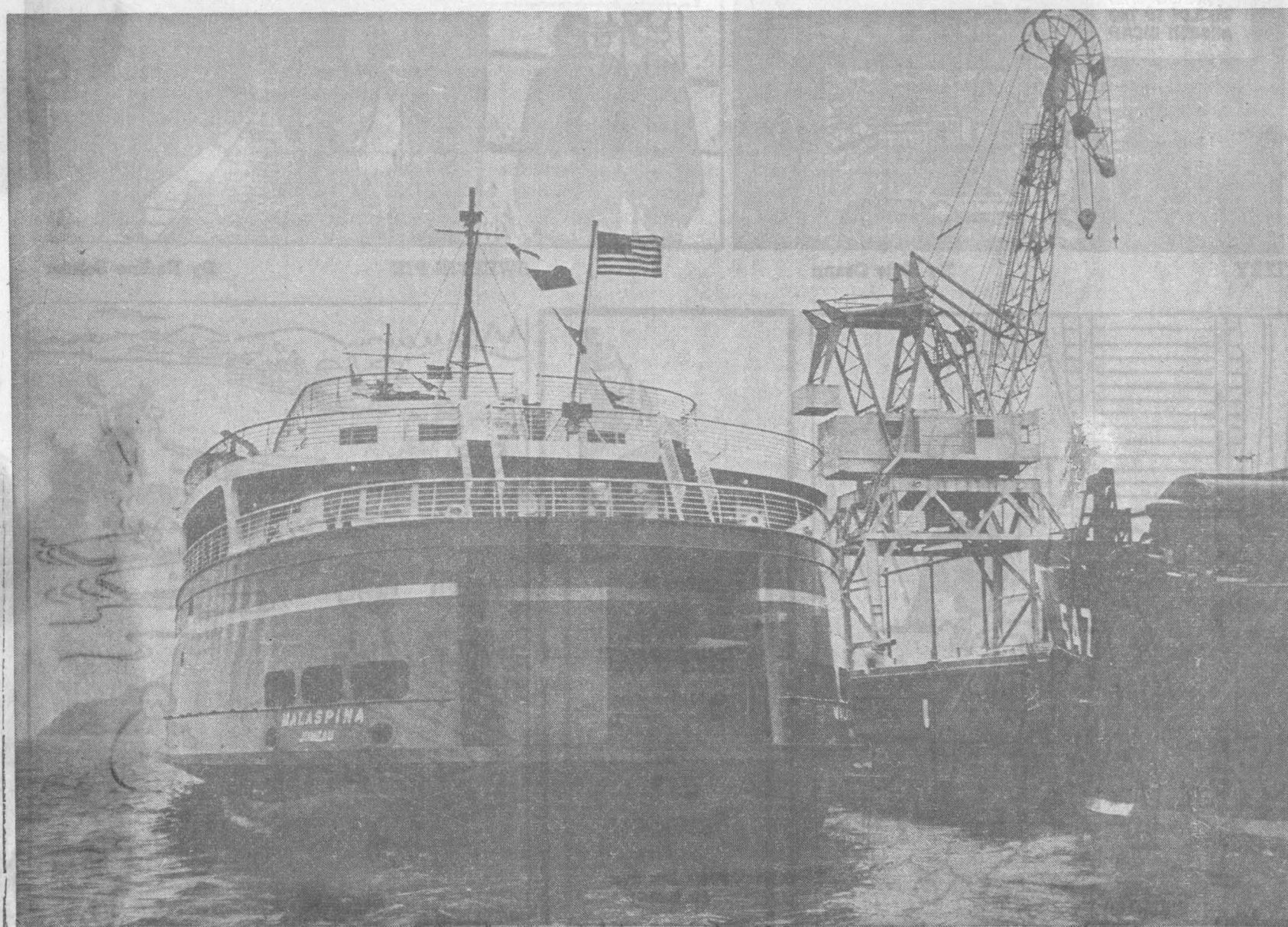


AUTOGRAPH SIGNED

Capt. Otto H. Barkhausen, who acted as pilot for the Malaspina on its cruise to Southcentral Alaska, signs an autograph for a young admirer, Tony Russ, 7, son of Mr. and Mrs. John Russ of Anchorage.



CROWD ENTERS FERRY FOR INSPECTION



STERN VIEW OF STATE FERRY AT ANCHORAGE CITY DOCK



OFFICIALS CONFER IN CAPTAIN'S QUARTERS

Shown in conference in the captain's quarters are, from left, Richard Downing, commissioner of the Alaska Department of Public Works; Capt. Ancy

Hanson of the Malaspina, and Bafford E. Lewellyn, director of the Alaska Division of Marine Transportation.