

# Port Of Anchorage Is Showing A Healthy Growth

## Tonnage Rises In Third Year

The Port of Anchorage is showing a healthy growth in its third year of operation. By mid-1963, the port has handled two and a half times the tonnage which had crossed the dock by June 30 of last year. The port's second quarterly report shows 49,564 tons of cargo handled in April, May and June of this year.

Total for the first six months of the year is 53,734 tons. THIS COMPARES very favorably with the 5,016 tons of cargo reported by June 30 of 1961, the first year of the port's operation, and the 19,947 tons crossing the port dock by June 30 of last year.

Several elements enter into this growth. After losing its scheduled carrier in the first year of operation, the port this spring signed a contract with Alaska Freight Lines for regular, year-round carrier service to its facility.

ANTICIPATED tonnage carried by Alaska Freight Lines for the remainder of the year is expected to be in excess of 60,000 tons.

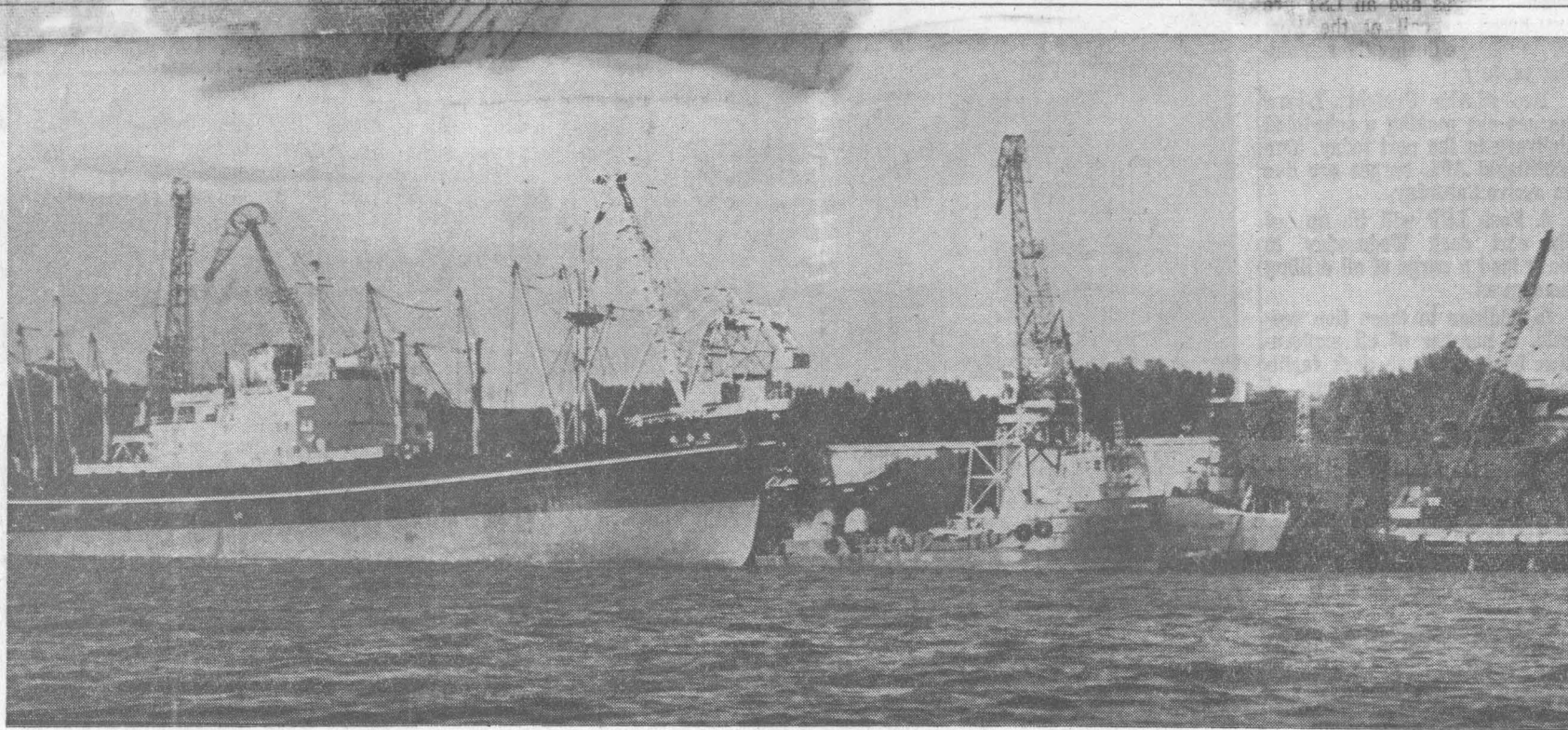
## Republicans Hold Meet

Anchorage Republicans were in Homer Saturday for an organizational meeting with Homer party workers. The meeting was one of a series being held by the party officials from this area. An earlier meeting was held in Palmer while similar sessions are scheduled for Soldotna and Kenai Sept. 13 and 14. Heading the delegation from Anchorage were Rep. Bruce Kendall, speaker of the Alaska House of Representatives; Walter Hickel, national committee man; Frank Harris, chairman of the Republican Central Committee; and Jack Simpson, Southcentral District Committee chairman.

Others in the group included Miss Pat Slack, district vice chairman; Mrs. Margee Fitzpatrick, secretary; and Mrs. Bennie Leonard, whose husband is in the House of Representatives.

Among Homer Republicans attending the sessions, which included a noon luncheon for party workers and a dinner at the Land's End, were Rep. Clem Tillion, R-Halibut Cove; and Mrs. Tillion; Howard Myhill, Homer Republican Club president; Mr. and Mrs. Leo Rhode, Mr. and Mrs. John Pate, Mr. and Mrs. Larry Farnen and Mrs. Alice Eason.

Lowell Thomas Jr., who last fall was the unsuccessful Republican Candidate for the Congressional seat held by U. S. Rep. Ralph Rivers, D-Alaska, was the featured speaker at the dinner.



PORT OF ANCHORAGE ACTIVE IN TOP MONTH TO DATE

June proved to be the most active month to date at the Port of Anchorage with 72 vessels berthing at the port dock in that month. Here a motor vessel and a tug vie for space at the dock which is in its third year of operation. (Anchorage Times Photo)

## 154 Vessels Used City Port During First Half Of 1963

A total of 150 vessels used the Port of Anchorage facilities in the second quarter of this year, according to the port's quarterly report.

Year's total to June 30 was 154 vessels. June marked the busiest month since the port first went into operation in April 1961.

Activities at the port began to stir in April. Thirty vessels called at the port dock during this month.

THE TOTAL was made up from five tugs, four barges, 20 oil exploration vessels and one motor vessel.

May's total was 48 vessels. Nine tugs, 10 barges, 23 oil exploration vessels and one tanker put into the Port of Anchorage in May.

In June, 72 vessels came into the port. This was made up of eight tugs, 20 barges, 40 oil exploration vessels, one ferry (the Alaska ferry Malaspina) and three motor vessels.

OIL'S ROLE as the lifeblood of the port was underlined in the report.

Of the 53,374 tons of cargo crossing the port dock in the

## Lemnitzer In Ottawa

OTTAWA (AP) — Gen. Lyman Lemnitzer, supreme Allied commander in Europe, arrived here today for talks with Canadian government and military leaders.

The American general, accompanied by George Ignatieff, Canada's ambassador to NATO, was met by Defense Minister Paul Hellyer and Air Chief Marshal Frank Miller, chairman of

Every Wheel Has A Hub . .

SUPPORT THE PORT

Keep Anchorage the Hub of Alaskan Commerce

Sandland Const. Co. Inc.

GENERAL CONTRACTORS

RESIDENTIAL—COMMERCIAL

3800 ARCTIC BLVD.

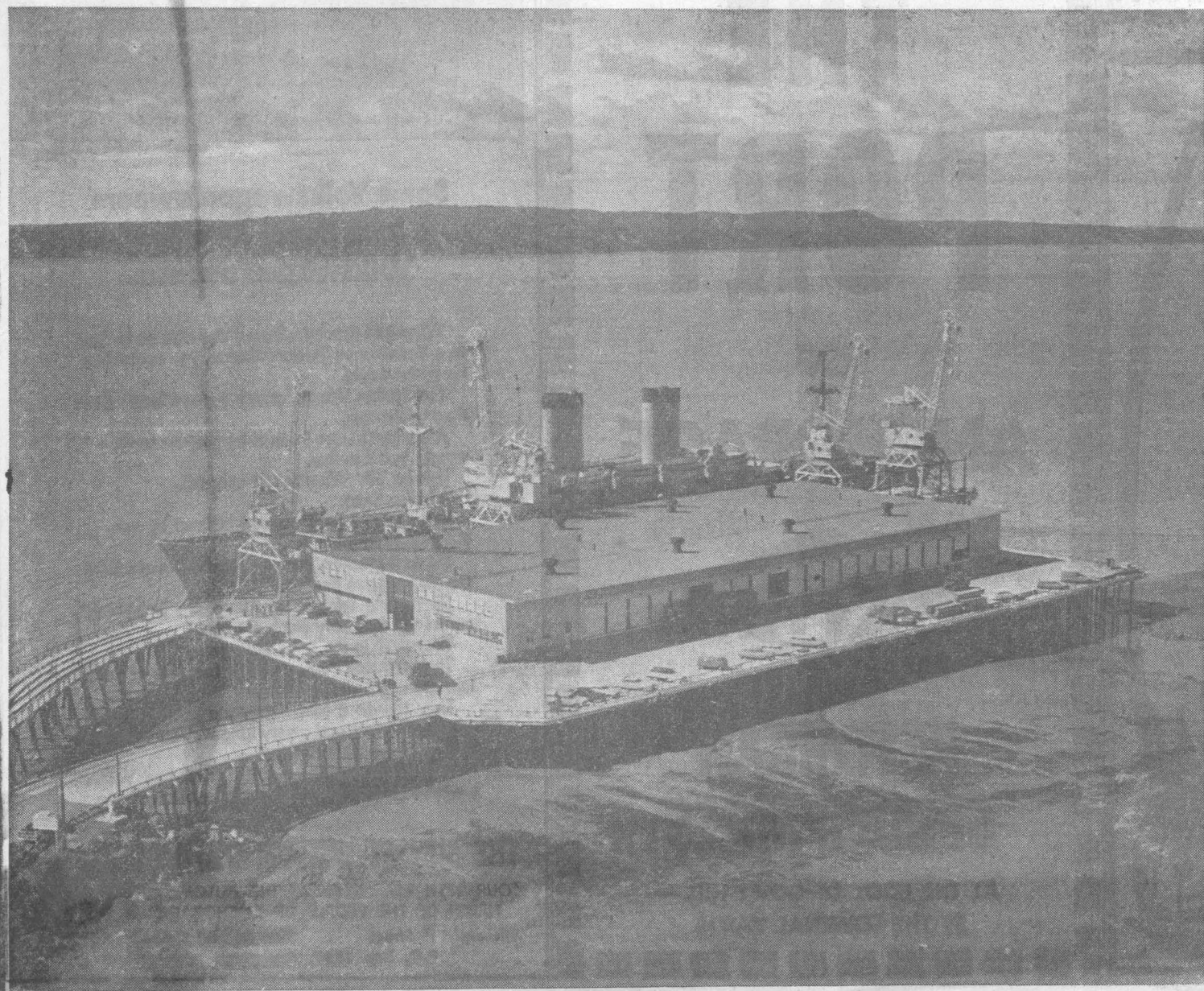
PHONE FA 2-3926

SUPPORT THE PORT KEUFFEL and ESSER CO.

500 FIREWEED LANE

FA 2-4751

## SUPPORT YOUR PORT



T  
H  
E  
P  
O  
R  
T  
O  
F  
A  
N  
C  
H  
O  
R  
A  
G  
E

## Inlet Crab Production 'Best Ever'

This year is shaping up to be the best ever for king crab production in the Cook Inlet fishing district, Alaska Department of Fish and Game statistics indicate.

Through July 17, a total of 640,390 crabs weighing 5,703,746 pounds were taken in the inlet, most in the Kamishak Bay area on the southwest side.

Kachemak Bay off Homer produced the remainder of the crab catch.

Inlet commercial salmon fishing last Thursday was the best of the season for most setnet-

Anchorage Daily Times 7 Tuesday, July 23, 1963

ters, but the setnetters' gain was the drift fishermen's loss.

THE SALMON that had been moving up the inlet steadily, providing drift fishermen — the men who fish from boats — with good fishing, moved into shore. By week's end, most of the drifters had quit for the season or were making plans to do so.

In the upper inlet, good catches of red salmon were reported by a number of setnetters.

In the outer inlet district — at Port Dick and Rocky Bay — salmon seining was described as "dismal" by the state.

The chum salmon run there appeared to be over.

## YES! WE DO SUPPORT THE PORT!

WE SHIP OUR PRODUCTS ACROSS THE PORT OF ANCHORAGE TO OUR DISTRIBUTOR—THENCE TO YOUR FAVORITE FOOD STORE—THENCE TO YOUR HOME

- APPLE GROWERS' ASSOCIATION OF HOOD RIVER
- FOREMOST DAIRIES, Inc.
- BLUE MOUNTAIN DOG FOODS
- WESTPCO BAKERY SUPPLIES

ALL REPRESENTED BY

ZERNIA & COMPANY

ANCHORAGE

HAROLD'S

(Alaska's Largest Exclusive Shoe Store)

beautiful steps from ship to shore



Yes, these beautiful shoes (and hundreds more) came by ship to the Port of Anchorage just so you ladies could step out in comfortable Fashion this fall.

more than 100 styles at \$5.95

CAN BE SEEN AT . . .

HAROLD'S shoes

415 4th Avenue (next to the Hofbrau) BR 4-8984