



EX-COAST GUARDSMAN DIRECTS PORT

Capt. A. E. Harned, director of the Port of Anchorage since March of this year, had been a member of the U.S. Coast Guard from 1933 until he resigned earlier this year to take over the operation of the port. At the time of his retirement, Harned, 51, was chief of staff for Rear Adm. W. D. Shields, commander of the 17th Coast Guard District. He was stationed in Juneau. Harned graduated from the Coast Guard Academy in New London, Conn., in 1933. He saw service in the southeastern United States, in the South Pacific and in Alaska.

(Anchorage Times Photo)

Airline Contract Okayed By CAB

WASHINGTON — The Civil Aeronautics Board approved Monday an agreement under which Northern Consolidated Airlines will subcontract some Military Air Transport Service duties in Alaska to Cordova Airlines.

The Norwegian merchant marine is the third largest in the world.

MT. VIEW Builder Supply

FORMERLY: 3260 Glenn Hwy.
SAME PLACE — NEW ADDRESS:
3148 Mt. View Drive

We buy Outside only the
products that cannot be
bought in Alaska!
What we can't get here
We Ship Via
PORT OF ANCHORAGE

P O A SPECIALS

**SHEETROCK
INSULATION
PLYWOOD PANELING**

OPEN WEEKDAYS 8 A.M. TO 6 P.M.
Phone BR 7-9752

AUDIOCAM CORPORATION

IS
THE COMPLETE AUDIO STORE
IN ALASKA

AR RCA KLH BELL BOGEN GRADO SHURE AMPEX GARRARD ROBERTS WEATHERS H. H. SCOTT McINTOSH CONCERTONE ELECTROVOICE ALTEC LANSING HARMON KARDON STANDARD SYSTEMS	TAPE TUNERS RECORDS SPEAKERS AMPLIFIERS MICROPHONES MUSIC SYSTEMS TAPE RECORDERS STEREO HEAD SETS INTERCOMMUNICATION ENGINEERING—DESIGN INSTALLATION AUDIOCAM SUPPORTS THE USERS OF PORT FACILITIES AUDIOCAM 328 Fourth Ave.
---	--

Barges Plan Port Visits

Four barges and an LST are scheduled to call at the Port of Anchorage during the remainder of July.

Two Alaska Freight Line barges are making a scheduled delivery to the port today. Two additional AFL barges are due to arrive Saturday.

A Foss LST will tie up at the port dock Wednesday to back load a cargo of oil drilling equipment.

In addition to these five vessels, a number of oil exploration boats will use dock facilities during the remainder of July.

Newsprint For Anchorage Times Came Via Port

The Anchorage Times' action earlier this year in requiring that its newsprint be shipped over the Port of Anchorage dock may have started a trend.

Negotiations are now under way, it is understood, for other newspapers in the Anchorage and Fairbanks areas to receive their newsprint over the Port of Anchorage dock.

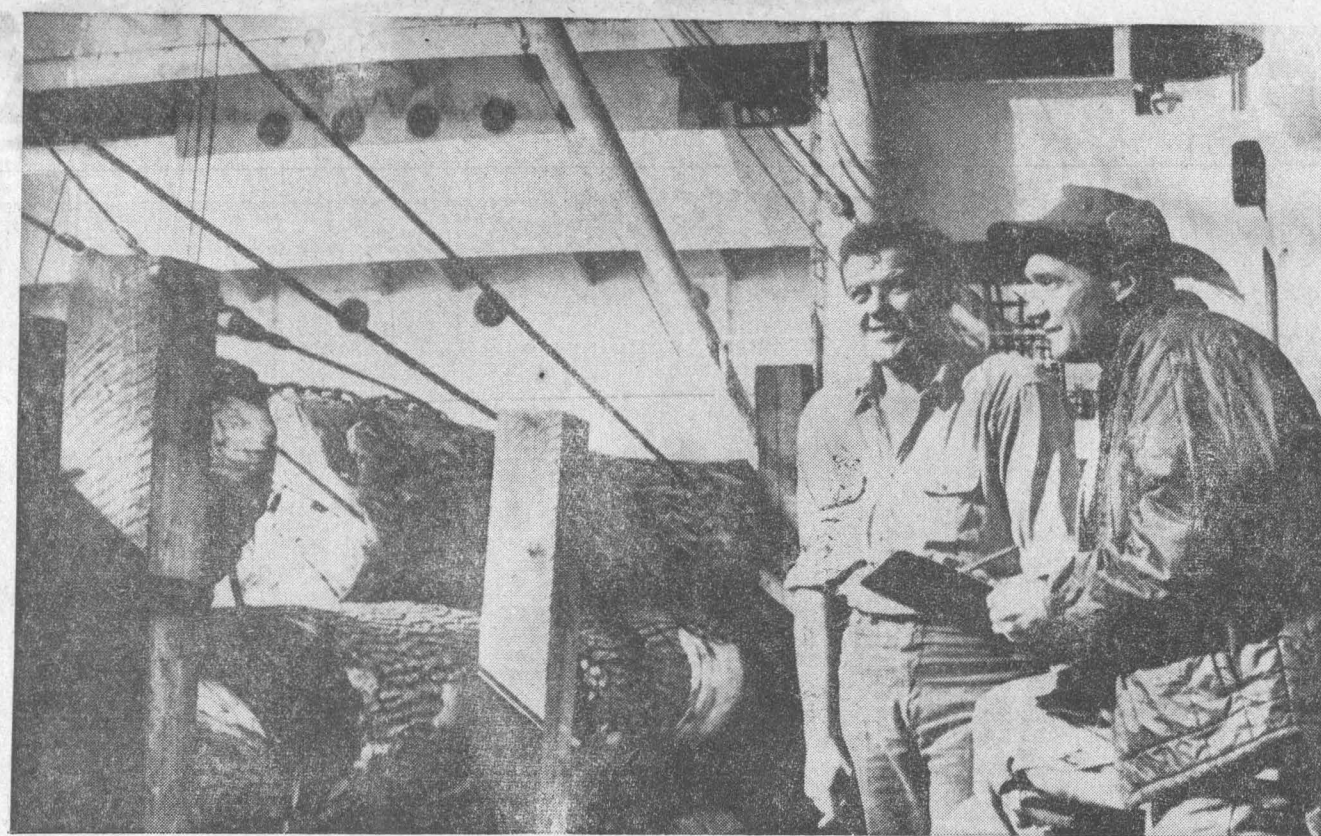
In late June, the Alaska Steamship Co. Coastal Nomad put into the port with 500 tons of newsprint for The Anchorage Times. This marked the first visit of Alaska Steamship Co. to the port facility and the first visit of a vessel from this line into Anchorage for some years.

Committee Cuts Foreign Aid

WASHINGTON — The Senate Foreign Relations Committee voted today to cut another \$105 million from the administration's \$4.5 billion foreign aid program and to require at least 2 per cent interest on all loans under the program.

The committee also adopted an amendment by Sen. Frank Church, D-Idaho, to shut off all future military aid grants to prosperous western European nations and Japan.

Except where the United States has firm commitments made prior to July 1, grants to these countries would be limited to a maximum of \$1 million to each for orientation and training expenses.



EYE LOGS BOUND FOR JAPAN

Bud Kowalski, left, and Ralph Alonis look over a cargo of logs which the Alaska Mail carried to Japan. The cottonwood logs came from Washington state. Efforts are being made locally to establish a

timber shipping industry from the Anchorage area. The Alaska Mail loaded a test shipment of Alaska logs for Japan when she was in this area last month. (Anchorage Times Photo)

Forestry Trade Sought For Port

Officers have been selected and members added to the Forest Products Promotion Committee of the Port of Anchorage.

Harold Strandberg, state representative, is the new chairman. Rodney L. Johnson, retired vice president of the National Bank of Alaska, is the vice chairman. A. E. Harned, director of the Port of Anchorage, is executive secretary.

The next meeting of the committee is set for July 30 at the port municipal terminal. The other seven members of the committee are George D. Jackson, chairman of the Greater Anchorage Chamber of Commerce port development committee; Earl A. Plourde, state forester for the state Department of Natural Resources; Roger R. Robinson, state director of the U.S. Bureau of Land Management; and Don Christman of the forestry and range division of the Bureau of Land Management.

ALSO SERVING are John E. Manley, general manager of the Alaska Railroad; Clyde Courtinage, director of the U.S. Department of Commerce and Bob Logan, representative of Lloyds of London. The committee was formed "to study the procurement, shipping and marketing of timber from the rail belt area," according to port officials. Port Director A. E. Harned pointed out that the committee is made up of men who know the forests, industry, marketing and shipping and problems in these areas.

THE PORT director said if study by the group determined that timber costs could not be made competitive with the West Coast, "we will have to cut our costs some more between the standing timber and the markets."

He pointed out that Japan is seeking timber of the type which could be provided from the Anchorage area. While the group is concentrating on timber shipping, other

cargoes which could be generated in this area are not being overlooked.

FISH, KING crab and other sea products are a possible future cargo to draw ships into the Port of Anchorage, Harned said.

Building materials such as concrete block, manufactured in Anchorage, could provide cargoes locally, Harned said.

Concrete Conduit of Anchorage, which shipped building materials to Cordova following a fire there recently, could export its products to Kodiak and other communities, Harned pointed out.

IF THE FERRY operated by the state makes Anchorage a regular port of call, it could carry freight to ports along its route.

Scrap, while not a high revenue cargo, moves out through the port fairly regularly. Fuel oil and other petroleum products for Cook Inlet communities, coal from the Matanuska Valley coal fields . . . all are potential cargoes for the Port of Anchorage.

The lack of back haul cargo has limited the profitability of vessels calling at the Port of Anchorage. The port is determined to develop cargoes locally to change this situation.

Both Globke and the Adenauer government have denied persistent Communist charges that Globke had a key role in the Nazi persecution of the Jews.

Evidence against Globke consisted largely of documents and films from the Nazi period. During the eleven-day show trial the prosecution claimed that Globke, as a high official of the Nazi interior ministry, initiated legislation that provided a basis for persecution of the Jews.

OPENING OF the trial and today's final proceedings were

PRODUCER DIES

HOLLYWOOD — Producer Robert Sparks who made the "Blondie" motion pictures has died in Hollywood of a heart attack at the age of 62. Sparks is survived by his wife, actress Penny Singleton who played the title role in the series. Also surviving are the couple's two daughters.

Several small rivers called Esk in Scotland unite into a 35-mile stream which flows into the Solway Firth.

COMMUNISTS CONVICT TOP ADENAUER AIDE

BERLIN — The Supreme Court of Communist East Germany sentenced Hans Globke, 64, one of Chancellor Konrad Adenauer's chief aides, to life imprisonment in absentia today for crimes against humanity and war crimes.

Presiding Judge Heinrich Toeplitz, standing under a large Communist plaque in the East Berlin courtroom, handed down the verdict.

The sentence can only be carried out in the unlikely event that the state secretary of the West German chancellery sets foot in East Germany.

Evidence against Globke consisted largely of documents and films from the Nazi period. During the eleven-day show trial the prosecution claimed that Globke, as a high official of the Nazi interior ministry, initiated legislation that provided a basis for persecution of the Jews.

OPENING OF the trial and today's final proceedings were

PRODUCER DIES

HOLLYWOOD — Producer Robert Sparks who made the "Blondie" motion pictures has died in Hollywood of a heart attack at the age of 62. Sparks is survived by his wife, actress Penny Singleton who played the title role in the series. Also surviving are the couple's two daughters.

Several small rivers called Esk in Scotland unite into a 35-mile stream which flows into the Solway Firth.

**A CITY WITH A PORT
IS A GROWING CITY...
WE'RE FOR GROWTH**

Volvo 122S 4-door sedan

**JOHNSTON'S VOLVO
SALES**

Complete service department with personnel thoroughly experienced in repairs of all foreign and domestic automobiles.

COMPLETE PARTS INVENTORY ON VOLVO

109 Ea. Fireweed Lane BR 8-0455

**AHOY THERE!
WE ALSO SHIP
VIA
PORT OF ANCHORAGE**

**PLUMBING & HEATING
SUPPLIES
BATHROOM FIXTURES — FITTINGS
PIPE — HEATING SUPPLIES —
AND HOT TANKS — TO NAME A FEW ITEMS!**

**TOM'S PLUMBING &
HEATING**

BR 4-7443

FORMERLY:
3100 East 5th Ave.
—SAME LOCATION—
Different Address
3100 Mt. View Drive

**WE
SUPPORT
THE
PORT
OF
ANCHORAGE**

KSM

**KETCHIKAN
SPRUCE MILLS**

AT THE FOOT OF GOV'T HILL —
IN THE TERMINAL YARDS

STANDARD NAMES SET FOR CITY PORT DOCKS

The Anchorage City Council has approved adopting standard names for all terminals located within the Port of Anchorage area.

Noting that it is the duty of the port commission to properly develop the Port of Anchorage, which is intended to include more than the city's port facility, the council last week agreed to standard names for the several marine terminals located there.

The council has encouraged the use of the following names for terminals in the port area. The city owned facility operated by the port commission shall be known as the Municipal Terminal of the Port of Anchorage.

The government owned facility operated by the United States Army shall be known as Ocean Dock.

THE FACILITY operated by the Permanente Cement Co. shall be known as Permanente Dock.

The facilities operated by the Union Oil Co. shall be known as Asphalt Dock.

The Alaska Fish and Farm Products facilities shall be known as the Alaska Fish and Farm Dock.

The facilities operated by Cook Inlet Tug and Barge Co. shall be known as Anderson Dock.

TIDEWATER Packing Co. facilities will be known as the Tidewater Dock.

The facilities operated by the Alaska Aggregate Co. shall be known as Alameda Dock.

The facilities operated by the H. J. Emard Co. shall be known as Emard Dock and facilities operated by the Anchorage Marina shall be known as the Marina Dock.

All facilities listed go to make up the Port of Anchorage.

Funeral services and interment for Mrs. Kate Elizabeth Cooper, 79, will be in Seattle, Wash., with Hoffman's, Fisher and Kalfus Funeral home in charge of arrangements.

Mrs. Cooper was born Aug. 7, 1883 in Coventry, England, and had resided here with her daughter and son-in-law, Sgt. and Mrs. Stephen J. Meaney, 120 So. Glenn St., since February of 1961.

Survivors include another daughter, Mrs. Doris I. Matthew of Fall City, Wash.; a sister, Mrs. Edith Webster of Leicester, England, two grandchildren and one great grandchild.

Interment will be in Evergreen Memorial Cemetery in Seattle. Arrangements locally were by Anchorage Funeral Chapel.

**Through the
PORT
TO US
TO YOU!**

KRAFT PRODUCTS • STAPLES
CANNED GROCERIES • PAPER PRODUCTS
WHOLESALE ONLY

**FRIGID FRUIT
& PRODUCE CO.**

2404 Barrow St. Phone BR 5-7743

**And Both Came
Over the Port
Support Your Port**

©1963 VOLKSWAGEN OF AMERICA, INC.

**Some Volkswagen owners
look down on other
Volkswagen owners.**

When you graduate from a Volkswagen Sedan to a Volkswagen Station Wagon, you really step up in the world.

The Station Wagon stands a good foot taller than other cars.

And it holds more than the biggest conventional wagon you can find.

But the VW Wagon isn't only tall. It's also short.

We saved 4 feet of hood in front by putting the engine in back.

Big as it is inside, it's only 9 inches longer than the Volkswagen Sedan.

So people who move up to the high-slung model still feel very much at home.

They park in the same little spots.

They still don't worry about freezing on boiling; the engine is air-cooled.

They still go a long way on a gallon of gas (about 24 miles) and a very long way on a set of tires (about 30,000 miles).

And it just tickles them to drive one Volkswagen and look down on a million others.

THE SUNSET MOTOR CO., INC.

"OUR 27TH YEAR SERVING THE AUTOMOTIVE
NEEDS OF THE PEOPLE OF ANCHORAGE"

5th and "H" Street BR 2-6531
P.O. Box 1559, Anchorage