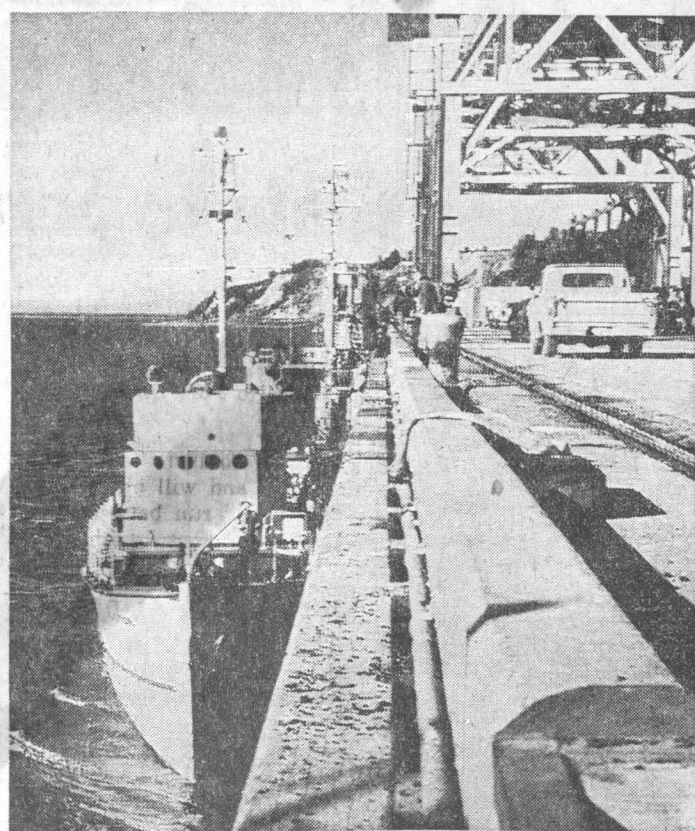
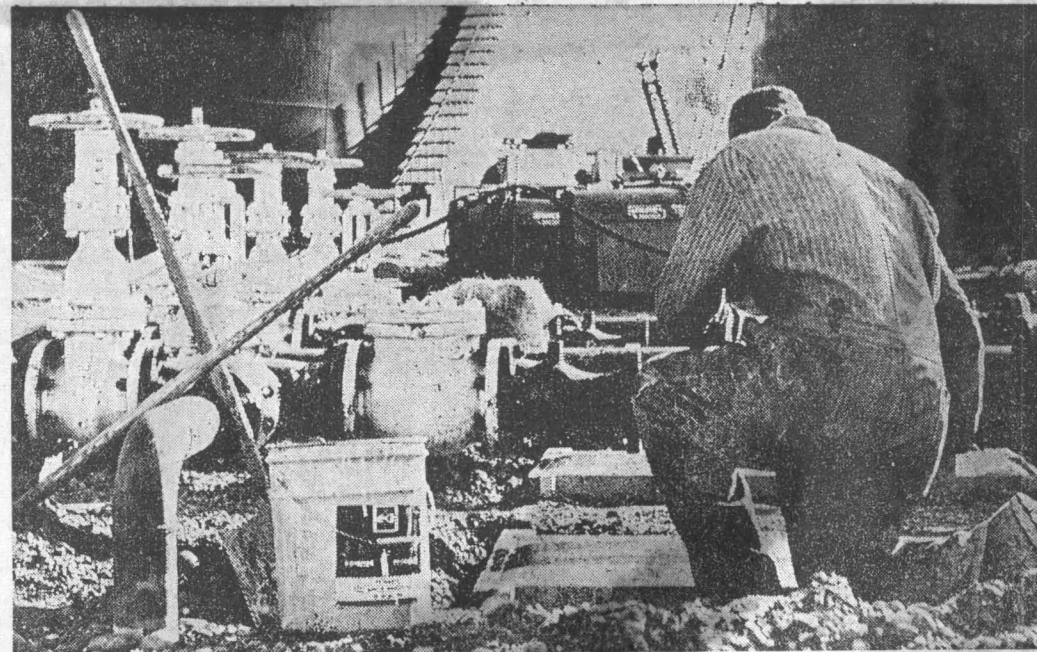


Temporary petroleum dock was used heavily during the summer.



Small boats line the city dock between visits of Sea-Land.



Tank farm facilities were increased by 290 per cent.

## ARDEN NORTH STAR DAIRY

3137 MOUNTAIN VIEW DR.  
BR 5-5123

We Always HAVE Used the Port Heavily.  
We Anticipate an INCREASE In Our Need.  
We THOROUGHLY APPROVE the Improvements  
Planned for the Port of Anchorage.

They Can't Come Too Soon!

R. C. STANGL  
Manager

## ALASKA FLOORS, INC.

TUDOR RD. & SEWARD HWY.

BR 6-3073

Business survival in Alaska depends heavily upon available transportation facilities.

Growth of any commercial enterprise, in Anchorage, depends almost completely upon progress in those transportation facilities; upon the development of greater economy and efficiency, for the benefit, first, of the Merchants and, logically following, of the Community as a whole, in docking and transportation.

This company applauds, and wholeheartedly supports, the Port of Anchorage Commission in its plans for progress and success for Alaska's major deep-water facility.

R. N. Hammill-Manager

## Spenard Plastering

*Salutes  
Both The  
Mayor's  
Proclamation  
and the  
ANCHORAGE  
CITY  
PORT.*

*We Hope 1965  
Will Be Its  
Most  
Successful  
Year!*

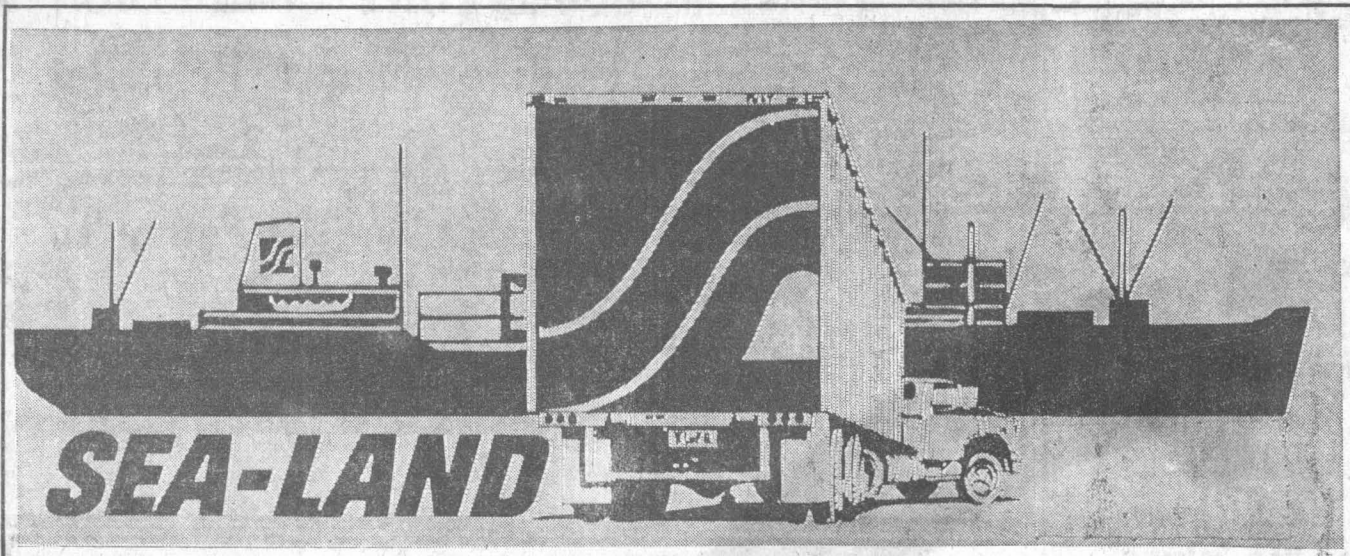
## ALASKA VAN & STORAGE

2216 POST ROAD

BR 8-4405

WE HAVE LONG ENJOYED THE COOPERATIVE EFFORTS OF THE PORT OF ANCHORAGE, AND WE ANTICIPATE, WITH PRIDE AND HIGH EXPECTATION, THE INCREASED ECONOMY AND SERVICE PLANNED BY OUR DEEP-WATER FACILITY.

LARRY LANDRY



# SEA-LAND SALUTES THE PORT OF ANCHORAGE

*Just a Few Recent Quotes About  
Sea-Land From Anchorage Daily News*

"The S. S. Anchorage berthed on flood tide a little after 2 p.m. yesterday after negotiating the Cook Inlet with ease . . ."

"The Commandant of the 17th Coast Guard reportedly said, 'The ice was the worst it has been in many years' . . ."

"Vessel wades through Cook Inlet to dock here."

"... The ship will sail today for Kodiak and from there leave for Seattle."



"S. S. ANCHORAGE"

When Shipping To and From Alaska  
Consider Our Facilities For All Your Shipping Needs.  
Located At Port of Anchorage  
Phone BR 6-6151