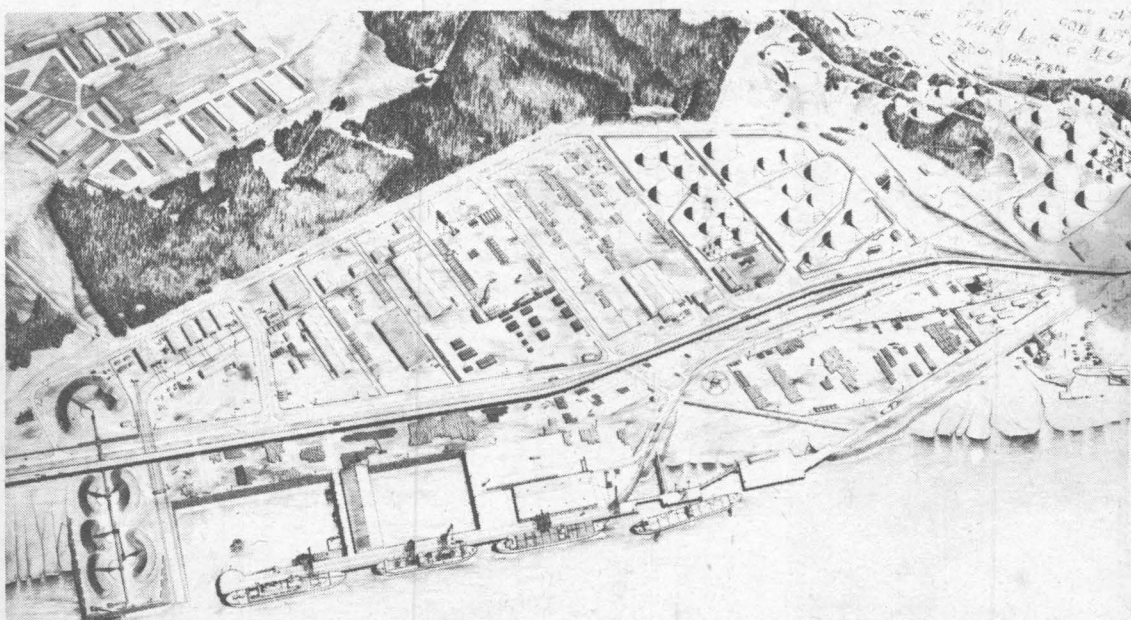




A Vital Link in the Chain of ALASKAN PROGRESS

SHIPMENTS
MOVE
FASTER
THROUGH
ANCHORAGE



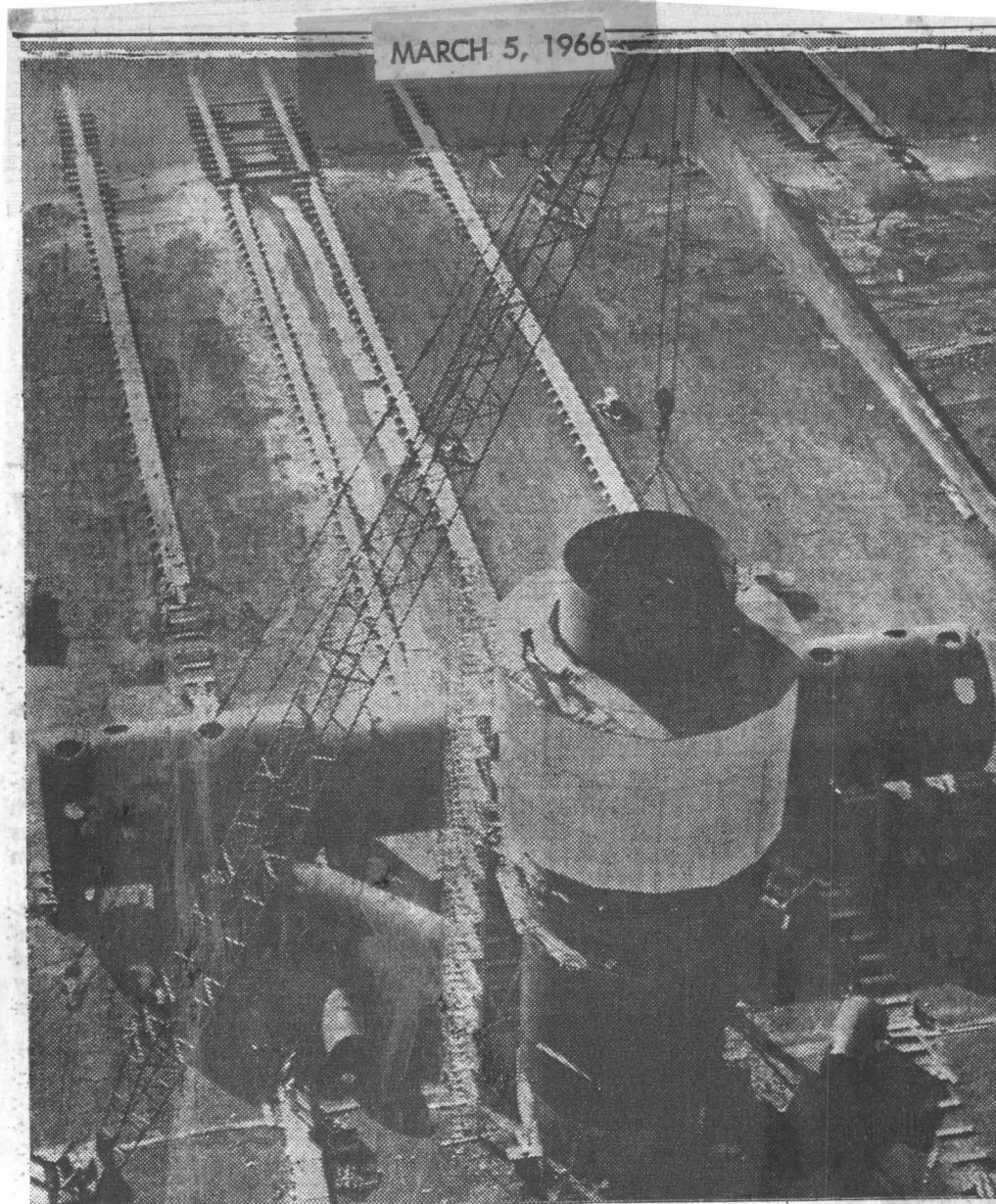
LOOKING
FOR THE
IDEAL
INDUSTRIAL
SITE?

Existing facilities consist of a 600 foot dry cargo, dock, transit shed, 4 level luffing crane, one 27½ ton container crane and a 617 foot petroleum dock. Under construction is a 600 foot extension of the General Cargo Terminal with completion expected in the fall of 1967. Sea-Land Service, Inc., provides the most economical freight service from most of the major points in the continental U.S., giving four day service from Seattle. K-Line is scheduling freight service from Japan starting with the 1967 season.

CROSSROAD OF CENTRAL ALASKA

PORT OF ANCHORAGE

Alaska's fastest growing deepwater port is strategically located near downtown Anchorage... the wholesale, financial and population center of Alaska as well as being the supply and administrative center for the dynamic Cook Inlet Oil Fields. Expert stevedoring and highspeed cranes speed cargo toward its destination. The Port's rapidly developing Industrial Park has tracts totaling 20 acres immediately available for long term lease. For information on facilities, rates, routing and schedules write or wire Port of Anchorage, 2000 Anchorage Port Road, Anchorage, Alaska.



PLATFORM WILL OPERATE IN COOK INLET

This oil drilling platform, under construction at Portland, Ore., will be launched May 15 and towed to Trading Bay in Cook Inlet where it will be operated by the Union Oil Co. of California and Marathon Oil Co. The structure differs from conventional platforms in that it will have one center leg with a deck mounted on it. Other drilling structures have four legs. For another photo, see Page 5.

Union-Marathon Oil Platform Slated For May 15 Launch Date

Launching of a mammoth and unique oil drilling platform which will operate in Cook Inlet has been scheduled for May 15. The event will take place at Portland, Ore., where the platform is taking shape and from where it will be towed to Alaska. Completed, the platform will have an overall height of about 152 feet. The deck sections will be installed after the structure has been set on the floor of Cook Inlet. The platform, the first of its kind, is being built for the Union Oil Co. of California and the Marathon Oil Co. by the American Pipe Co. on a contract from a subsidiary of the Brown and Root, Inc., Houston, Texas, which designed it. The structure will be towed to Trading Bay in Cook Inlet, about 70 miles from Anchorage. It will be capable of drilling 32 wells.

When the drilling structure is properly positioned in Trading Bay the pontoons will slowly be allowed to fill with water so that the platform will settle to the floor of the bay, with the pontoons resting on the bay floor.

About 60 feet of the structure will be above the bay at low tide; at high tide, about 30 feet will be above the water surface. The platform gains another 23 feet above the water surface when the deck is installed.

The Trading Bay 1-A discovery well, brought in during the summer of 1965, had a stabilized test production of 1,670 barrels a day. Union was the operator on the discovery with Union and Marathon holding a two-thirds interest in the well.

The remaining one-third interest is split between Texaco and Superior oil companies. Union and Marathon jointly hold substantial acreage in the surrounding area.

Full development of oil drilling platforms scheduled to be installed in Cook Inlet this summer could stabilize Alaska's economy within two years, Gov. William A. Egan predicted today.

The governor, in confirming plans to participate in unique "launching ceremonies" at Portland, estimated that state revenue from full production of the platforms would be from \$18 million to \$23 million per year. "I think this can happen by 1969," said Egan. "It will mean Alaska will take its place as one of the major oil producers of the world, but the benefits won't stop with just oil production. We'll have new industries, too."

"The launching ceremony is planned because the platform is so revolutionary, with its one leg instead of the usual four, and because it can mark so important an advance in Alaska's oil development," the governor explained.

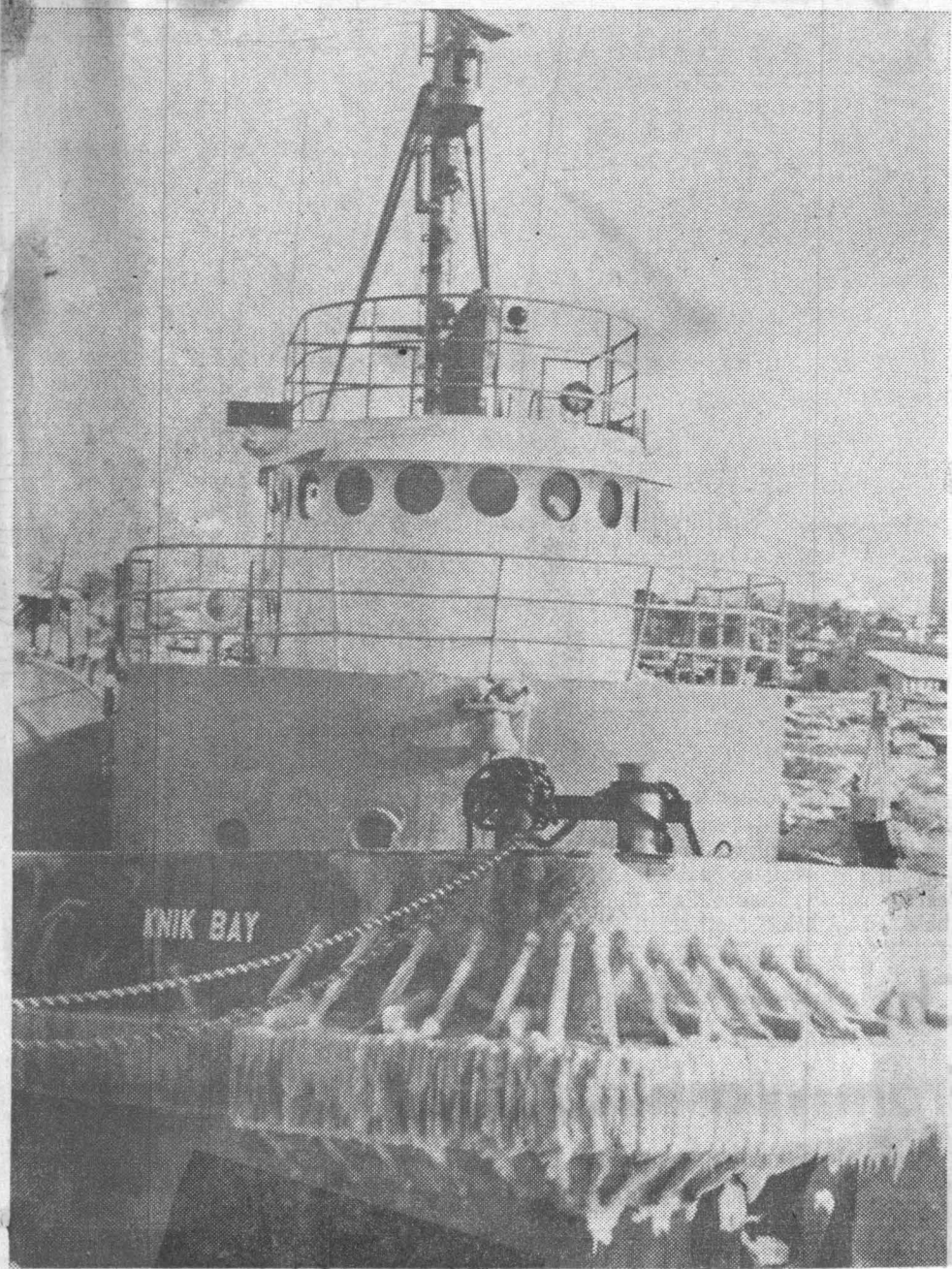
"Many officials of both oil companies will be there," he said. "And officials of other firms also will participate because the entire industry has expressed interest in this particular project."

The platform will be joined in Cook Inlet by a series of others this summer. The total capacity, according to the governor, is 250,000 barrels per day.

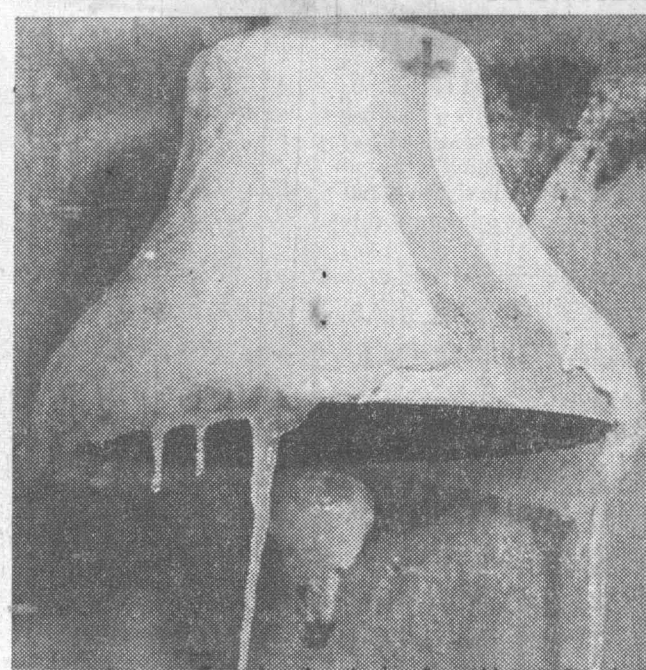
"Figuring the wealth from the four producing wells so far and the potential of the 256 wells of the eight platforms, Alaska is on the verge of the most important development since statehood," said the governor.

Ice Breaker Picks Up Ice On First Trip Through Inlet

Tuesday, March 8, 1966



A VETERAN OF 20 YEARS on tug boats in the Pacific Northwest, Master of the Knik Bay, Floyd Johnson, spent his first day in Anchorage asleep. With the exception of a few hours catnapping, weather had him up for the whole trip. Skipper Johnson said the roughest part of the trip was off the mouth of the Copper River where the weather was bad and he had to maneuver around the Russian fishing fleet working there.



ICY BELL begins to thaw after rough night in Cook Inlet. Vessel had to reduce speed on run up inlet because of high winds breaking water over bow.



TAKING A BREAK while on watch clearing the decks of ice, Knik Bay seaman George Brydoh, takes aboard some hot coffee. (Daily News photos)

Anchorage Port Gives Nod To Shipping Line

ANCHORAGE — The Anchorage Port Commission has okayed an amended preferential berthing agreement with Sea-Land Service Inc. that will permit more frequent ship arrivals at the Port of Anchorage.

Under the new agreement, Sea-Land will be allowed to use the port every six days for a maximum 44 hour period.

The agreement requires the corporation to notify the port 30 days in advance of its docking schedule so other shipping companies "may build their schedules around" that of Sea-Land.

Alaska Steam To Use State Ferry Route

SEATTLE, March 22 (AP) — Alaska Steamship Company said today it will begin using Alaska State ferries next month for short general cargo hauls to Alaska ports.

The ferry Tustumena will be used on an initial 76-mile cargo run from Valdez to Cordova. The company said the service would be expanded to other ports where feasible.

Alaska Steam will absorb the ferry freight rates and additional costs of handling cargo.

3/22/67
Daily News

Anchorage Daily Times
Tuesday, March 7, 1967

Painter New Chief At Port

H. Russell Painter, 44, was named director of the Port of Anchorage today by City Manager Ben Marsh. Painter has been acting port director since January when he was named after the resignation of Capt. A. E. Harned.

Painter, who came to Anchorage from Seward, joined the city as assistant port director in March 1966. He has been involved in water and general transportation activities since 1940.

"His knowledge and experience obtained in assignments with the Alaska Railroad and Alaska Steamship Co., in Seward and his supervisory experience with the Port of Whittier have enabled him to make valuable contributions to port operations to date," Marsh said as he announced the appointment.

"I am sure that under Russ Painter's direction the port will continue to progress and develop into an even more important economic asset to the community," Marsh said.