



A TIGHT SQUEEZE TO GET ABOARD

Alaska's superferry, the Wickersham, carried a near-capacity load of Anchorage area business and civic leaders on a brief Cook Inlet cruise before departing for more southern waters Tuesday evening. Shown here are some of the "VIPs" getting aboard using stairs to a lower deck.



A VIEW OF INLET'S FIRE ISLAND

Calm seas and sunny skies combined to make the rail-watching a favorite activity for passengers aboard the cruise sponsored by the state's Division of Marine Transportation and the Alaska Business Council. Here a passenger watches as the Wickersham passes a tug with Fire Island off in the distance.



The Gangplank Went In, Then Out For Partygoers

Stragglers who lost track of the time after a VIP cruise on the Wickersham posed a bit of a problem for the plush superferry as it tried to pull out of the Port of Anchorage Tuesday night.

The partying stragglers were noticed for the first time after crewmen had pulled in the gangplank preparing to take off. Naturally, the VIPs wanted off so the gangplank had to go out again.

All told, the gangplank was pulled in and put out several times before all the stragglers left the ship to return home.

The party cruise ended at 5 p.m. but the last partygoers left the ship just before 9 p.m., when the Wickersham pulled out on the first leg of a trip to Southeastern Alaska and Vancouver, B.C., after four days here.

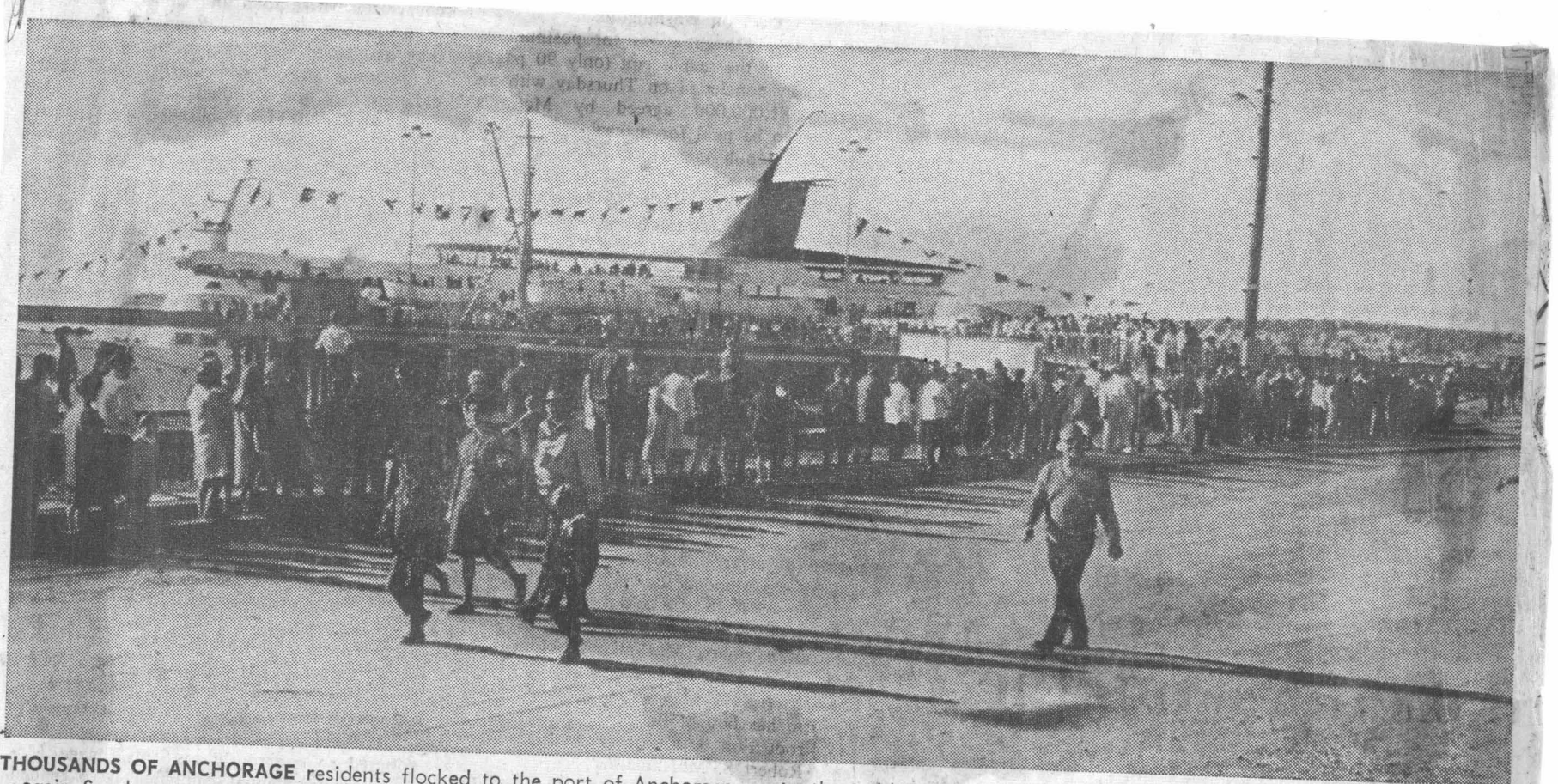
ANYONE FOR SNACKS?

In the ship's lounges cocktails were available to the guests. Here waiter Gary Peters brings a load of snacks. The inlet cruise was the final feature of the Wickersham's long-weekend visit to the Port of Anchorage before sailing south on a trip to Vancouver and Seattle, where it will be docked for minor repairs.



THE DOCK EXTENSION is taking shape at the Port of Anchorage, as workmen finish setting in reinforcing irons for another concrete pouring. The \$1 million-plus extension, which will give Anchorage more berthing

space for ships, is scheduled to be completed in mid-October. The extension will be 271 feet long. The work is being done by contractors Morrison-Knudsen of Boise, Idaho. (Daily Newsphoto by Robin Smith)



THOUSANDS OF ANCHORAGE residents flocked to the port of Anchorage again Sunday to get a look at the state's new ferry—the M.V. Wickersham—while it is visiting Anchorage. The vessel will remain here until Tuesday when it will head for Vancouver, B.C. The ferry will be open

to the public today from 10 a.m. until 7 p.m. and again on Tuesday morning. The vessel will also go on a "mini-cruise" in upper Cook Inlet Tuesday afternoon.

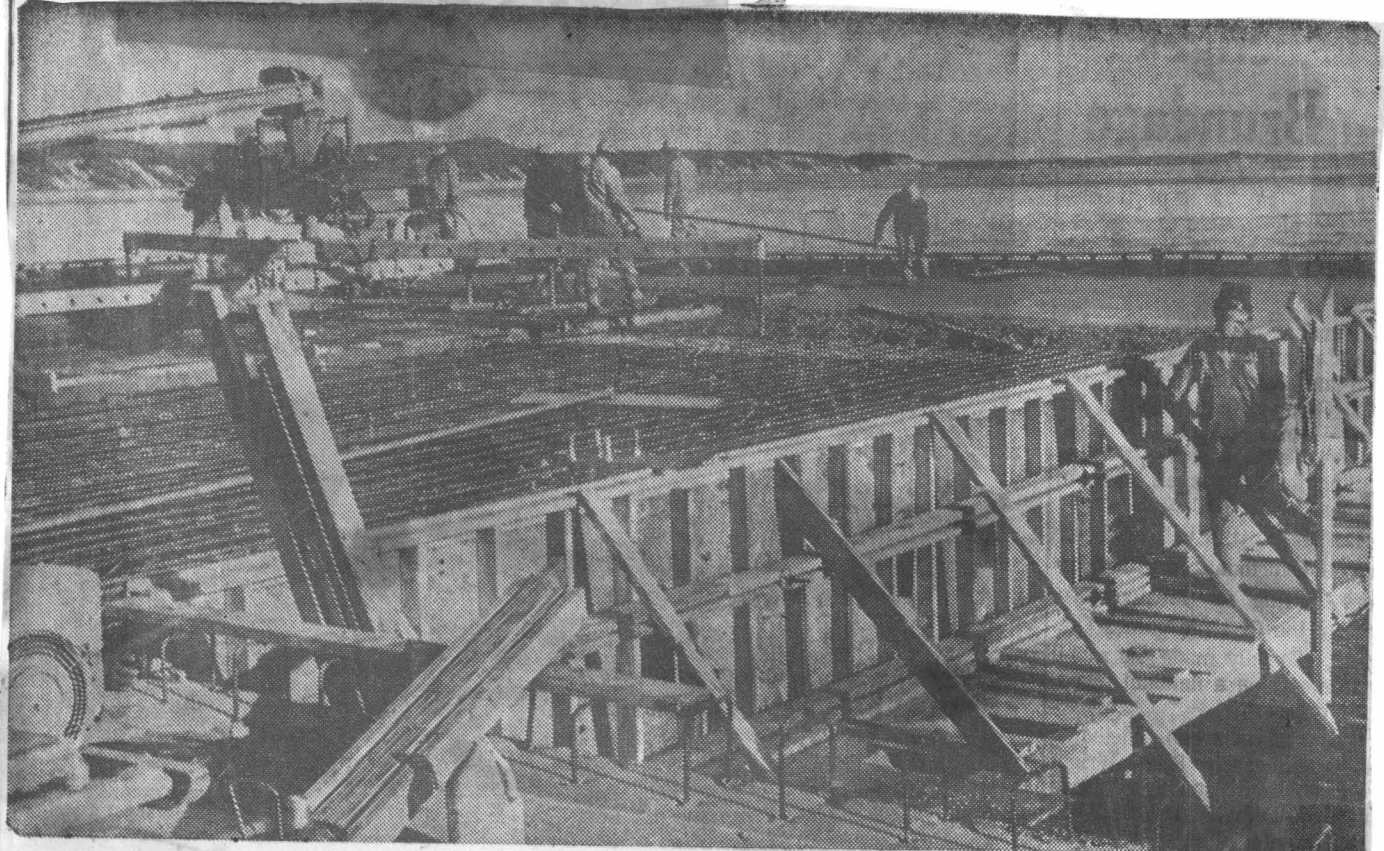
Anchorage Daily News, Monday, September 23, 1968. Newsphoto)

The 'Wickersham': Popular Attraction

Alaska's newest ferry, the M.V. Wickersham, has proved to be a popular attraction in Anchorage. Since it floated into the port early Saturday morning some 17,000 Anchorage residents have visited the mammoth vessel, including 12,322 on Sunday.

The luxury vessel will remain in Anchorage until Tuesday night when it will push off for Vancouver, B.C. The trip to Vancouver from Anchorage is available for \$150. For those who want to take their cars with them, the price is an extra \$150.

See Page 3 for a picture of the Wickersham docked in Anchorage Sunday.



FINAL CONCRETE POUR ON DOCK EXTENSION

Shown is the final pour of concrete on the dock facility. Phase I work on the 272-foot dock extension project at the Anchorage city port

extension project at the Anchorage city port extension is scheduled next month.