

### PORT EXTENSION PROJECT COMPLETED

Official completion of the Port of Anchorage dock extension project was signalled Monday with this ribbon-cutting ceremony. Prime contractor on the \$1.3 million job was the Morrison-Knudsen Co. Shown at the ribbon cutting are, from left: Russ

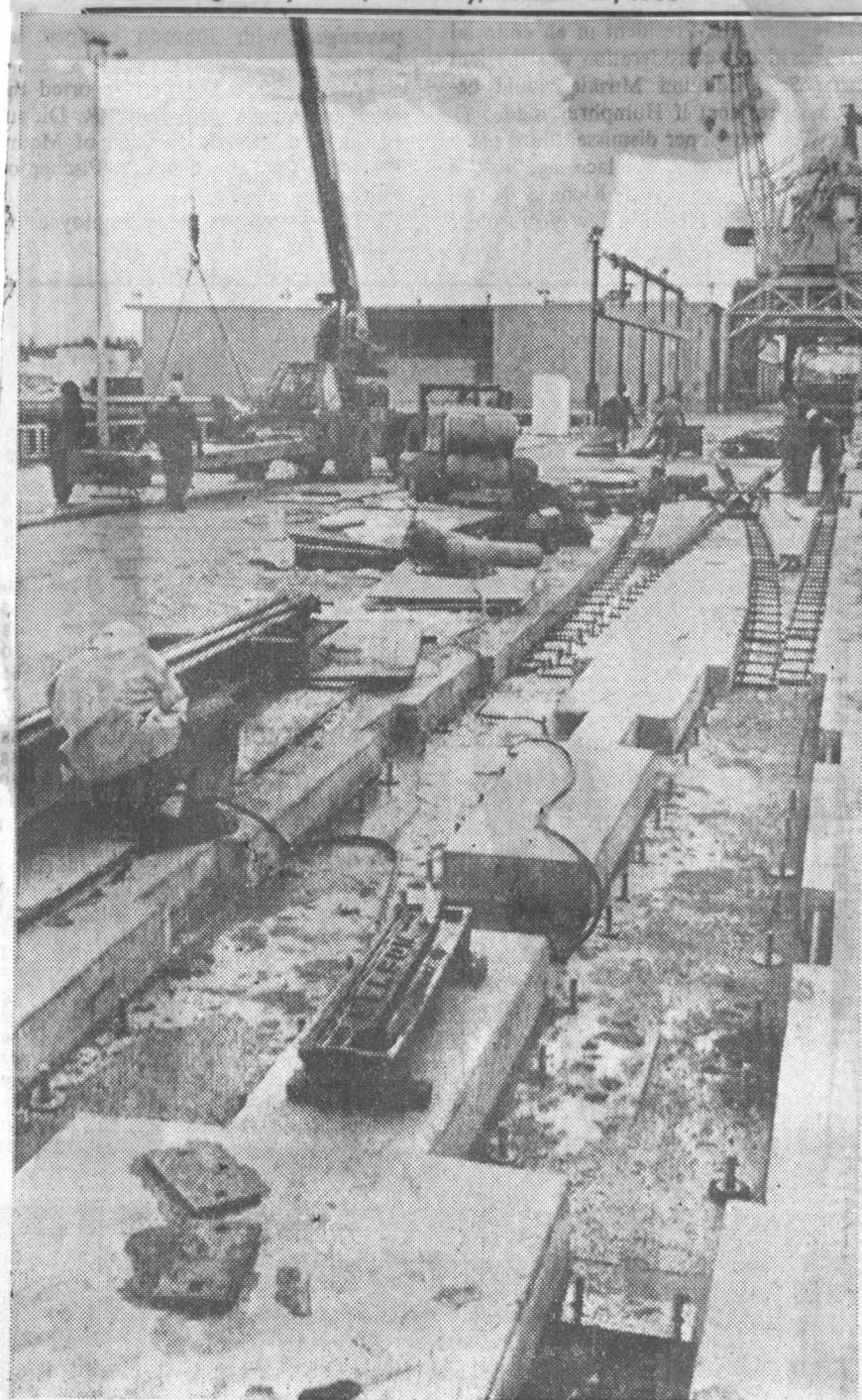
Painter, port manager; Robert Sharp, Anchorage city manager; Wallace Martens, port commission member; Arne Michaelsen, commission chairman; Mayor George Sullivan; and Dick Silberer and Bill Besser, city council members.



### THE WICKERSHAM AT THE PORT OF ANCHORAGE

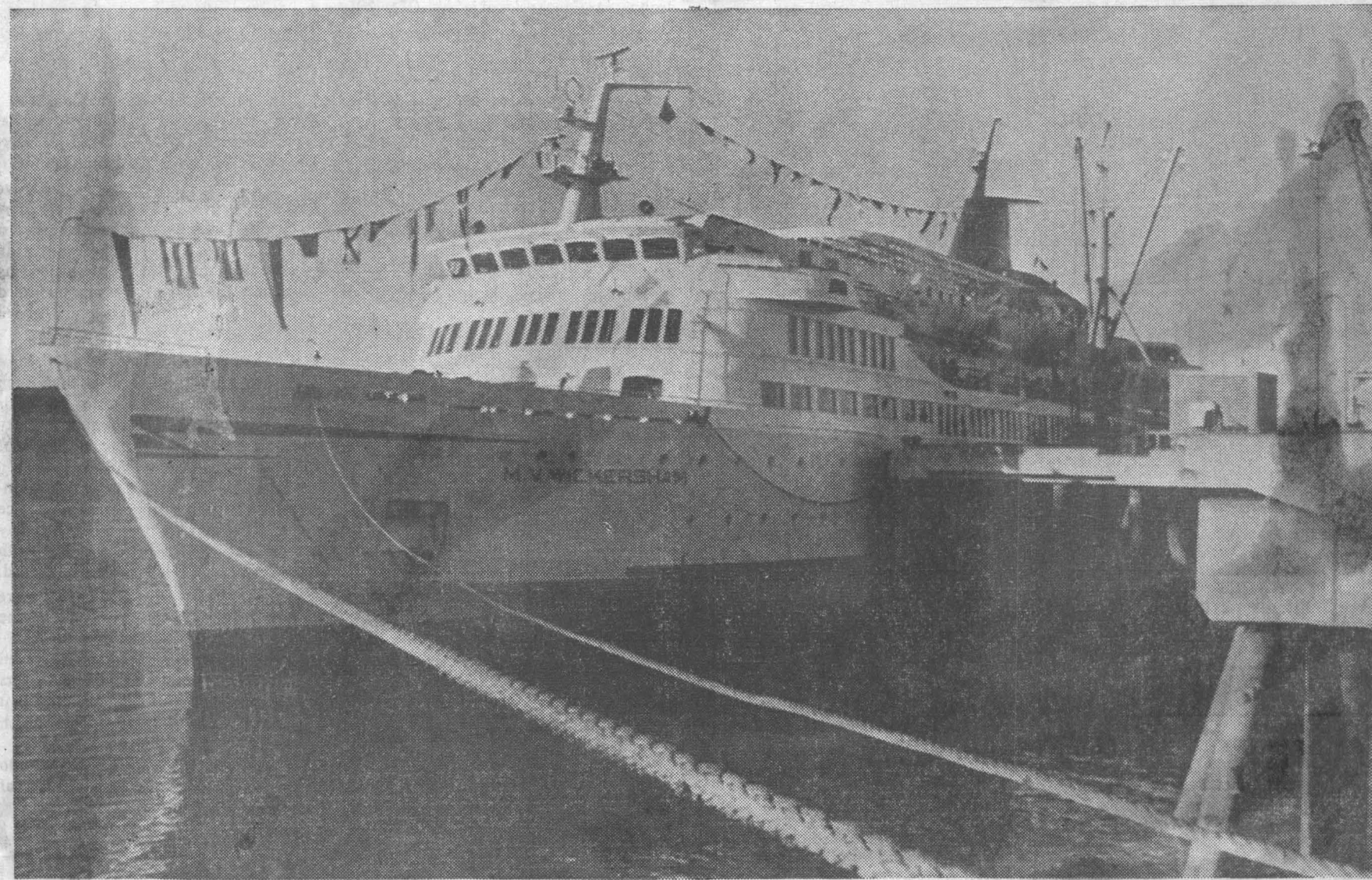
The state's newest — and most controversial — ferryliner lies berthed today at the city port after being docked at 4:45 a.m., some five hours ahead of schedule, to avert berthing problems that would have occurred later when the tide was lower. The vessel, which visited Kenai on the way here, will be in Anchor-

age four days. Open house is planned today until 7 p.m., then Sunday and Monday from 10 a.m. to 7 p.m., and Tuesday from 7 until 1 p.m. Visitors are asked to park downtown. Times Staff Photographer Don Cline took this aerial photo from aboard an Era Helicopters craft over the harbor.



**WORKMEN HURRY** to complete \$1.3 million extension to municipal dock. The project at the Port of Anchorage is in its final stages. It started in the spring. Morrison-Knudsen, a worldwide concern based in Idaho, is the prime contractor. (Daily Newsphoto)

## She's Leaving Us Today



**THE M.V. WICKERSHAM** — the state's so-called superferry — ends a four-day visit to Anchorage today. The last chance for visitors to climb aboard and inspect the newest Alaska ferry will be from 10 a.m. to 1 p.m. In the afternoon, there will be an inlet cruise for travel agents and local of-

officials. Then, the Wickersham leaves Anchorage this evening for Southeast Alaska and Vancouver, B.C. Monday, local residents continued to flock aboard the vessel. Many of the visitors were children on school field trips. Additional photographs are on Page 8. (Daily Newsphoto)

### Coast Guard to Post Navigational Warnings for the Port of Anchorage

Coast Guard officials in Alaska said Monday they will post navigational warnings about the possibility of tide changes at the Port of Anchorage and conduct investigation on the matter.

The study was proposed following hearings in Anchorage Saturday on the collision of the Standard Oil tanker Chevron Liege with the Anchorage petroleum dock.

No decision was reached on why the accident on Friday occurred. Officials said the most widely held theory is the tide changed about 400 feet from the dock.

### Dock Extension Is Completed

A brief ceremony Monday marked the official end of construction on the new \$1.3 million dock extension at the Port of Anchorage. The dock, built by Morrison-Knudsen Construction Co., was scheduled for completion Nov. 18.

The structure, which replaces the previous dock, damaged by ice in the 1966-67 winter, will be inspected and accepted within 10 days, according to Russell Painter, port manager.

"The engineers are here now to inspect it, but we're already using it," Painter said Monday. "The contractor cleared his equipment a couple of days ago and some boats that service the Phillips Oil Co., drilling rigs have been using it."

The structure was started 150 days ago, on June 1.