



#### LOTS OF HOSPITALITY FOR USS ANCHORAGE CREW

Free trips to Portage Glacier, Alyeska and Erickson's Mine are among the special events offered to crew members of the USS Anchorage during its visit this week to its namesake port. Members of the American Association of Retired Persons are serving as guides for the tour sponsored by the Armed Service YMCA. Shown, from left, are Mrs. Anna Hansen; Phil Broadbent, Kansas City, Mo.; Mrs. Kathryn Fiala, state director for the retired persons association; Rick Olson, Eugene, Ore., and Mrs. Margaret Brown. The ship departs tomorrow at 8 a.m.

Free trips to Portage Glacier, Alyeska and Erickson's Mine are among the special events offered to crew members of the USS Anchorage during its visit this week to its namesake port. Members of the American Association of Retired Persons are serving as guides for the tour sponsored by the Armed Service YMCA. Shown, from left, are Mrs. Anna Hansen; Phil Broadbent, Kansas City, Mo.; Mrs. Kathryn Fiala, state director for the retired persons association; Rick Olson, Eugene, Ore., and Mrs. Margaret Brown. The ship departs tomorrow at 8 a.m.

## Sailors Rate Port 'One Of Best'

By Bob Ortala and Lana Johnson  
Times Staff Writers

For the crew members of the USS Anchorage, their namesake town is shaping up to be one of the best liberty ports the men have been in.

"This is the best port we've pulled into," according to Seaman Dan McAdams, "and we've pulled into a lot of ports."

Boatswain's Mate 3.C. Gary Ruebush said the same thing, adding: "We're not used to it. Everybody's really nice."

The sailors recounted incidents of Anchorage people, all of them strangers, making the city's welcome felt among the crew.

"I was just walking down the road with some other guys and some dude picked us up and showed us around," said Seaman Jack White.

Sailors given tours of the city by local residents saw places like Earthquake Park, International Airport and Lake Hood, Alyeska and Portage Glacier.

While the people of Anchorage were giving the Navy men a tour of the city, the sailors were giving local residents a tour of the ship.

Tours of the Anchorage, the largest dock landing ship constructed, have been conducted daily. Buses, driven by volunteer members of the

American Association of Retired Persons, have shuttled thousands of Anchorage people to the ship.

"The guys are enjoying showing people on the tours," said McAdams.

Seaman John Nemier noted that the ship has never before had so many visitors.

The ship operates with one-sixth of its crew while in liberty port, with the other five-sixths out enjoying the town or resting in quarters. An exception to this is during the tours, when an additional

one-sixth of the crew stays on board to guide visitors.

Though many of the Anchorage's crew members praise Anchorage as their best liberty port, other members of the crew rank Anchorage high, but not the highest.

At a steak fry for 40 crewmen given last night at the Eagle River home of Ralph S. Shipman, the Australian city of Sydney came out on top as the best port for liberty, with Anchorage rated "second-friendliest."

Repulse Bay on Hong Kong

Island is the most beautiful, according to the sailors; Okinawa the most fun and Olongapo, Philippines, "the liberty port of the world."

And not every sailor was completely enamored of Anchorage.

"I don't like the place myself," said Seaman Appren. Robert Lewis. "Cost of living is too high for us."

Lewis also related his frustration after not being able to buy a bag of tortilla chips in a liquor store. "Gotta be 19 to buy a bag of chips," he complained.

Crew members cited incidents in which sailors were given free drinks or given their meals free at restaurants. Many were invited into local homes for Sunday dinner.

Tonight, the YMCA is sponsoring a dance for members of the crew in the ballroom of the Anchorage-Westward Hotel. Local single girls have been invited to attend the semi-formal event, which will be chaperoned.

The USS Anchorage will depart tomorrow morning and will probably not return for several years.

Crew members say that the ship will steam to its home port of San Diego, Calif., before being deployed for an eight-month tour of the Western Pacific.

## Port Chief B. J. Logan Says 'Access' Incorrect

Port Commissioner B. J. Logan says state highway officials are wrong in naming their proposed highway the "port-access road" because it will not benefit the port.

"The prime business of a port is moving its cargo in and out of the port as quickly as possible," Logan said. "This road will not do that, but will only increase traffic congestion in the port area."

Logan said the proposed highway will really serve Elmendorf Air Force Base.

Port Commission Chairman Arne Michaelson agreed with Logan and said he and Port Director Erwin Davis had to testify at hearings in order to get a special ramp leading to the port so that the heavy truck traffic would not be tied to traffic lights.

Logan said he will push for a Knik Arm crossing at Cairn Point as an avenue for expediting the flow of goods to and from the port.

"In the past the highway department has said the ground at Cairn Point is not stable enough for a bridge, but that just doesn't hold true when oil companies can put their huge oil rigs on the same kind of rubble," he said. "The oil firms have solved the problem by putting in a concrete pad under the rigs."

He said a crossing at Cairn Point would cut off many miles of travel to Fairbanks and open up the lake country to year-round activity.

In other business the port commission Monday gave formal approval to the 1972-77 capital improvements program which includes a \$7 million expansion program to meet the projected needs of the port.

According to a study by Tippetts, Abbott, McCarthy and Stratton, the 1975 tonnage at the port will increase to an estimated 810,000 tons.

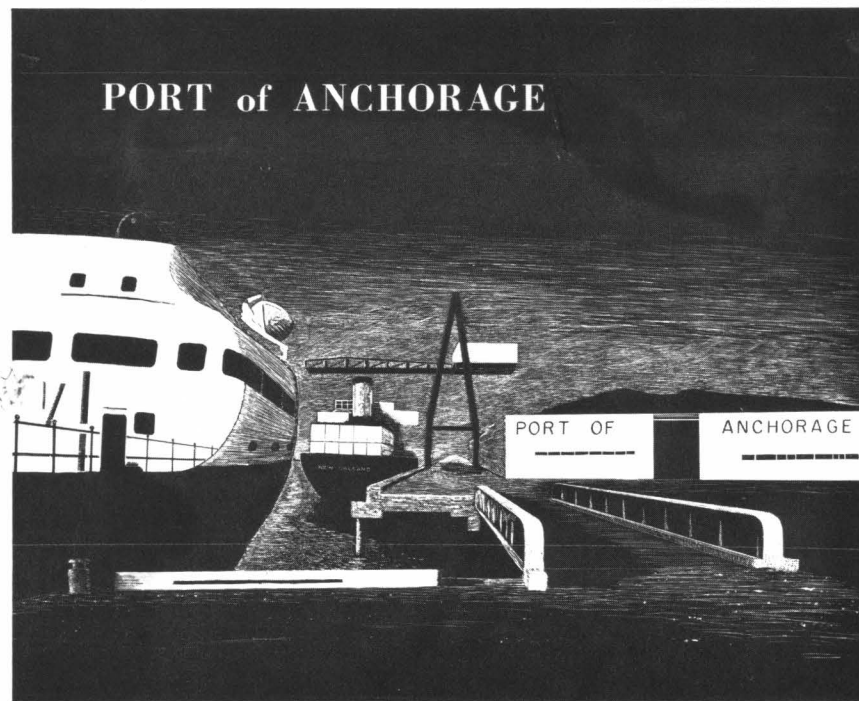
The capital improvements program calls for the construction of a third dry-cargo berthing facility and a petroleum, oil and lubricants terminal to the south of the present facility.

In addition the study indicates the need for backup lands to support the new terminals. Preliminary engineering studies show that 33.7 acres of suitable lands may be developed to the east of the port. The cost of filling and rock, riprap protection is

estimated at \$2.2 million.

The city is seeking federal funding from the Economic Development Agency for these projects. Their application is currently

pending with the agency. City officials said they will postpone any bond referendum to fund the expansion until federal funds are assured.



## ALASKA'S LARGEST PORT

- Containerized Service
- General Cargo
- Petroleum
- Bulk



PORT OF ANCHORAGE  
2000 ANCHORAGE PORT ROAD  
ANCHORAGE, ALASKA 99501  
TELEPHONE: 907-272-1531

ALASKA INDUSTRY October/1971 65

#### PORT OF ANCHORAGE

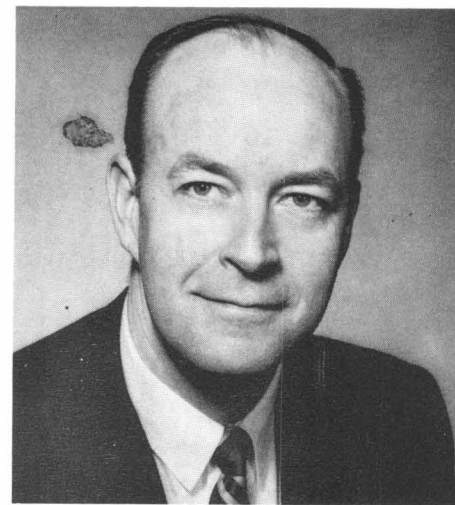
Alaska  
Headquarters of Customs District of Anchorage—Region VIII (San Francisco)

#### GREATER ANCHORAGE CHAMBER OF COMMERCE

612 F. Street  
Claire O. Banks, Executive Director

#### PORT OF ANCHORAGE—Continued

2000 Anchorage Port Rd., (99501)  
E. Erwin Davis, Port Director



E. Erwin Davis (Anchorage)

## Extra-Large Vessel Brings Containers To Port Here Today

The SS Elizabethport docked at the Port of Anchorage at 5:30 this morning, making the giant Sea-Land vessel the second to reach Alaska after the record West Coast dock strike was broken by a federal-back to work order.

The ship carries twice the containerized cargo load of the SS Afoundria, a regular on the Alaska run, and Anchorage longshoremen began unloading the ship's cargo of 550 containers at seven a.m. The Elizabethport is scheduled to make three more trips to Alaska this fall, to allow retailers and others to replenish their post-strike inventories.



#### MT. MCKINLEY CAUGHT IN RIBBON OF SUNSHINE

Gib Aulabaugh caught this unusual view of Mt. McKinley from Government Hill. North America's highest peak had but a midsection visible in the sunset beneath a cloudy sky as darkness moved in on the city. Aulabaugh said he had his

lens "almost wide open" and allowed an eighth of a second for the exposure. He used his Mamiya 500TL camera with a Sears 200 millimeter 3.5 lens.



#### FIRST SINCE THE STRIKE

The Sea-Land vessel S.S. Galveston arrived at the Port of Anchorage early this morning, the first general cargo vessel to touch here since the 101-day longshoremen's strike began July 1. The vessel carried 360 cargo containers, which were rap-

idly changing places with empty containers as stevedores worked on the docks this morning. The S.S. Afoundria, another Sea-Land vessel, is scheduled to arrive here Oct. 27 with 275 containers.