



### THE LAST LOAD FOR A WHILE

Sea-Land's S.S. Galveston steamed into Anchorage this morning, the ice of Cook Inlet posing no problem for the container freighter. The ship will be Sea-Land's last until the West Coast dock strike is resolved by longshoremen and shippers or by the federal government which has threatened to step in and

settle the strike. The Galveston carries a full load, 360 containers, of general cargo, foodstuffs and some new automobiles. The ship left Seattle less than 24 hours before the longshoremen set up their picket lines in ports from Seattle to San Diego.



A public open house will be held aboard the Coast Guard Cutter Burton Island Tuesday from 1 to 5 p.m. at the Port of Anchorage. The 269-foot icebreaker, commanded by Capt. George Schmidt and carrying a crew of 250 men, will arrive in Anchorage this afternoon. The Burton Island's visit is included in a two-month cruise which will take it through Cook Inlet and into areas of the Bering Sea for a marine mammal survey. An 11-man party of scientists is aboard for the study.



### GETTING READY

Crewmen on board the Coast Guard Cutter Burton Island haul out a helicopter in preparation for their "open boat" from 1-5 p.m. tomorrow in the Port of Anchorage.

## Coast Guard Vessels Dock Here, Schedule Open House

Two Coast Guard vessels are in port here this week as a special attraction for the Fur Rendezvous.

There will be an open house on the cutter Burton Island from 1 to 5 p.m. tomorrow. The 269-foot icebreaker is commanded by Capt. George Schmidt and carries a crew of about 250 guardsmen. The vessel is homeported in Long Beach, Calif.

Also in port is the 180-foot, buoy tender, Citrus from the port of Kodiak. It carries a crew of about 50 men whose prime duty is to service navigational aids such as buoy markers. The vessel's crew also performs some fisheries patrol activities.

The Burton Island's visit is part of a two month tour of the Cook Inlet waters and the Bering Sea during which the

ship's crew will do a marine mammal survey.

An 11-man party of scientists and technicians is on



J. M. FOURNIER  
Executive Officer



GEORGE SCHMIDT  
Captain Of Icebreaker

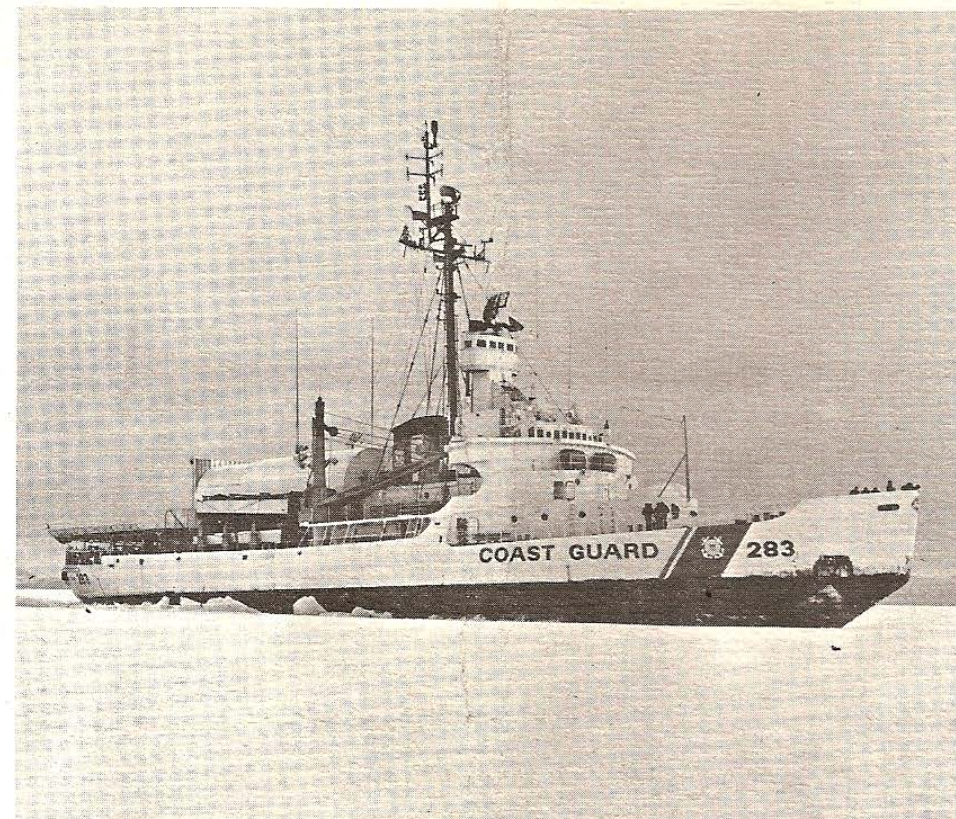
board for the survey.

In addition to the mammal survey the crew will conduct a trafficability study to determine the type of icebreakers needed to operate successfully in ice conditions peculiar to this area. This is the second such study done in Cook Inlet by the Burton Island.

Cmdr. J. M. Fournier is the executive officer of the vessel. Tomorrow night, he will host a private dinner party for 15 aboard the ship. No guest list has been announced.

Open house on the Citrus will be from 1 to 3 p.m. Tuesday through Saturday.

## WELCOME ABOARD

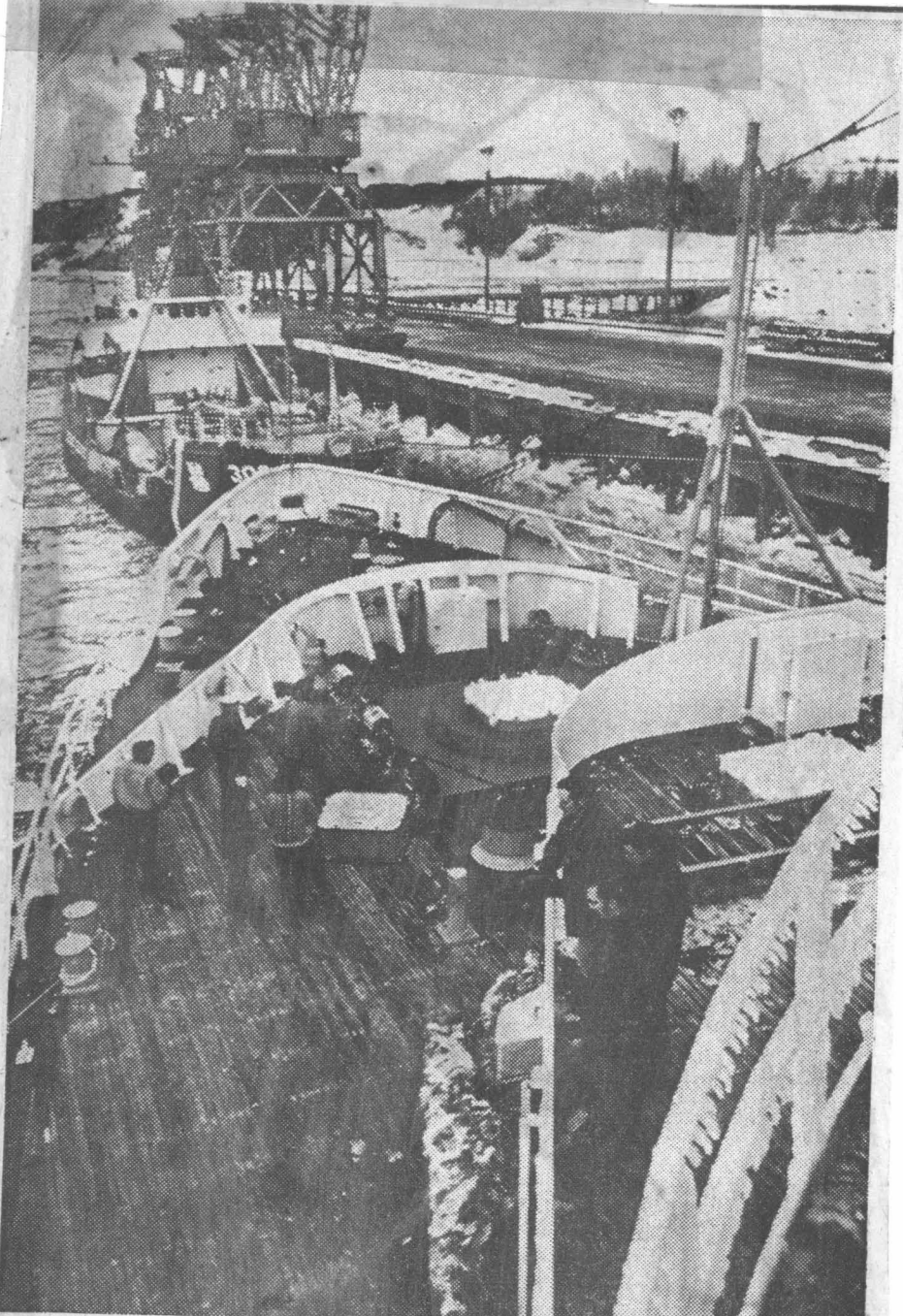


### COAST GUARD ICEBREAKER

*Burton Island*

WAGB-283

Brochure continued on following page.



Daily News photo: Henry Rock

Visitors explored two Coast Guard vessels docked at the Port of Anchorage for Fur Rendezvous Tuesday. The 269-foot icebreaker Burton Island will be tied up next to the 180-foot buoy tender Citrus until Sunday, and admirers are welcome aboard from 1 to 5 p.m. every afternoon. The Burton Island, whose home port is Long Beach, Calif., is in these parts for a two-month tour of Cook Inlet and the Bering Sea for a marine mammal survey. The tender, from Kodiak, takes care of navigational aids such as buoy markers. More on Rondo, Page 2.

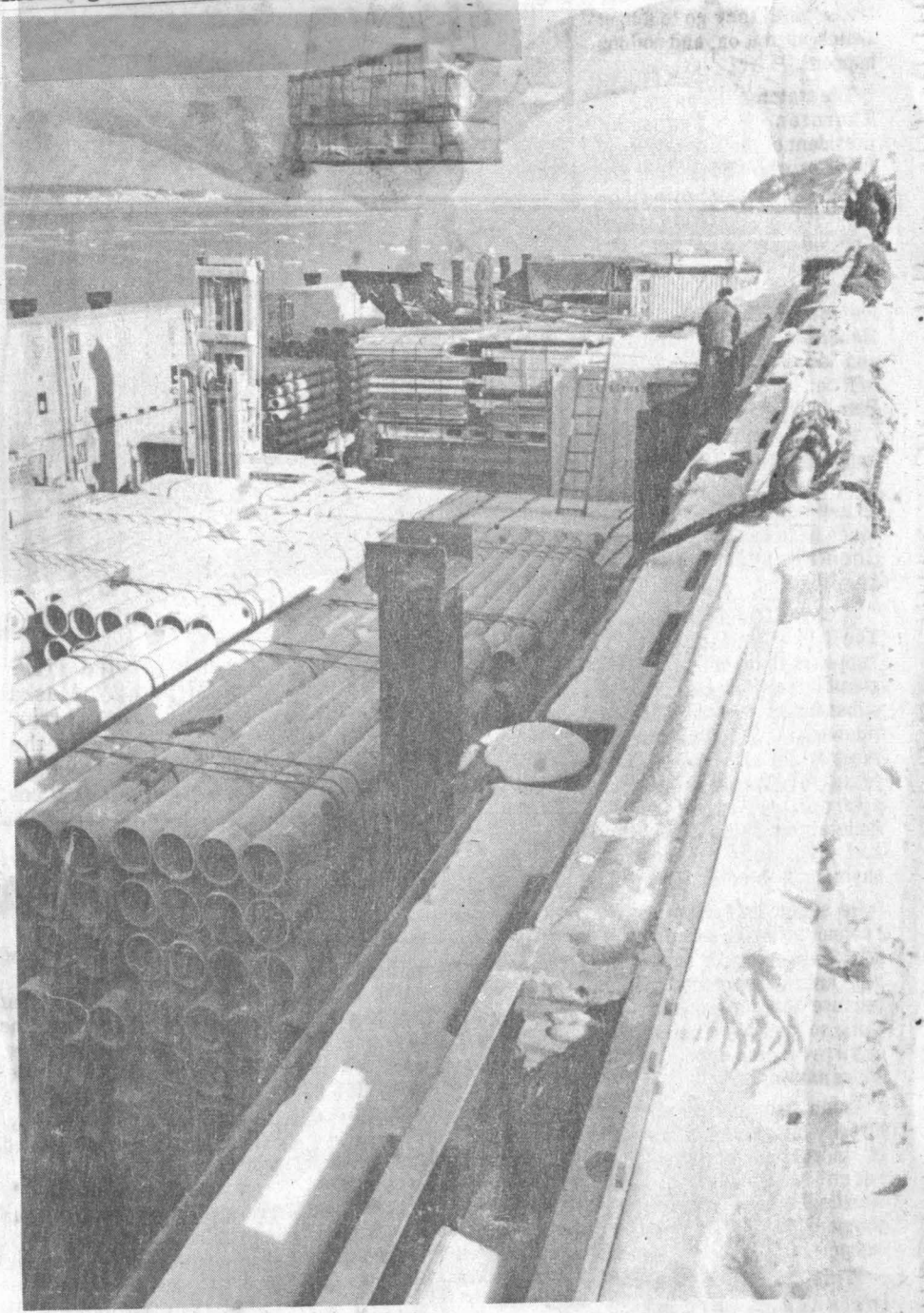
### Two Firms Repair Damage At Port Done By Tanker

Damage done by a Standard Oil Co. Tanker to the petroleum dock at the Port of Anchorage has been temporarily repaired.

The tanker damaged a catwalk and tore up power lines earlier this month.

Proposals for repair of the catwalk were submitted by Steel Fabricators at \$5,680 and by J. R. Clinton Co. at \$3,000. Clinton was awarded the contract.

The installation of temporary power facilities was awarded to Gustav Hirsch Organization for \$1,600.



Unloading Season's First Barge

## Northland Marine Barge Makes Call

Whether the Snow King likes it or not, spring is here, and that's the truth. To evidence this occurrence is the arrival last weekend of the first barge of the season.

Pulled by the tug Arthur S. the Northland Marine Lines barge came into port with a cargo of pipe, lumber, machinery and general goods. It will return to Seattle this week.

Skipper of the tug, Capt. Winkie Walker, reported the inlet is icy from Ninilchik to Fire Island, but passage was not too rough.

His arrival will be followed later this week by three barges of the Pacific Western Lines which are currently en route in the lower part of the inlet.

Icy conditions did cause Sea Land to dock one of its vessels in Seward as a precautionary measure rather than risk

damage, according to Edward Dunva, terminal manager for Anchorage.

The general cargo will be worked in Seward and forwarded by rail.

Other docking to occur this month include the following: Tesoro barge 17, which arrived yesterday from Nikiski with petroleum products, and due again on the 13th;

Seal Land's Summit arriving April 19 from Seattle with general cargo;

Tosei Maru of the Japanese North Star line due in April 20 from Japan;

Shell Oil's Varicella due to arrive April 21 from Cardon, British West Indies.

Sea Land Galveston and Mobile arriving April 23 and 26 from Seattle, and

Tagu Maru arriving May 1 from Japan.