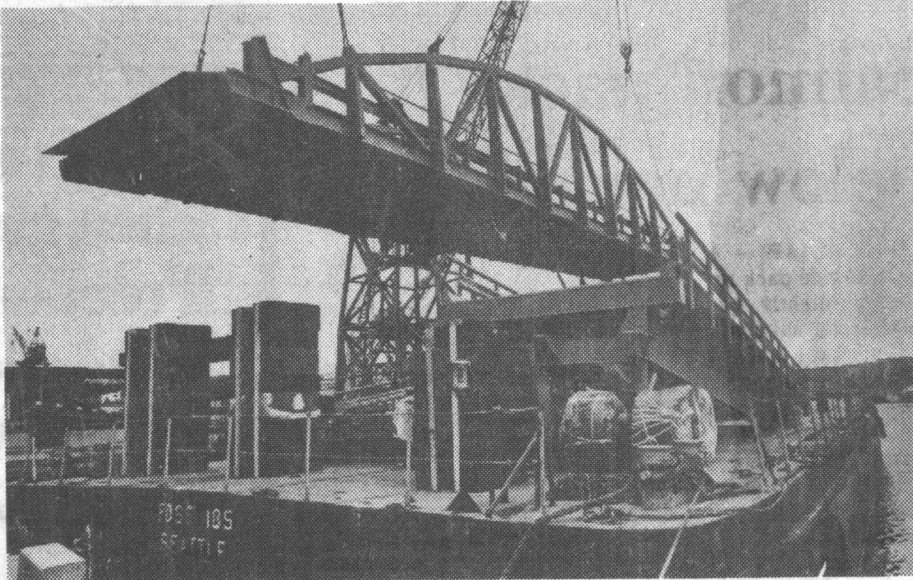


SS Great Land leaves Delaware shipyard, bound for Seattle.

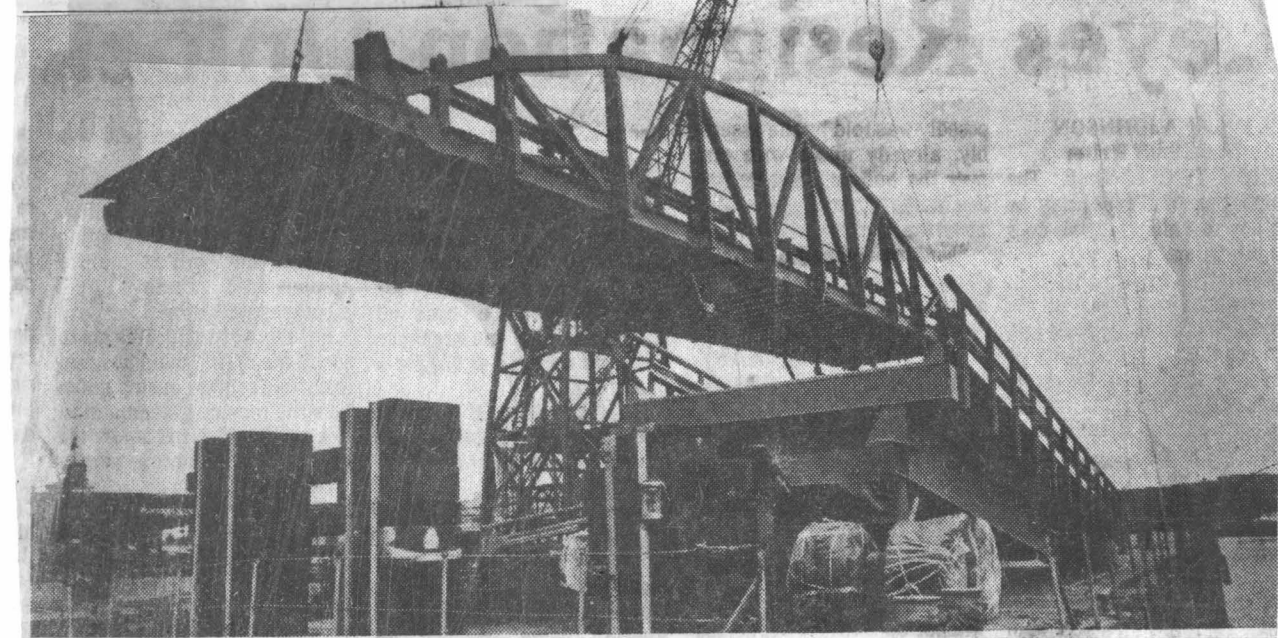
TOTE ship steaming to Seattle

The SS Great Land, which will provide roll-on, roll off freight service between Seattle and Anchorage, is on its way to Seattle for final fitting. Ramps will be used to connect ship with pier at Port of Anchorage. Ship is owned by Totem Ocean Trailer Express, Inc. (TOTE).



Ramps will be used to unload Great Land in Anchorage.

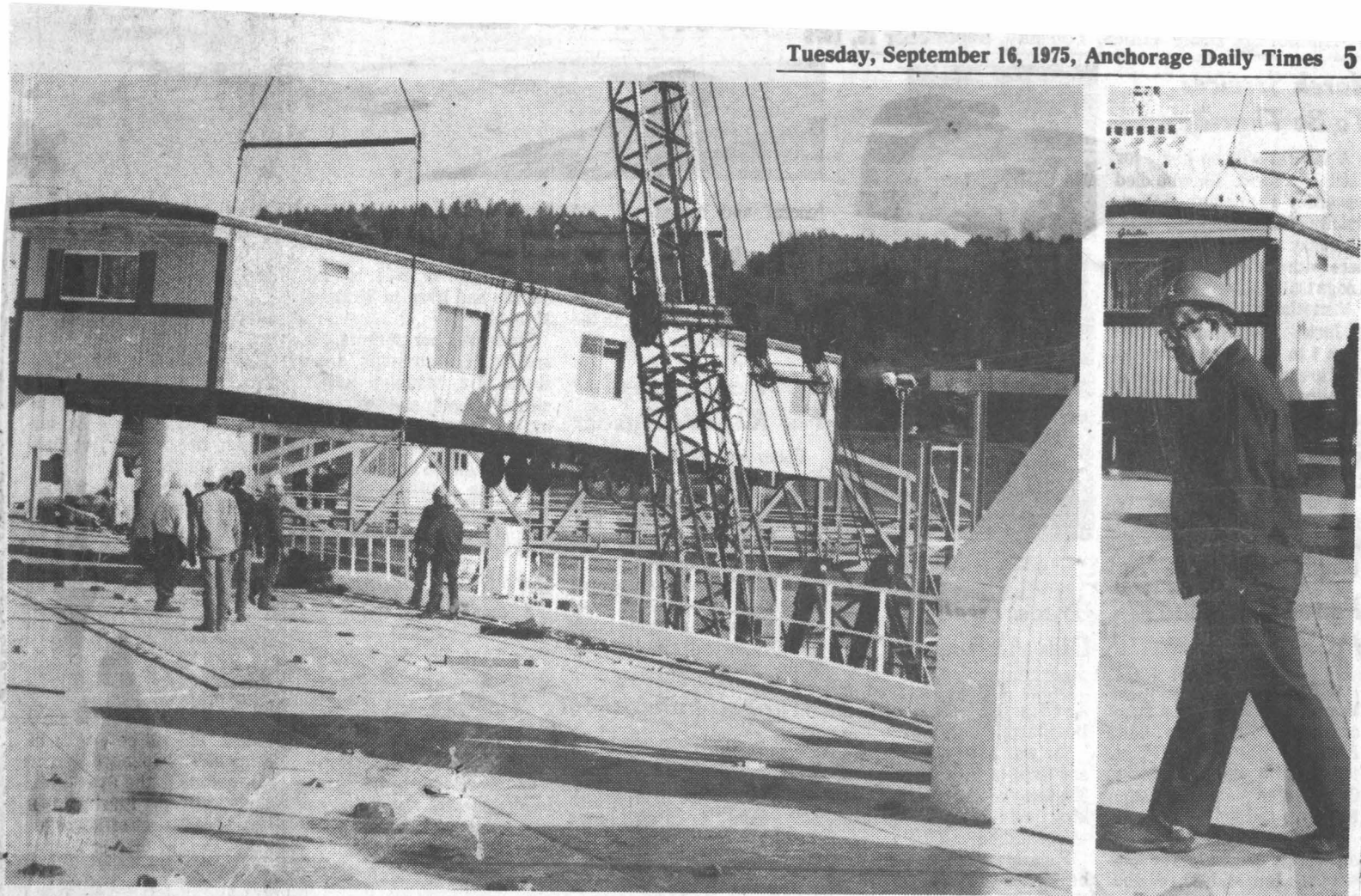
September 7, 1975, Anchorage Sunday Times



RAMPS TO LINK TRAINSHIP, PIER

With the 790-foot trailership, Great Land, to begin service to Alaska soon, three ship-to-shore ramps have been shipped here aboard a Foss Launch and Tug Co., barge for move of cargo between the huge vessel and the city dock. The ramp being loaded here in Seattle is one of the three, two measuring 294 feet and the third 235 feet long, built by Lockheed Shipbuilding

under contract to Sun Shipbuilding, builders of the Great Land. The Great Land is to go into service shortly from Seattle, where it is to have its final fitting out period after sailing from the East Coast via the Panama Canal. The Great Land will be operated by Totem Ocean Trailer Express, Inc., a subsidiary of Sun Shipbuilding and Dry Dock Co.



NEW SHIPS UNLOADS IN PORT

A Totem Sun ship unloads in Anchorage harbor showing off some new features designed to make shipping more attractive to importers. At left, a crane lifts away a long mobile home which will be placed on a truck bed. At right, Russ Painter,

operations manager for Totem Sun Ship, walks, across the dock to inspect the mobile home before it is pulled away from the ship by a trailer truck.



FASTEST SHIPPING SERVICE TO ALASKA with The World's Largest Roll-on/Roll-off Trailership S.S. GREAT LAND

Sails Seattle	Arrives Anchorage	Sails Anchorage	Arrives Seattle
Tuesday, September 9 Thursday, September 18 Friday, September 26	Saturday, September 13 Sunday, September 21 Monday, September 29	Sunday, September 14 Tuesday, September 23 Tuesday, September 30	Wednesday, September 17 Friday, September 26 Thursday, October 2

TRAILERSHIP SERVICE FEATURES

- Capacity equivalent
- 386 Trailers
- 126 Autos
- Reefer Capability
- LTL Service
- Insurance Included

CARGO CARRYING CAPACITY INCLUDES

- High Cube Vans
- Flat Beds
- Low Boys
- Furniture Vans
- Open Tops
- Extra Length Cargo...Steel Pipes
- Mobile Homes
- Chemical Tankers
- Autos

"TOTE IT TO ALASKA"

Seattle (206) 628-4320
Pier 37
1201 Alaskan Way South
Seattle, Washington 98134

Anchorage (907) 278-4685
Plaza 201, Suite 206
Third and Barrow Streets
Anchorage, Alaska 99503

TOTEM OCEAN TRAILER EXPRESS, INC.

Anchorage Times 9-11-75

New Freight Service

AHOY, GREAT LAND

A NEW SHIP is due in the Port of Anchorage tomorrow, the S.S. Great Land.

The 791-foot vessel, by far the largest ship scheduled to operate here on a regular basis, is making its maiden voyage to inaugurate a new shipping service between Seattle and Anchorage.

The new venture flies the colors of Totem Ocean Trailer Express, or Tote, for short. It will be in direct, head-to-head competition against Sea-Land Services, which maintains containerized cargo operations between the two cities, and against various barge operations in the general cargo field.

The plans for the new service, naturally enough, are causing ripples of opposition from competitors and a good deal of interest from potential customers.

THE SERVICE to be offered by Tote and by the Great Land differs from that now available. In the trade, it's known as roll-on, roll-off because it utilizes over-the-road transportation equipment. In essence, it means such things as semi-trailer vans on wheels will be rolled aboard the vessel in Seattle and rolled off in Anchorage for direct delivery by contract drivers.

Preliminary plans call for a Friday sailing from Seattle and a Monday delivery in Anchorage and use of expanded facilities at the

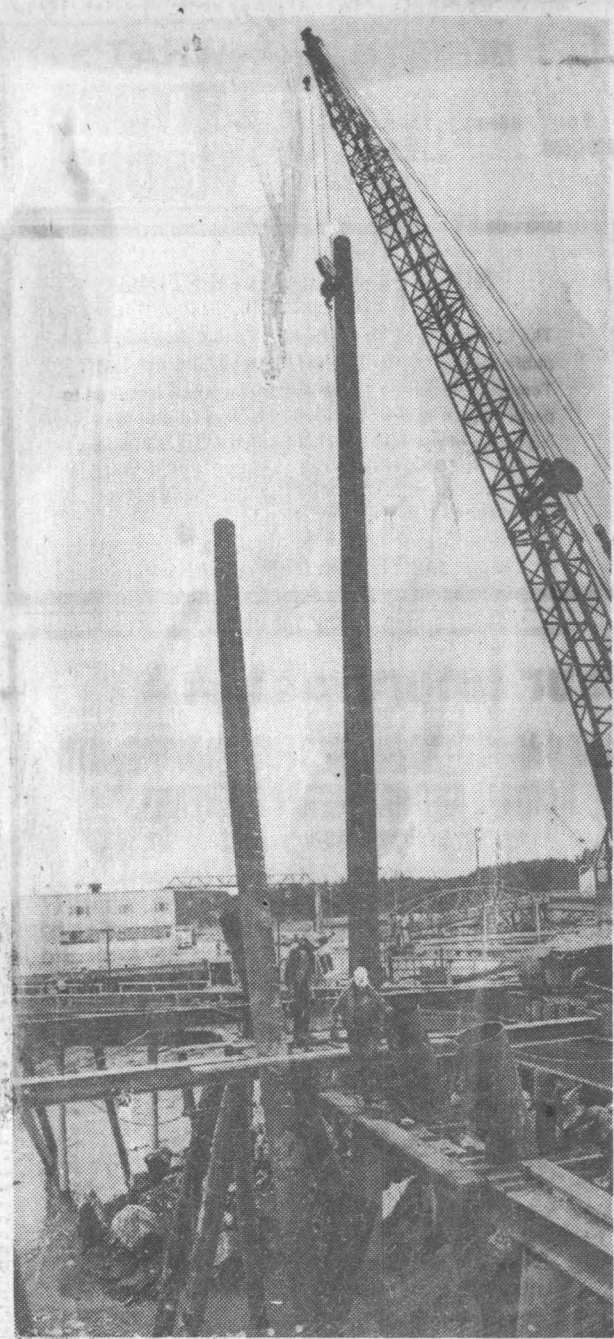
port here to handle unloading operations of the huge ship.

But some problems still remain for Tote, even though regular scheduling is going to proceed. The difficulty is over preferential berthing rights at the Port of Anchorage.

THE FEDERAL Maritime Commission must ultimately rule on the preferential berthing arrangements. Sea-Land has this right to the dock facility it uses at the port, and Tote's application is for other terminal space which will not, in the city's view, interfere with Sea-Land operations.

Competing shippers have intervened in protest to the Tote application, however. Unless preferential berthing is approved, under Federal Maritime regulations the S.S. Great Land would have to be assessed tariffs which apply to transient vessels — even though it operates on a regularly scheduled basis. With preferential berthing, it will be able to enjoy the same berthing fees charged Sea-Land.

From a civic standpoint, the community should offer Tote its support. Just as it is in the interests of the city to encourage and assist in any expansion of airline services here, the city should welcome sound expansion of its ocean shipping services.



Daily News photo by Neal Menachel

Tote Dock

The newest docking facility in the Port of Anchorage will be this trestle constructed by Totem Ocean Trailer Express to accommodate their new 790-foot freighter which will begin serving the city this weekend.

Anchorage Times 9-13-75



Ship Makes Late-Night Debut In Anchorage

SS Great Land Arrives Here

The SS Great Land made its maiden voyage into Anchorage last night, and the ship's owners hope to begin weekly service between Anchorage and Seattle by the end of this month.

Owner by Totem Ocean Express Inc., the vessel made its inaugural berthing at the city port yesterday at about 10 p.m., carrying a load of mobile homes, flat bed trucks and road trailers.

The 790-foot vessel will make weekly runs between the local port and Seattle, usually arriving here on Mondays, following a Friday departure from Seattle.