

The album



The largest ship to come to port here to date has the added advantage of rolling cargo on and off the vessel without the use of specialized equipment.



The S.S. Great Land, owned by Totem Ocean Trailer Express Inc.

New 'face' at the port

When the S.S. Great Land docked at the Port of Anchorage a week ago Friday, it set a size record — at 790 feet, it is the largest ship to come to port here to date.

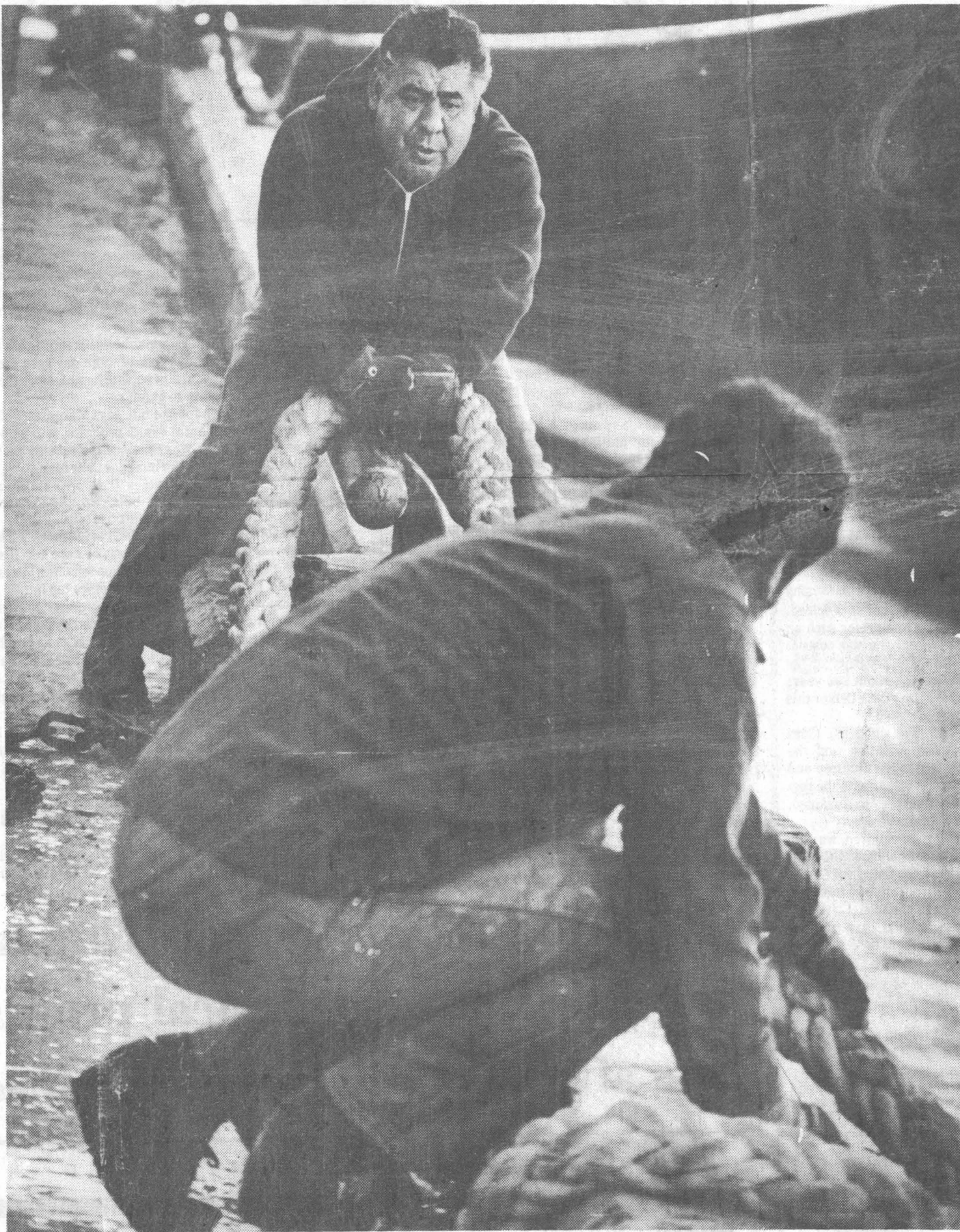
The trailership, owned by Totem Ocean Trailer Express, Inc., (TOTE) is capable of carrying the equivalent of 390 40-foot trailers and 126 automobiles.

While Totem plans to begin weekly cargo service between Anchorage and Seattle, a controversy over berthing arrangements at the Port of Anchorage is holding up regularly scheduled service.

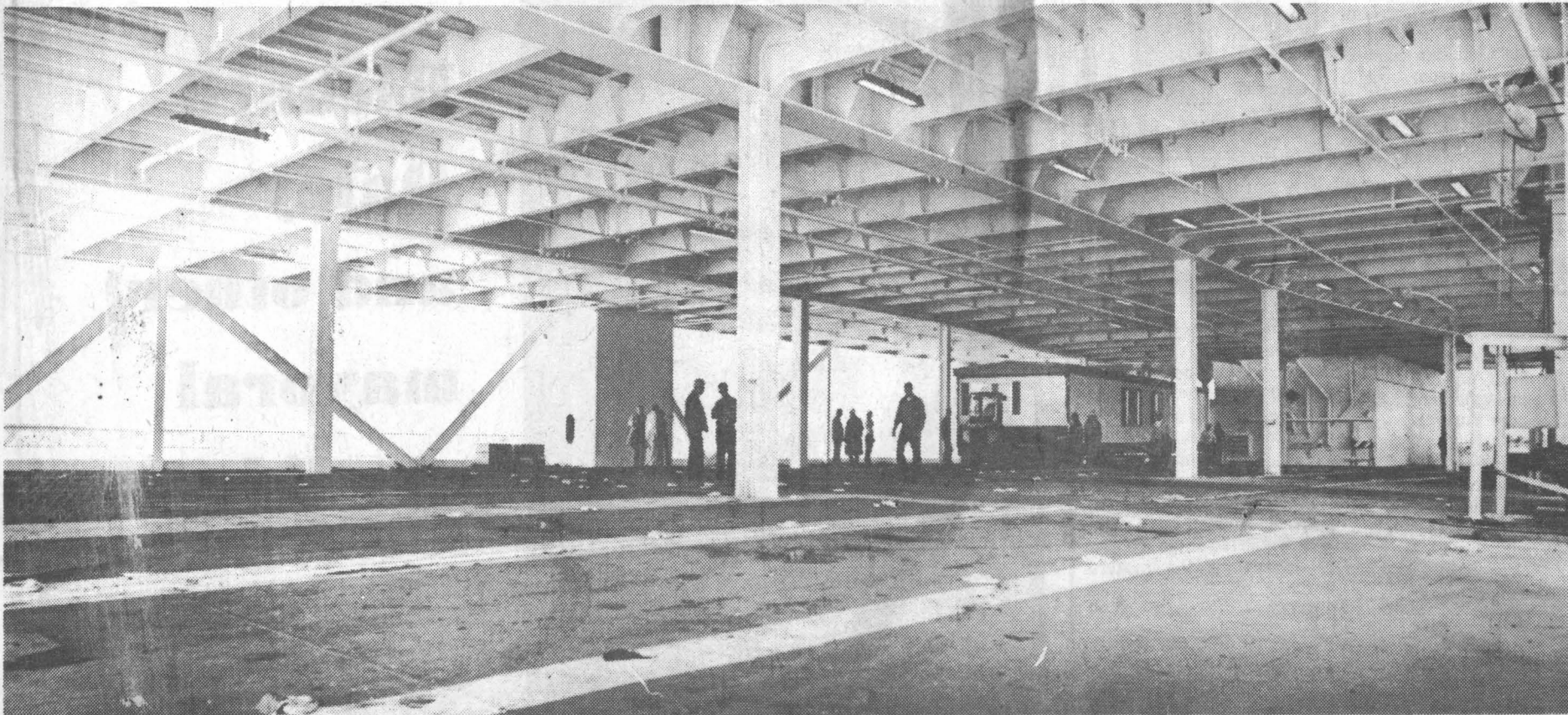
Protests have been lodged with the Federal Maritime Commission by two Totem competitors, Sea-Land and coastal Barge Lines, and also by Standard Oil of California, a user of the city's petroleum dock. Standard Oil contends the petroleum dock may be congested if the Great Land is allowed to use it.

But when the problems are solved, Totem believes it will provide the fastest shipping service available to Alaska, with the added advantage of rolling cargo on and off the vessel without the use of specialized marine transportation equipment. The ship is scheduled to return to Anchorage Sunday.

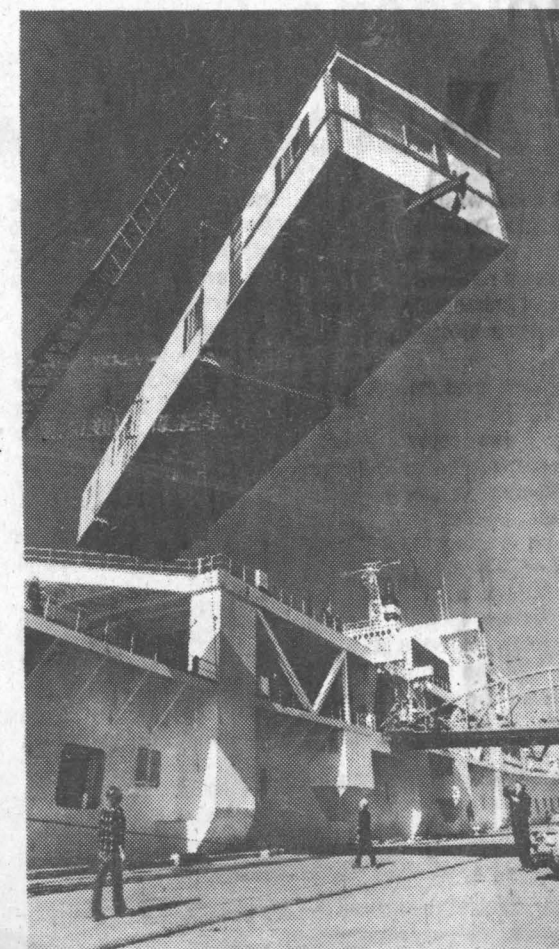
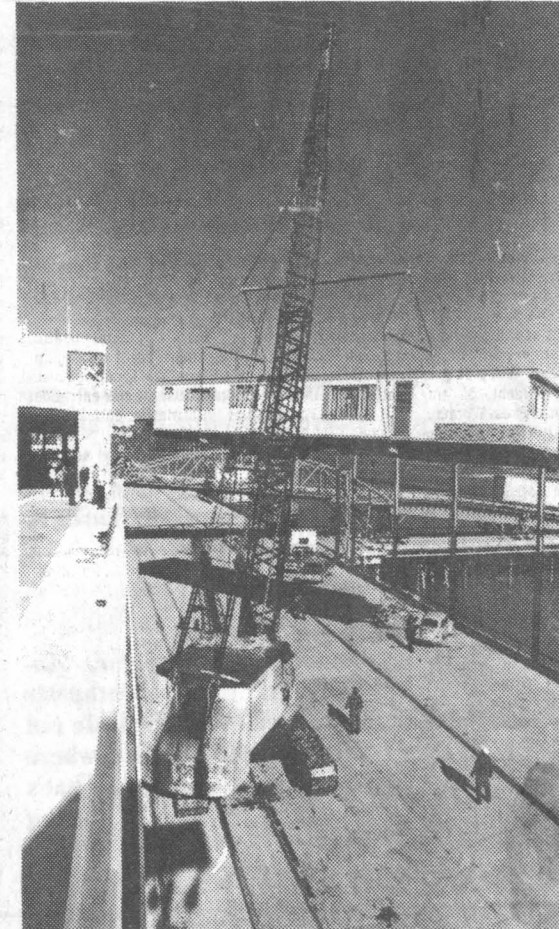
Photos by Neal Menschel



Dock workers tie up the TOTE vessel with heavy rope.



The trailership is capable of carrying the equivalent of 390 40-foot trailers and 126 automobiles.



Containers full of construction materials, food products, vehicles and mobile homes were brought to Anchorage on the Great Land's maiden voyage.

Shell Oil Suit Asks Rent Decreased

Shell Oil Co. is suing Anchorage for raising its rent on about 10 acres the firm leases at the Port of Anchorage for fuel storage.

In a suit filed in U.S. District Court, the oil firm claims its rent was wrongfully raised from about \$12,000 per year to \$59,600 in 1972.

The rent on the acreage the city leased to Shell in 1962 was for unimproved land in an area the municipality wanted to develop as part of the port. It was based on a formula of about 2.6 cents per square foot per year. The present rent is based on eight per cent of an appraised "fair market value" of the tank farm parcel.

Shell says the original lease does not authorize a rent hike at the end of either the first decade of the agreement or for the eight succeeding five-year lease renewal option periods. A raise based on the unimproved value of the land and increased only by a three-man panel of arbiters is permitted, the complaint contends.

The suit also says Shell improved the property with a \$687,000 investment to pay for excavation and land fill for the tank farm site and the company shouldn't be penalized for that improvement. The original lease says those

improvements can be undone or removed when Shell leaves or its lease expires.

Though the lease contains the arbitration section to take care of rent hikes for the port property, Shell's complaint says it does not apply in this case because the city's action was not within the terms of the lease, so it was contrary to the terms of the original agreement.

Shell's first 10-year period of the lease expired two years ago. The suit says Shell has been paying its rent and performing to the lease terms.



RUDDLE IRIZARRY Brings Experience

Totem Adds Extra Chief

A trailership line to begin serving Alaska late this month has named Ruddle E. Irizarry as vice president of operations in Seattle.

According to a news release from Totem Ocean Trailer Express Inc. the appointment was announced by president William Maling. Irizarry is a veteran in the business, the release said.

His background includes eight years as a director of operations for Transamerican Trailer Transport, where he established trailership service between New York and San Juan, P.R., the release said.

Born in Toa Baja, P.R., Irizarry attended the University of Puerto Rico School of agriculture and Mechanical Arts and the George Washington University school of business in Washington, D.C.

He is married with three children and three grandchildren.