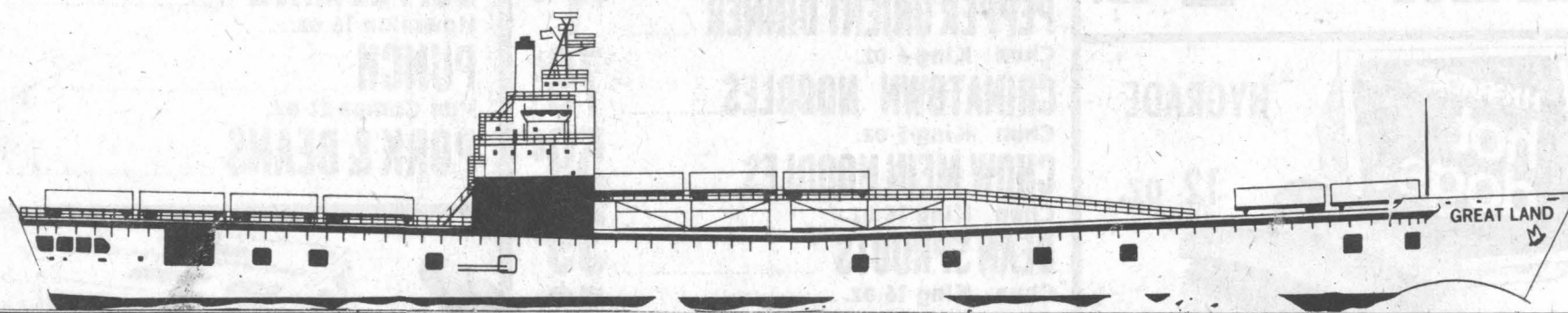


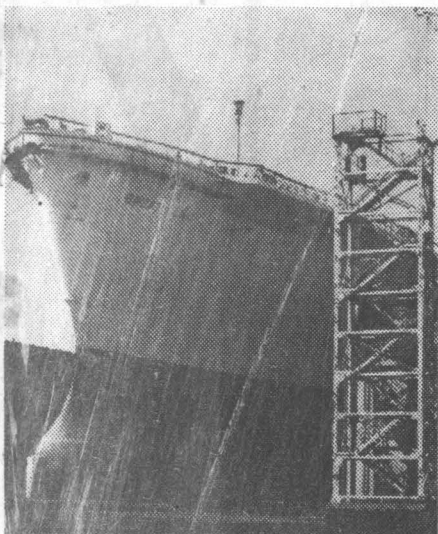
# ALASKA, YOUR SHIP IS ON ITS WAY

THE S.S. GREAT LAND LEFT PENNSYLVANIA ON AUGUST 24.



## ARRIVAL EXPECTED IN SEATTLE DURING THE FIRST WEEK IN SEPTEMBER

The voyage to the west coast through the Panama Canal is expected to take 12 days. We need some brief final fitting out time after arrival in Seattle. The S.S. Great Land will load cargo for her maiden voyage and then...Alaska!



## FEDERAL DECISION ON BERTHING IN ANCHORAGE EXPECTED THIS WEEK

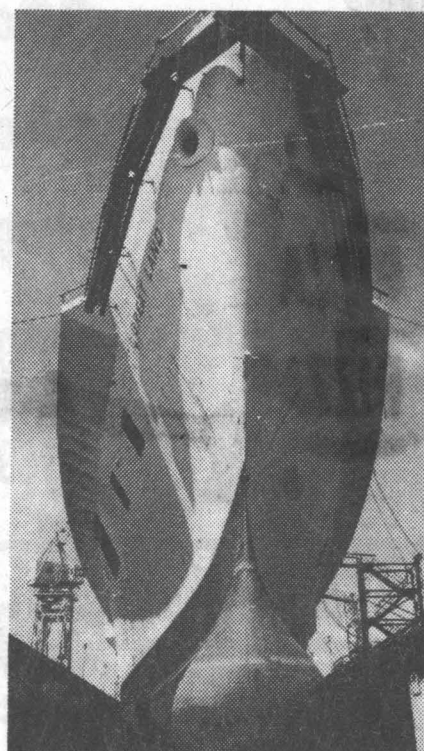
Final responsibility for approval of our plans to provide service to Anchorage lies with the Federal Maritime Commission. These plans, and the agreements for berthing of the "S.S. Great Land" have been filed with the Commission. We hope they will act positively on our request.

If all goes well, you should see the S.S. Great Land sailing into Cook Inlet during the second week in September.

The exact day isn't set yet — but we'll keep you posted.

## COMPETITIVE PRO- TESTS COULD DELAY OUR ARRIVAL

The City of Anchorage has already agreed to provide TOTE with the same type of berthing arrangement now enjoyed by Sea-Land. This agreement was essential for us to provide Alaska with our unique "roll-on, roll-off" trailership capability. However our competitors — Sea-Land and Coastal Barge Lines — have filed protests with the Federal Maritime Commission against our agreement with the City, and these protests could delay start of service.



## TOTE'S ENTRY MEANS MORE FOR ANCHORAGE — MORE REVENUE MORE JOBS

The City of Anchorage receives a guaranteed payment of a quarter of a million dollars a year once our preferential agreement is approved.

For each ton of TOTE cargo above the guaranteed amount that moves across the dock, even more revenue comes to the City. Some of this revenue will be from cargo that can't be moved by Sea-Land via Anchorage...and this means more jobs in Anchorage.

## AND WE'LL BE HERE ALL YEAR ROUND AND FOR YEARS TO COME

Our operation will continue to serve Anchorage through the winter months...helping to stabilize seasonal employment. We'll move outsized and special cargo across your dock...making more productive use of existing Anchorage facilities.

We've had our ups and downs. But we're getting there.

We want to thank the Mayor and the City Council for working with us to find a way to bring our service — and the jobs that go with it — and the increased revenues to the City of Anchorage.

**Tote**  
AN ALASKAN CORPORATION

ANCHORAGE OFFICE:  
201 E. 3rd Avenue  
Plaza 201 Building, Suite 206  
Anchorage, Alaska 99501  
(907) 278-4685

SEATTLE OFFICE:  
1201 Alaskan Way South  
Seattle, Washington 98134  
(206) 628-4343