

Anchorage Daily News, Friday, October 6, 1972

## Court no help in dock dispute here

A U.S. District Court hearing here has failed to resolve the status of city longshoremen in a dispute with industrial workers of the Seafarers International Union.

Judge Raymond Plummer recessed proceedings after two hours Wednesday, saying he was dissatisfied with its content and unsure he had been properly informed when he issued a restraining order last week.

Members of the Anchorage longshore group last June began disaffiliation proceedings with the international union, claiming the body had not served local interests. The group formed a new union, Anchorage Independent Local No. 1.

When the parent organization failed to recognize the new union, it placed the maverick group into trusteeship. An appointed trustee said Anchorage longshoremen denied him access to their records and would not cooperate.

The restraining order required cooperation from the Anchorage membership and release of records.

Plummer did not set a date for continuation of the hearing.

# SEA-LAND VESSEL WAITS

## Maverick Union Pickets Block Van Unloading

By FLIPTODD  
Times Staff Writer

The first Sea-Land ship to berth at the Port of Anchorage since Sept. 27 is sitting alongside the dock but is not being unloaded because of an intra-union squabble that could tie-up ships here for some time.

The SS Mobile, which arrived at the port yesterday evening at 9:30, was tied up, was to have begun unloading at 7 a.m. this morning. But when newly hired Seafarers International Union members arrived to unload the vessel, men who normally unload Sea-Land ships — the maverick Anchorage Independent Longshore Union Local No. 1 — picked the city dock.

Teamsters, who drive the vans away once they are unloaded, refused to cross the picket line. The lone van that had been unloaded lay on the dock untouched. The Seafarers International Union workers waited as did local merchants who had liquor, cars, produce and dry goods aboard.

A judge has issued an order stating that a temporary restraining order against the local maverick union which will remain in effect and must be complied with until a hearing is held.

U.S. District Court Judge Raymond E. Plummer ruled that the local picketers were to comply with an order to cooperate with their former parent union until a hearing is held on the parent union's injunction. Today no one knew when the hearing would be held.

The picketers appeared to

be intent upon maintaining their line and Marty Farrell, counsel for the Seafarers International Union, told the Times today that "I can assure you that a contempt proceeding will be brought, (against the picketers) as soon as we can do it."

The strike, at the entrance to the city dock, not only halted any unloading of the Sea Land vessel, but halted almost all activity by the city and Sea Land on the dock. Two construction and repair projects that were under way there were stopped as union members refused to cross the picket line. Clerical help in the Sea Land office on the dock also refused to cross the line.

Although the strike was caused by an intra-union squabble, the Anchorage Independent Longshore Union is picketing the Sea Land Co. because they called a representative of the SIU to unload the ship instead of the normal dispatcher, who now considers himself a member of the maverick group. "We're just caught in the middle of this thing," a Sea Land official pointed out.

By press time officials were attempting to make arrangements for perishable goods such as lettuce to be unloaded. Officials were working with the leaders of the SIU here, the Anchorage Independent Longshore Union and the Teamsters to get only those goods that might begin to spoil in the next few days, even though they are in refrigerated vans, off the ship and into grocery stores.



### LONELY VAN WAITS ON DOCK

The first and only Sea-Land van that was unloaded from the SS Mobile, which berthed at the city dock last night, awaits the end of a strike by local longshoremen before heading for its destination. The containers are unloaded from the ship by the

crane in the picture and are placed on flatbed tractor-trailers for delivery to local merchants. Teamsters refused to cross the longshoremen's picket line so the van will sit on the dock until the intraunion squabble is settled.

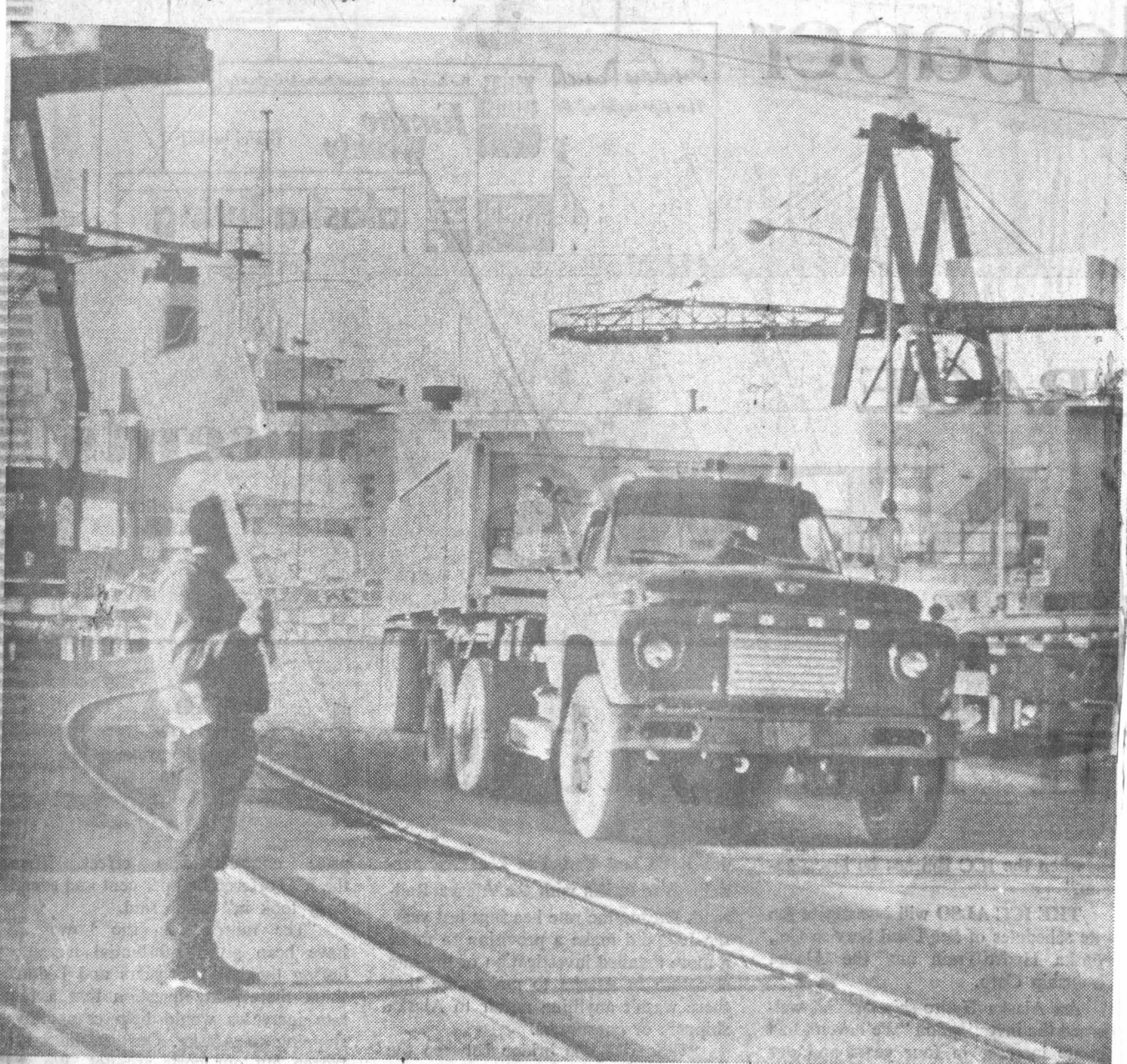


### LOCAL LONGSHOREMEN PICKET

Members of Anchorage's newly formed Anchorage Independent Longshore Union Local No. 1 picket on the city dock. The stack of the Sea-Land vessel SS Mobile can be seen in the background beyond the dock offices. The members were

picketing Sea-Land because they called the Seafarers International Union, the local longshoremen's former parent organization, instead of the local maverick group, to unload the ship.

A-2—Anchorage Daily News, Sunday, October 8, 1972



## Strikebreaking?

Sea-Land truck driven by a company management driver passes a picket at the Anchorage dock Saturday. Food perishables and other critical items were unloaded from the

SS Mobile, stranded here Friday when local longshoremen went on strike.

## Ship unloads past strikers

(Continued from Page 1)

appeared at the port Saturday morning and began unloading the SS Mobile, was a mystery. Sources said they had been rounded up by officials of the Industrial Workers of North America, a branch of the AFL-CIO affiliated with the Seafarers International Union from which the AILU is seeking autonomy, but workers refused to discuss their identities with newsmen.

An agreement was reached early Saturday for the non-AILU stevedores to unload perishables and for Sea-Land management persons to drive

the trucks past the picket line where they were taken by Teamsters. A similar agreement for military cargo fell through.

"WE WERE trying to be co-operative and we went along with the plan," said Frank Grant, business manager of the AILU, referring to the agreement on perishables. "I guess that was bad politics," he added.

Ernest Webb, operations manager for Sea-Land here, said he hoped the dispute would be settled by the National Labor Relations Board by Tuesday. If the strike went on much longer, he said, Sea-Land ships scheduled

to dock in Anchorage would be rerouted to Seward.

THE MOBILE has been delayed at the port since Thursday when workers refused to unload it. The dispute between local dock workers and the parent union has been simmering for some time and boiled over recently when the AILU was formed.

Seafarers International has official jurisdiction at the docks, and last week, U.S. District Court Judge Raymond Plummer ordered the AILU to cooperate with the terms of the trusteeship placed on them by the parent union until the matter is heard in court.

Anchorage Daily News, Tuesday, October 10, 1972

## Docks here open again

By The Associated Press

A partial settlement in a longshoremen's dispute in Anchorage was reached Monday and officials of Sea-Land Services, Inc. said the unloading of the SS Mobile was to begin Monday night.

Assistant State Labor Commissioner Robert Smith of Anchorage met with the opposing factions and said later he expected freight to begin moving off the ship as a result of the meeting.

At the center of the dispute are the Anchorage unit of the United Industrial Workers of North America, a branch of the AFL-CIO affiliated Seafarers International Union and the Anchorage Independent Longshoremen's Union (AILU).

The AILU split away from its parent union and is attempting to gain recognition as bargaining agent on Anchorage docks.

The national union, however, is fighting this move and the result has been a picket line by the AILU and a work stoppage on the docks.

Perishable cargo was unloaded from the ship over the weekend under an agreement reached by the unions Friday night. That agreement allowed Teamsters to drive trucks past picket lines and Sea-Land personnel to handle them inside the lines.

Two construction projects under way on the dock have continued to progress as the AILU has specified to the City Council that it has no dispute with any of the crafts working on the dock and members can cross the picket line.

A part of the agreement on which men were called back to work is based on alternating between the national union members and members of the new independent union.

Meanwhile, Sea-Land officials said they have another ship due in port Tuesday and have indicated they will bring it into Anchorage.

Anchorage Daily News, Monday, October 9, 1972

## Another Sea-Land ship due State enters dock dispute

State labor officials were expected to call a meeting today in Anchorage between all factions involved in Anchorage's waterfront labor dispute in an attempt to get it resolved quickly. Ernie Webb, Alaska operations manager for Sea-Land Service Inc. said Sunday night that the meeting was to be held in the office of the Assistant

Commissioner of Labor at Anchorage, but no time was set.

STEVEORES at the Port of Anchorage worked Saturday and Sunday unloading a Sea-Land vessel that has been the object of controversy in a battle between two unions and Webb said another Sea-Land ship was due into the port Tuesday.

"We intend to bring it on into

Anchorage, but until this meeting we won't know what the unloading status will be," Webb said.

At odds in this union battle are the Anchorage Longshore Unit of the United Industrial Workers of North America, a branch of the AFL-CIO affiliated Seafarers International Union, which has jurisdiction at the docks, and the Anchorage Independent Longshoremen's Union (AILU). The AILU has broken away from the parent union and is striking for bargaining power.

EARLIER this weekend Teamsters refused to cross the AILU picket lines.

A spokesman for the parent union said Sunday night that no word of the meeting had reached his organization, but that if the labor department called the meeting they would attend.

Sea-Land meanwhile has filed charges of unfair labor practices with the National Labor Relations Board against the striking independent union and contempt charges may be filed in the federal court at Anchorage this week, one union spokesman said.

The parent union has also brought suit in federal court against the AILU, to keep the independent union from getting any of the jurisdiction rights it is now seeking.

Counsel for the parent union contends that the temporary restraining order means the independent members should answer work calls from the parent union's trustee until the matter is settled in court.