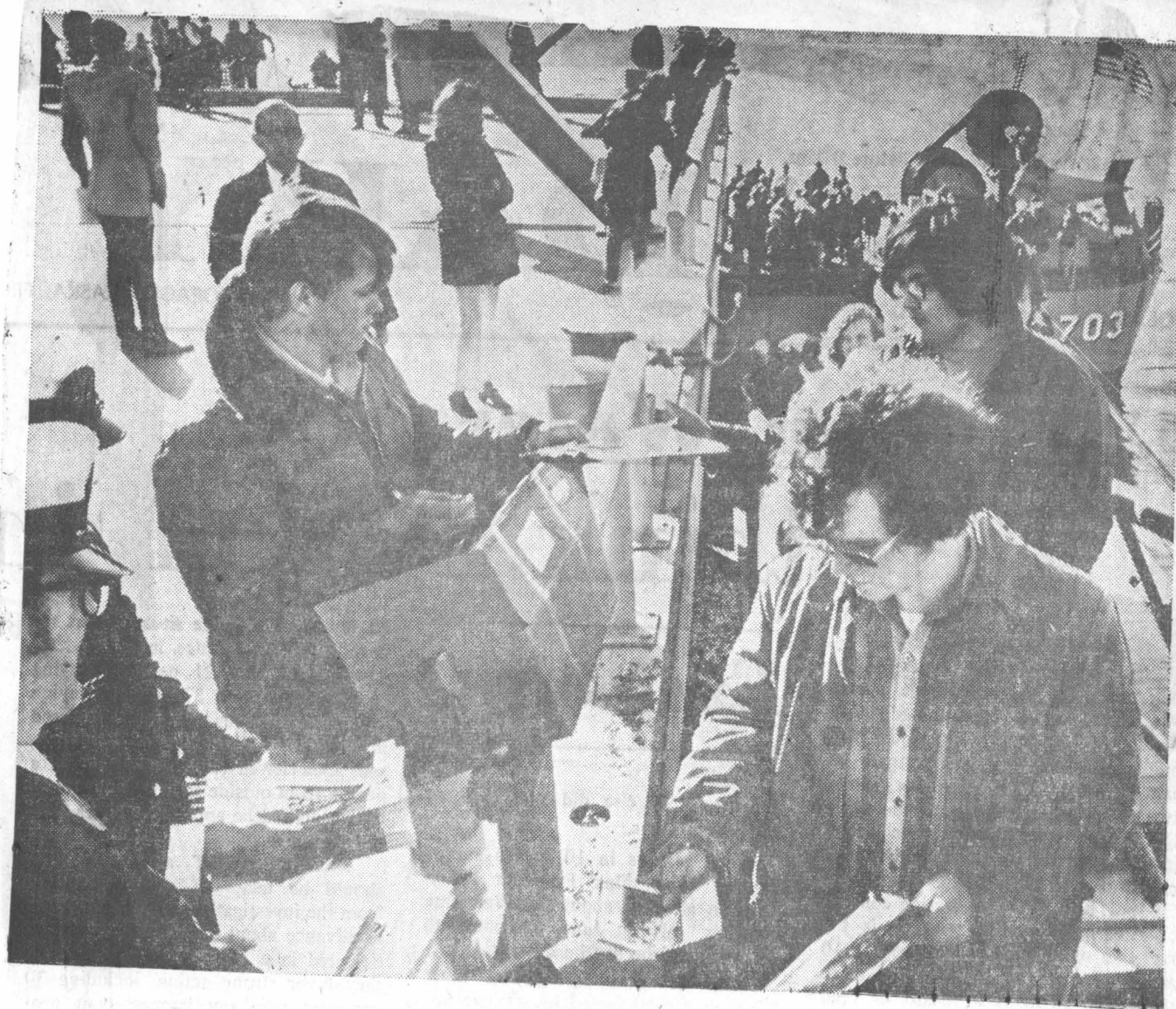


## Wallace L. Lind pays a visit

The USS Wallace L. Lind was scheduled to dock in Anchorage Wednesday night to offer Anchorage residents a chance to "Go Navy." The purpose of the week long visit is to support the first annual high school cruise recruiting program. At 9 a.m. today high school seniors from the Anchorage area will ride the Wallace L. Lind for an eight-hour cruise on the Cook Inlet. From 9 a.m. to noon and 6 to 9 p.m. on Friday, Saturday

and Sunday, the ship will host an open house for all Anchorage area residents. But transportation will be available from the city parking lot at Third Avenue and C Street to and from the dock for 50 cents for adults and 25 cents for children. The ship will depart from Anchorage Monday morning. Commanding officer for the Wallace L. Lind is Commander David N. Orrik.



Henry Peck

## A destroyer ride down Cook Inlet

Anchorage area high school students steamed down Cook Inlet on the USS Wallace L. Lind Thursday, while the destroyer docked here for a long weekend. The Lind voyage was the first annual high school recruiting cruise, and the vessel will remain at the Port of Anchorage over

the weekend. It will be open for inspection from 9 a.m. until noon and from 6 to 9 p.m. today, Saturday and Sunday. Bus transportation will be available for the city parking lot at Third Avenue and C Street.

# Destroyer Visits Alaskan Ports



## YOUTHS ENJOY VIEW AT SEA

Kenai High School juniors Steve Arbelousky and Ron Spillers enjoy the view from one of the upper decks of the destroyer, USS Wal-

lace L. Lind. They were among the Kenai and Palmer pupils who were guests of the Navy on a cruise to Nikiski yesterday.



## STUDENTS TOUR DESTROYER

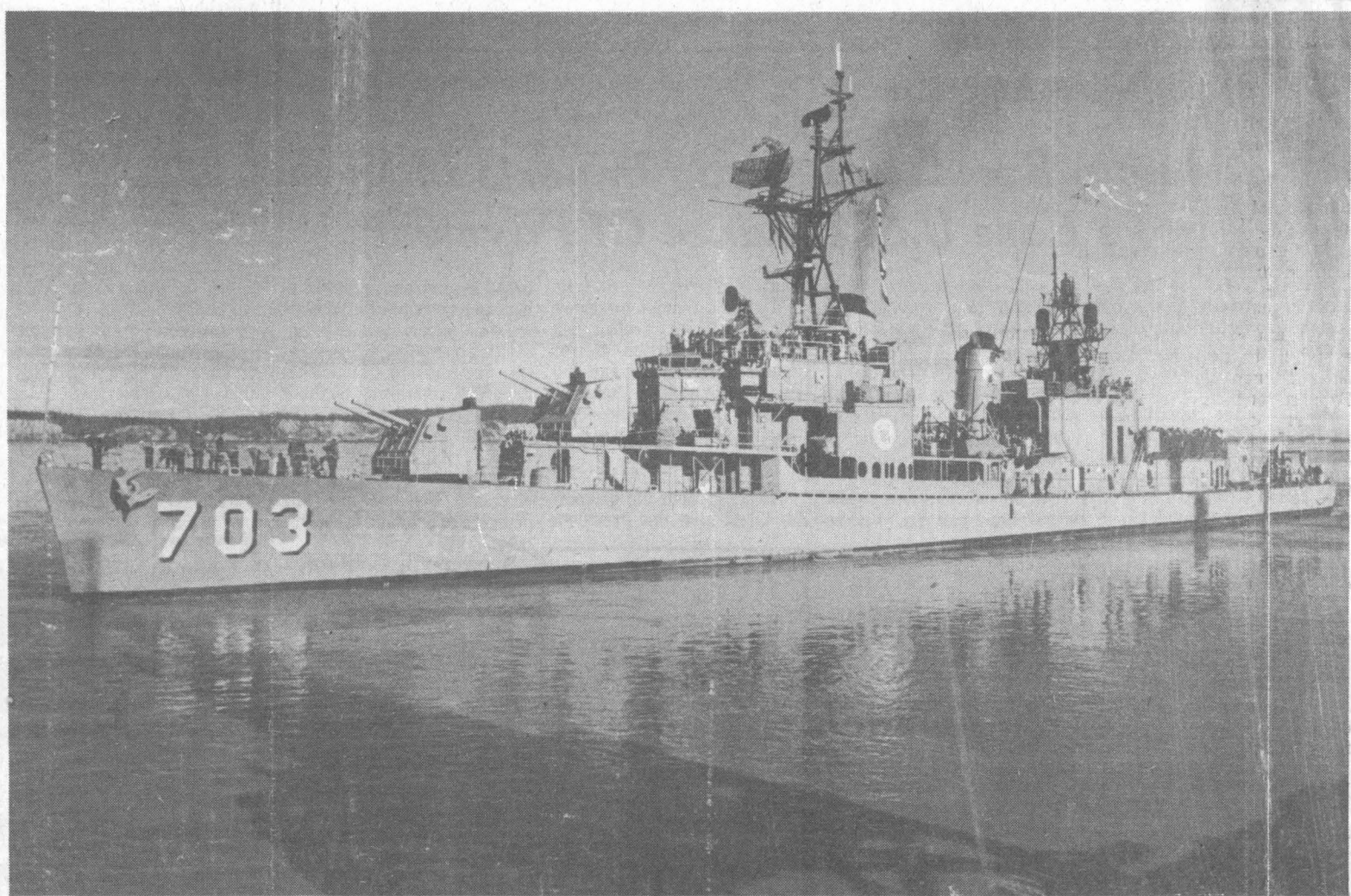
Lt. John Campbell, a recruiting officer, guides Homer and Kenai students through the vessel during its cruise yesterday.



## DESTROYER'S COMMANDER GREETES VISITOR

Cmdr. David N. Cook, left, welcomes Capt. Fred Hiltz, senior Naval officer present, to the USS

Wallace L. Lind, upon the vessel's arrival in Anchorage at suppertime yesterday.



## VESSEL BEGINS CRUISE FROM PORT OF ANCHORAGE

The USS Wallace L. Lind destroyer prepares to depart the Port of Anchorage on a cruise for students interested in Naval careers. Approximately 150 Anchorage youths were on board for the cruise, which began this morning and was to be concluded later in the day. During the vessel's stay in Anchor-

age, the 274-man crew will be hosted at cocktail parties, receptions and sightseeing tours, and visits to Anchorage homes. A reception for the destroyer in Anchorage last night was hosted by the Alaska Sea Services Committee, the Fleet Reserve Association and the Anchorage Navy League Council.