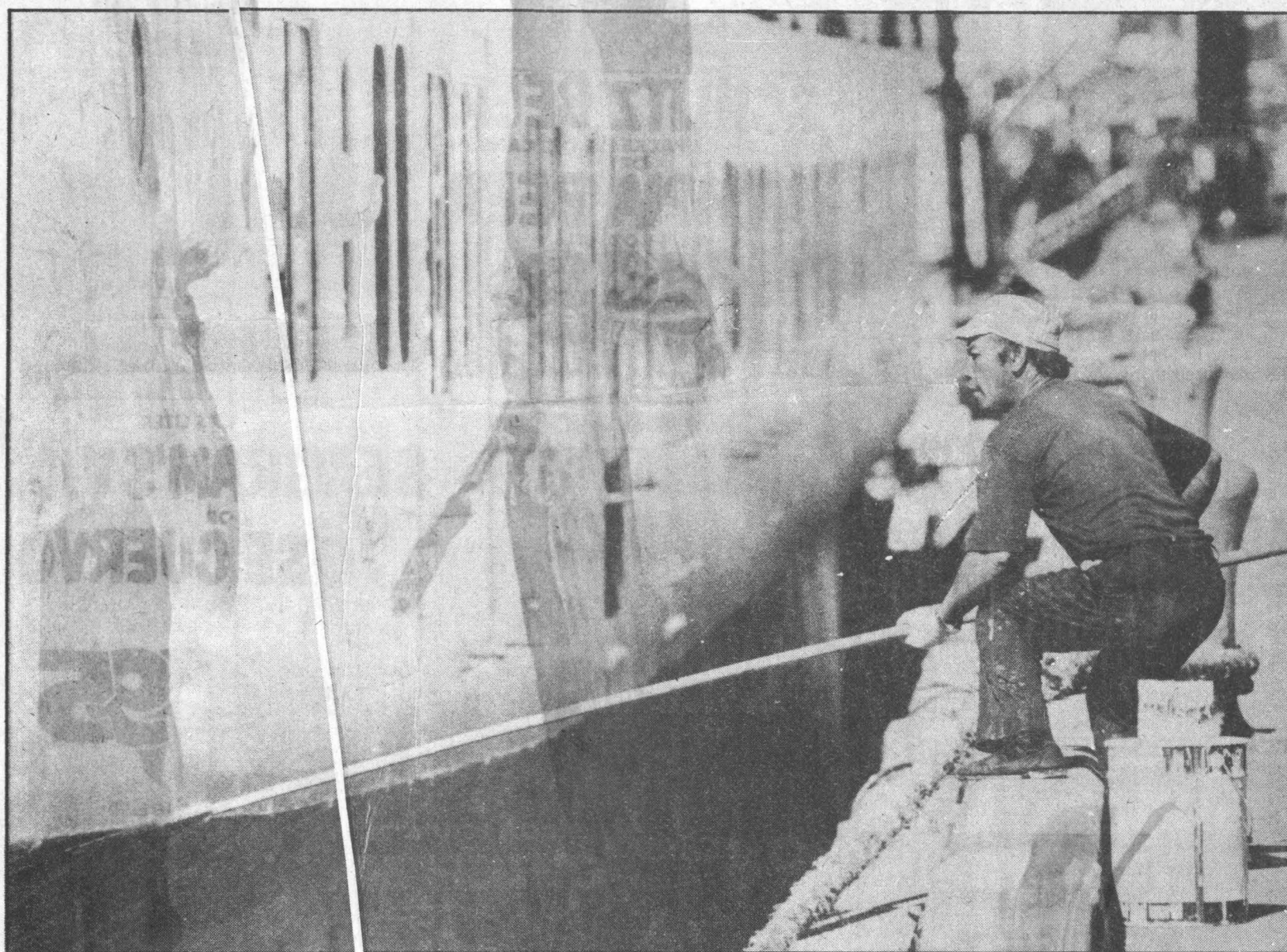


Anchorage: Port Serves Much Of State As Regional Distribution Center



REMINDER OF DAYS PAST

In another part of the Anchorage port area lies the retired fishing vessel, Ophelia. Like a ghost ship at dusk, it is a reminder of past fishing days.



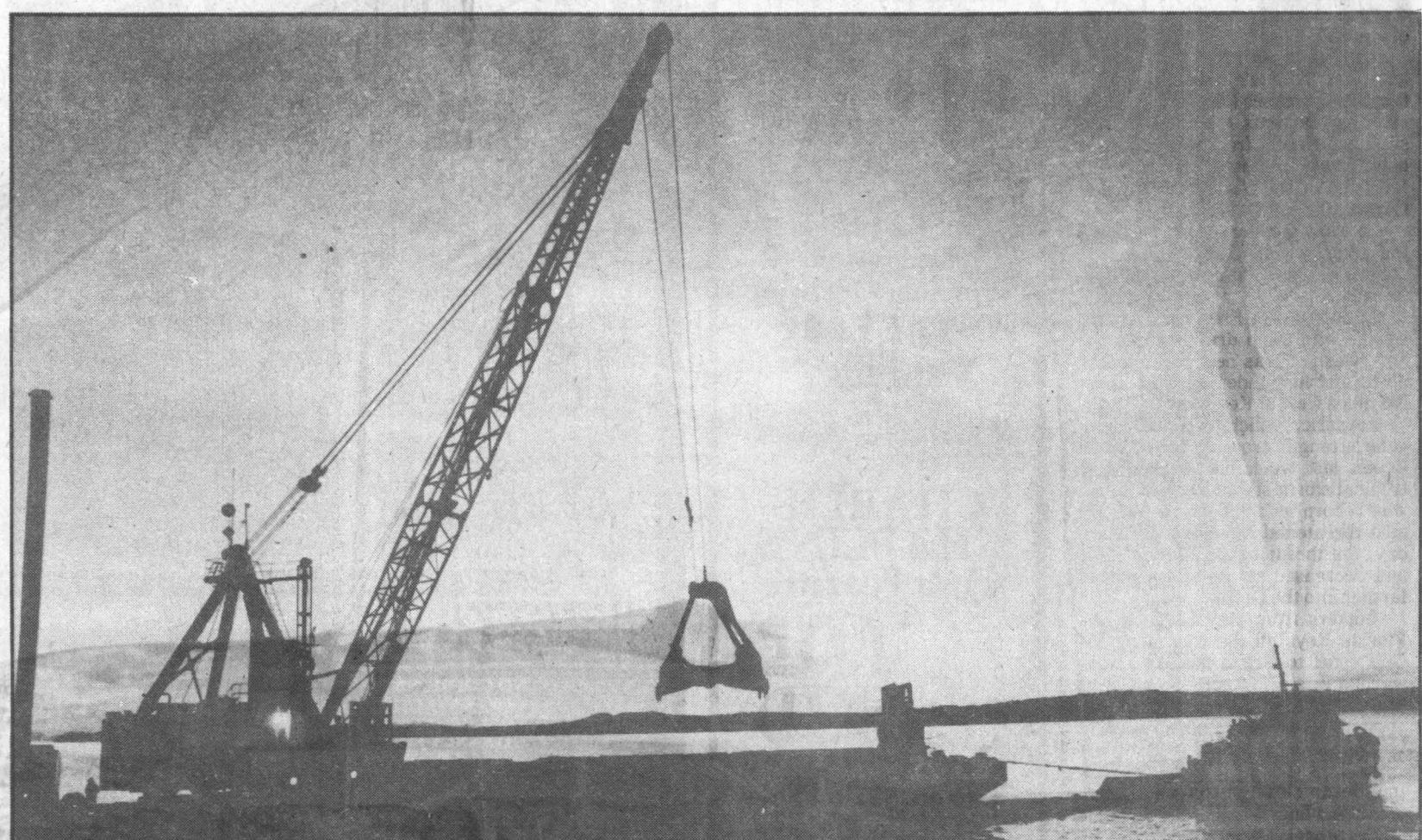
SHIPS REQUIRE CONSTANT CARE

Taiwanese sailor does some touchup painting on the cruise ship, Universe, when it stopped over in Anchorage in August. Vessels require constant care.



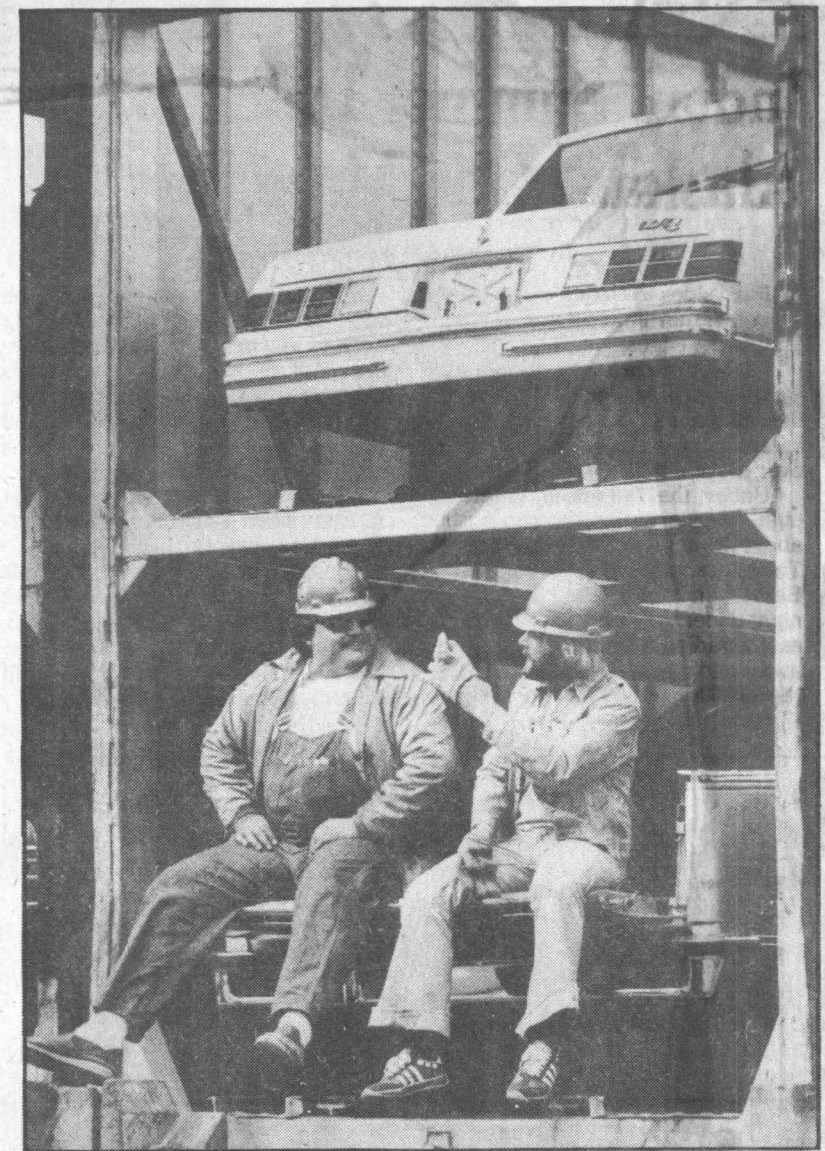
CRANE IS BACKBONE OF PORT

Massive cranes, the backbone of all ports, load and unload ships. Nelson Skinner operates a crane to unload the Sea-Land freight vessel, Newark. Crane operators work until ship is emptied, many times through the night. Here Skinner works high in the sky as the sun sets.



DREDGE KEEPS CHANNEL FREE

Dredging to keep channel free for deep-water vessels is an almost continual chore at port. A tugboat holds a dredging crane in place against the heavy current in Knik Arm.



LONGSHOREMEN TAKE A BREAK

Port of Anchorage not only employs many Anchorage workers, but helps boost the economy of the entire area. Anchorage has long been the main distribution center for Alaska with goods shipped here from Seattle and then distributed to other Alaska points. Two longshoremen relax between off-loading trailers for Sealand.



HIS HOME IS THE SEA

Capt. Ray Karlsvik surveys his domain from outside the wheelhouse of his Sealand ship, the Newark. Vessels from all over the world dock at Port of Anchorage. Totem Ocean Express and Sea-Land Service Co. are two lines that often use the facility.

Times Photos
By Jim Lavrakas