

7-7-85  
Times



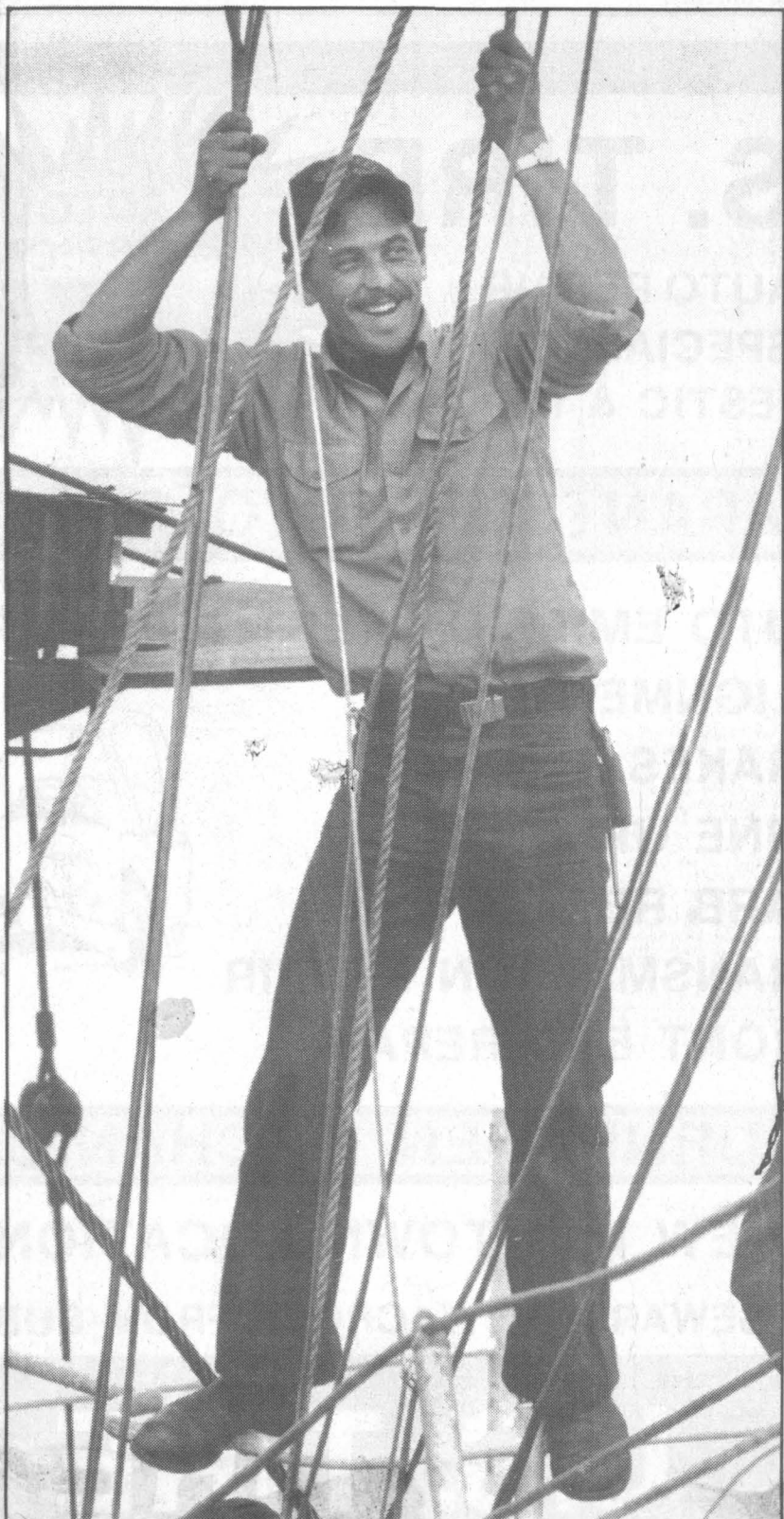
A pair of sailors work to tie up the USS Excel



Glenn Reisel polishes the brass fittings on the Excel



A team effort is necessary to secure the USS Excel after it sailed into the Port of Anchorage this weekend with other ships from the 3rd Fleet



David Garrigus awaits his chance to get off the Excel

## Anchor-age aweigh

The U.S. Navy has brought more people down to the Port of Anchorage docks, just to sightsee, than have been there in many a day.

Since the Navy's arrival Wednesday morning, a constant stream of visitors have walked past and through the seven Navy ships, just to see the largest fleet of vessels ever assembled in Anchorage since World War II.

The lines of people waiting Saturday to see the USS Truxtun, a nuclear-powered cruiser armed with guided missiles, reached from stern to stern and beyond.

The interest in the two frigates, the USS Harold E. Holt and the USS Brewton, was just as high.

While the four minesweepers are the smallest of the ships, the USS Excel, the USS Enhance, the USS Gallant and the USS Implicit drew their own crowds of interested visitors.

The Truxtun wasn't keeping count of how many people came to tour her, but Lt. Cmdr Mike Dial, the ship's engineering officer, said about 4,000 came on July 4 and a good 6,000 came on Saturday.



Liberty Hound, mascot for the USS Implicit

Times photos by  
Douglas Van Reeth,  
Wendi K. Brown  
& Mike Dinneen