



2000 Anchorage Port Road  
Anchorage, Alaska 99501  
907-343-6200  
[PortOfAlaska@AnchorageAK.gov](mailto:PortOfAlaska@AnchorageAK.gov)  
[PortOfAlaska.com](http://PortOfAlaska.com)

## **Port of Anchorage Commission Meeting Agenda**

Date: **May 13, 2020**

Time: **12pm – 1:30pm**

Virtual Meeting (call: 907-519-0237, pin: 679 792 617# or use Microsoft Teams link)

### **I. Call to Order**

- A. Roll Call
- B. Self Introduction by those present

### **II. Port Safety Minute (Paul Rotkis)**

### **III. Approval of Agenda**

### **IV. Approval of March 11, 2020 Meeting Minutes**

### **V. Port Director's Comments**

- A. New PoA staff, responsibilities, titles and positions
- B. COVID-19 operational impacts
- C. Port land acquisition / right of entry
- D. PCT financing/Port of Alaska Terminal Tariff No. 9 update
- E. PAMP planning update

### **VI. Informational Items**

- A. Port Modernization Program Director – Sharen Walsh
- B. Finance Director – Cheryl Beckham
- C. Superintendent of Operations and Maintenance – Shannon Martindale
- D. Director of Business Continuity and External Affairs, FSO – Jim Jager

### **VII. Old Business**

### **VIII. New Business**

### **IX. Public Comments**

### **X. Port Director's Closing Comments**

### **XI. Commissioner Comments**

### **XII. Meeting Schedule**

### **XIII. Adjourn**

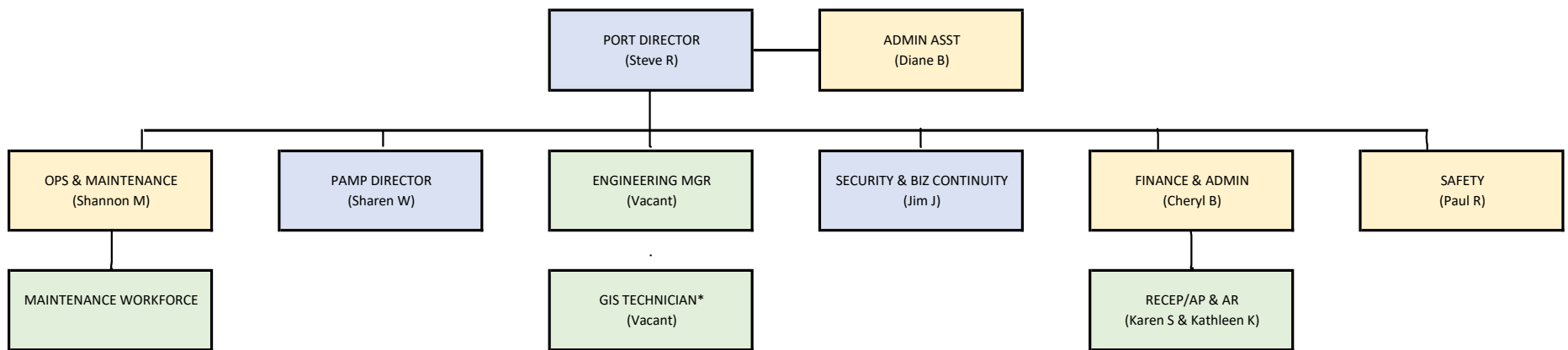
**Port of Alaska**  
**Budget to YTD Actual Comparison - Unaudited**  
**@3/31/2020**






	<b>2020 Budget</b> (Incl. 1Q Budget Rev.)	<b>2020 YTD Actuals</b>	<b>Target % 25%</b>
<b>Revenues</b>			
Cruise Ship Head Tax (2020 Season)	-	-	0%
Reimbursed Cost	-	5,440.08	0%
Dockage	1,610,413.00	228,548.34	14%
Wharfage, Bulk Dry	172,029.00	-	0%
Wharfage, Bulk Liquid	2,185,067.00	437,132.00	20%
Wharfage, General Cargo	3,462,981.00	943,846.07	27%
Miscellaneous	300,721.00	37,524.86	12%
Office Rental	40,000.00	9,450.00	24%
Utilities, Water	44,704.00	532.19	1%
Crane Rental	56,500.00	31,635.75	56%
Pipe ROW Fee	173,000.00	46,492.16	27%
POL Value Yard Fee	224,000.00	30,525.88	14%
Security Fees	1,477,975.00	369,892.85	25%
Industrial Park Lease	4,273,135.00	1,129,541.46	26%
Ind Park Rental/Storage	697,781.00	106,691.28	15%
Cash & Const Investm Pool Int	537,000.00	Nothing Recorded to Date	0%
<b>Total Operating/Non-Operating Revenue:</b>	<b>15,255,306.00</b>	<b>3,377,252.92</b>	<b>22%</b>
<b>Expenses</b>			
Personnel Services	2,952,855.00	604,350.92	20%
Non-Labor	4,632,690.00	658,761.31	14%
<b>Total Operating Expenses:</b>	<b>7,585,545.00</b>	<b>1,263,112.23</b>	<b>17%</b>
Legal Services - General (PIEP Litigation)	3,045,000.00	210,214.68	7%
MESA & Dividend payments	2,061,849.00	-	0%
Debt Service	1,325,000.00	251,227.50	19%
Depreciation and Amortization	7,187,791.00	1,796,947.75	25%
<b>Total Non-Operating Expenses:</b>	<b>13,619,640.00</b>	<b>2,258,389.93</b>	<b>17%</b>
Charges from Depts (IGC)	1,028,846.00	257,211.50	25%
<b>3/31/2020</b>	<b>22,234,031.00</b>	<b>3,778,713.66</b>	<b>17%</b>
Net Income:		(401,460.74)	
Depreciation - Non Cash Item Add back:		1,796,947.75	
Available Cash Flow @ 3/31/2020		<u>1,395,487.01</u>	

**Commodity Classification**

	<b>2020 - YTD</b>	<b>2019</b>	<b>2018</b>	<b>2017</b>
Freight NOS	8,890	1,167	2,199	5,876
Dry Bulk Goods	-	109,956	105,326	97,223
Petroleum, NOS (vessel fueling)	362	222,536	129,828	1,467
Vans/Flats/Containers	383,329	1,655,612	1,631,303	1,592,473
Petroleum, Shoreside	178,087	802,093	505,980	471,717
Petroleum, Bulk - Dockside	331,443	1,474,399	1,574,029	1,329,089
<b>Total Tonnage @ 3/31/2020:</b>	<b>902,111</b>	<b>4,274,514</b>	<b>3,948,665</b>	<b>3,497,845</b>



\* Assigned to GDIC, 75% funded by POA, Port oversight by Engineering Services Manager.

-  = Appointed Positions
-  = Non-Rep Positions
-  = CBA-governed Positions